

LINCOLN COUNTY U.S. PUBLIC LAND SURVEY MONUMENT LOCATION RECORD

SECTION 6
TOWNSHIP 34 N
RANGE 4 E

E-3
NO.

LANDMARK BENCHMARK
CORNER IDENTITY: BERNTSEN SNM1 STEEL NAIL MARKER

FOUND
SET
RESET
RE-TIED

LINCOLN COUNTY COORDINATE: N: 221955.422
E: 304387.403

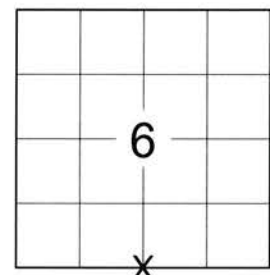
ELEVATION-(FEET): _____ DATUM: 83 (2011)

WEATHER: P. CLOUDY

DATE OF SURVEY: 07/25/2019 TEMPERATURE: 83 °F

SURVEY PARTY: KEITH WALKOWSKI AND AUSTIN PELOT

TOMAHAWK
CITY, VILLAGE, TOWN



SECTION
LOCATION
(Indicated By X)



BASIS FOR MONUMENT LOCATION:
(DESCRIBE METHOD OF SURVEY AND CORNER AUTHENTICATION)

SEARCHED FOR THE SOUTH 1/4 CORNER OF SECTION 6 AND FOUND A SMP NAIL ALONG WITH 3 OUT OF 4 TIES FROM THE 2012 TIESHEET BY GREGORY S. MAINES. ADDED AN ADDITIONAL BERNTSEN SSSDR-130 AND SET A BERNTSTEN SNM1 NAIL AT THE CORNER UPON COMPLETION OF STH 86 PAVING PROJECT TO PERPETUATE THE CORNER LOCATION AS SHOWN BELOW.



FIELD BOOK NO. NA PAGE NO. NA
COMPANY RIVERSIDE LAND SURVEYING LLC

CERTIFIED CORRECT:
Keith J. Walkowski
KEITH J. WALKOWSKI S-2717
Professional Land Surveyor
DATE: OCTOBER 15TH, 2019

TIE SKETCH:

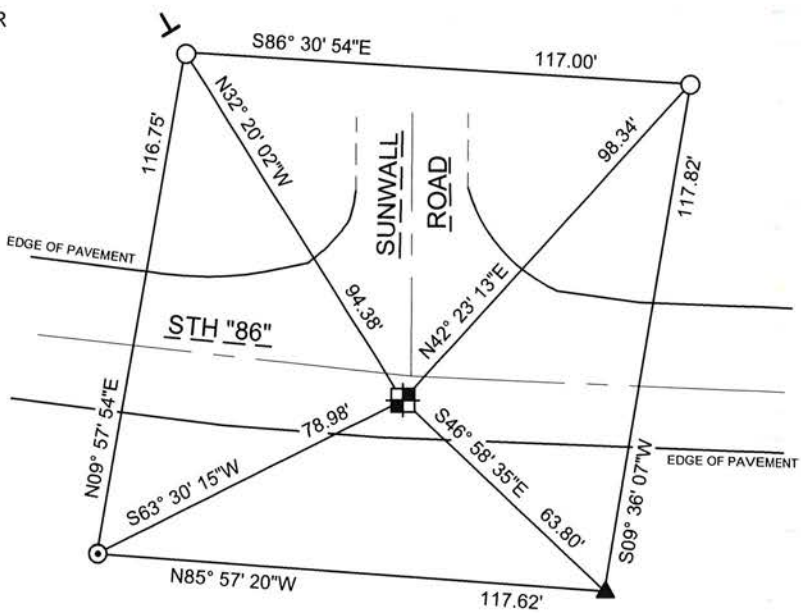
- SET BERNTSEN SNM1 STEEL NAIL MARKER
- FOUND ALUMINUM CAPPED REBAR
- FOUND 7/8" REBAR
- SET BERNTSEN SSSDR-130
- SET VINYL "T" POST

RECEIVED BY LINCOLN COUNTY
SURVEYOR THIS 12TH DAY
OF November 20 19
Tony Doherty
COUNTY SURVEYOR

NOTE: CORNER LIES 5.7' SOUTH OF CENTERLINE OF STH 86 AND 1.8' WEST OF CENTERLINE OF SUNWALL ROAD

BEARINGS ARE BASED ON THE LINCOLN COUNTY COORDINATE SYSTEM NAD 83 (2011) AND REFERENCED AS SHOWN

THIS DRAWING IS NOT TO SCALE



E-3
NO.

U.S. PUBLIC LAND SURVEY MONUMENT RECORD

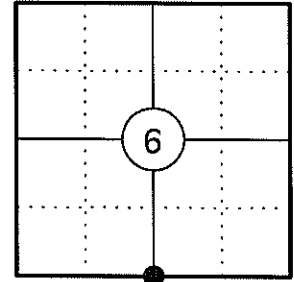
NOTE: THIS FORM IS INTENDED AND DESIGNED TO FULFILL ALL REQUIREMENTS OF WISCONSIN ADMINISTRATIVE CODE CHAPTER A-E 7.08 U.S. PUBLIC LAND SURVEY MONUMENT RECORD (3) (a)(b)(c)(d)(e)(f)(g)(h)(i). AN ADDITIONAL SHEET MAY BE ADDED IF NECESSARY TO CONFIRM WITH SAID REQUIREMENTS.

(a) CORNER LOCATION:

SOUTH 1/4 CORNER OF SECTION 6
 TOWNSHIP 34 NORTH
 RANGE 4 EAST
 TOWN OF TOMAHAWK
 COUNTY OF LINCOLN

LINCOLN COUNTY COORDINATES:

N: 221955.45
 E: 304387.39



(b) HISTORY OF ORIGINAL CORNER:

ORIGINAL SURVEYOR: EDWARD D. PALMER
 DATE OF SURVEY: APRIL 1865

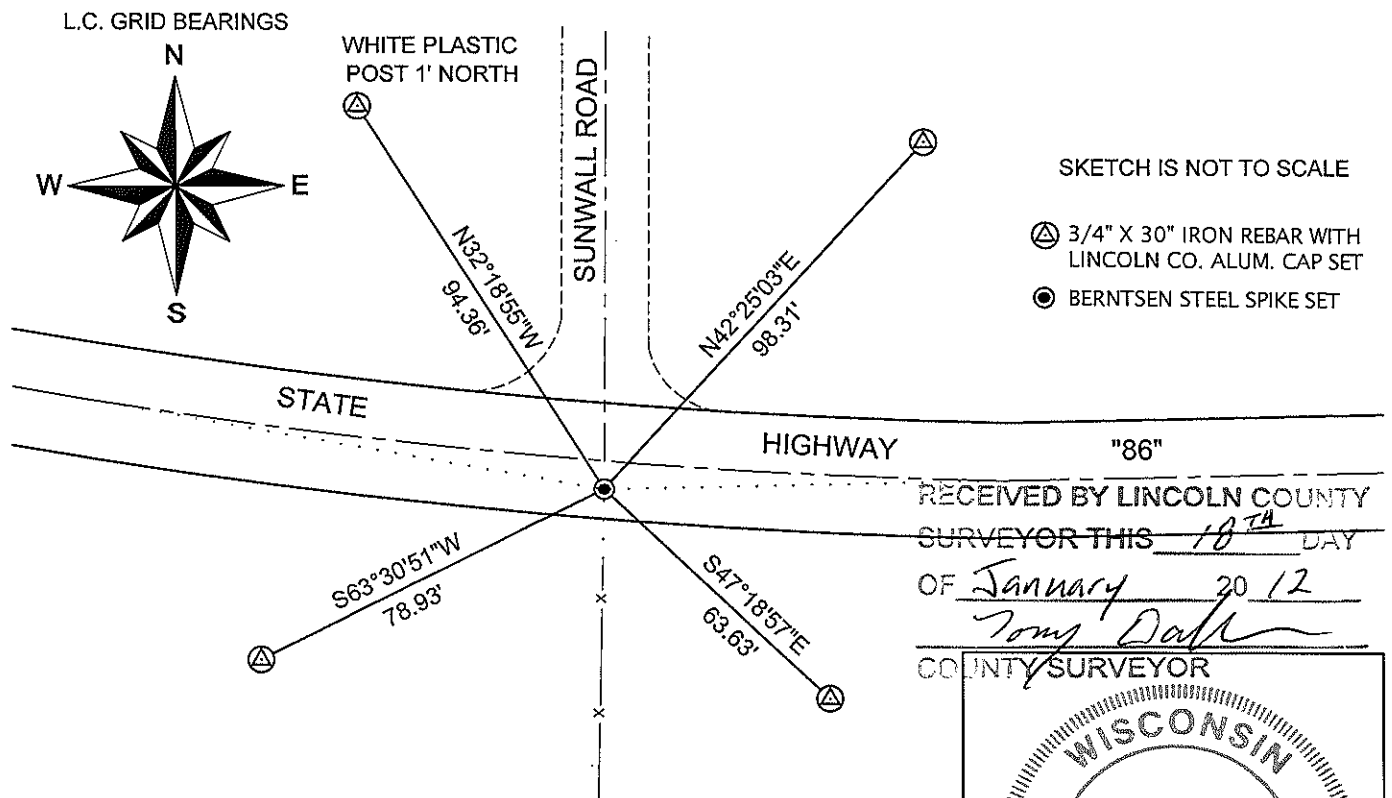
ORIGINAL BEARING TREES: 9" HEMLOCK - N10°E, 36 LKS
 12" HEMLOCK - S13°E, 20 LKS

(f)(g)(h) DESCRIPTION OF MONUMENT FOUND AT THIS CORNER AND IF IT WAS ACCEPTED STATE ALL EVIDENCE (MATERIAL, TESTIMONIAL, OCCUPATIONAL, PLATS, RECORDS, OTHER MONUMENTS) USED AS A BASIS FOR ESTABLISHING LOCATION. IF REESTABLISHING THROUGH LOST CORNER PROPORTIONATE METHODS, INDICATE ALL MONUMENTS, DISTANCES, AND DIRECTIONS USED TO ESTABLISH. INDICATE TYPE OF MONUMENT AND SIGN POST FOUND OR SET.

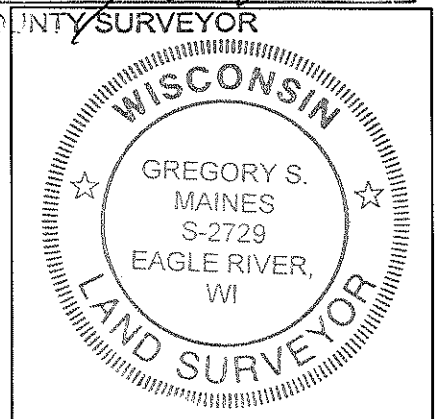
1865: EDWARD D. PALMER SET THE ORIGINAL 1/4 CORNER POST.

01/05/2012 I FOUND A FENCE LINE RUNNING SOUTH, THE CENTER LINE OF SUNWALL ROAD RUNNING NORTH AND THE CENTERLINE OF STATE HIGHWAY 86 RUNNING EAST AND WEST. I CONTACTED THE WI DOT AND SEARCHED THE LINCOLN COUNTY SURVEYORS OFFICE FOR INFORMATION REGARDING THE LOCATION OF THIS CORNER. ALL I FOUND WAS OLD PLAT BOOKS AND AN OLD RIGHT-OF-WAY PLAT THAT SHOW THIS CORNER GRAPHICALLY AT THE INTERSECTION OF SUNWALL ROAD AND HWY 86. THERE IS A CURVE ON HWY 86 AT THIS LOCATION SO I EXTENDED THE TANGENTS FROM THE EAST AND FROM THE WEST TO INTERSECT THE NORTHERLY EXTENSION OF THE FENCE LINE AND THE SOUTHERLY EXTENSION OF THE CENTERLINE OF SUNWALL ROAD AND HELD THIS POSITION AS THE CORNER. THIS POSITION IS 5.5' SOUTH OF THE CENTERLINE OF HWY 86. I SET A BERNTSEN STEEL SPIKE TO MONUMENT THE CORNER AND SET FOUR 3/4" DIA. IRON REBAR WITH ALUMINUM CAPS TO WITNESS THE CORNER.

(c)(d)(e) PLAN VIEW OF CORNER WITH TIES TO AT LEAST FOUR WITNESSES. IF IN DISAGREEMENT WITH PREVIOUSLY ESTABLISHED CORNER, SHOW THE DISTANCES BETWEEN THE TWO CORNERS AND ALSO INDICATE THE TIE TO THE DISPUTED CORNER.



RECEIVED BY LINCOLN COUNTY SURVEYOR THIS 18TH DAY OF January 20 12
Tom Dalk
 COUNTY SURVEYOR



INDEX NO. E-3

CERTIFICATION

I GREGORY S. MAINES, REGISTERED LAND SURVEYOR NO. 2729, HEREBY CERTIFY THAT THE CORNER LOCATION ON THIS RECORD WAS REFERENCED BY ME OR UNDER MY DIRECTION AND CONTROL AND THAT THIS U.S. PUBLIC LAND SURVEY MONUMENT RECORD IS COMPLETE TO THE BEST OF MY KNOWLEDGE AND BELIEF.

Gregory S. Maines 1/05/12
 SIGNATURE

SOUTH 1/4 CORNER – SECTION 6, T 34 N, R 4 E

OVERVIEW



MONUMENT



FACING NORTH



SOUTH 1/4 CORNER – SECTION 6, T 34 N, R 4 E

FACING EAST



FACING SOUTH



FACING WEST

