



# U.S. PUBLIC LAND SURVEY MONUMENT RECORD

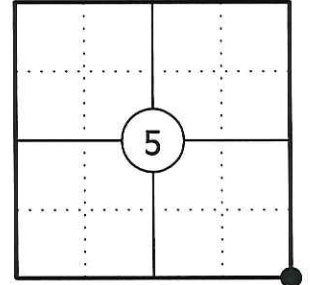
NOTE: THIS FORM IS INTENDED AND DESIGNED TO FULFILL ALL REQUIREMENTS OF WISCONSIN ADMINISTRATIVE CODE CHAPTER A-E 7.08 U.S. PUBLIC LAND SURVEY MONUMENT RECORD (3) (a)(b)(c)(d)(e)(f)(g)(h)(i). AN ADDITIONAL SHEET MAY BE ADDED IF NECESSARY TO CONFIRM WITH SAID REQUIREMENTS.

**(a) CORNER LOCATION:**

SOUTHEAST CORNER OF SECTION 5  
 TOWNSHIP 34 NORTH  
 RANGE 4 EAST  
 TOWN OF TOMAHAWK  
 COUNTY OF LINCOLN

**LINCOLN COUNTY COORDINATES:**

N: 221979.48  
 E: 312388.65



**(b) HISTORY OF ORIGINAL CORNER:**

ORIGINAL SURVEYOR: EDWARD D. PALMER  
 DATE OF SURVEY: APRIL 1865

ORIGINAL BEARING TREES: 5" CEDAR - N20°W, 10 LKS  
 3" CEDAR - N30°E, 12 LKS  
 5" CEDAR - S60°E, 1 LKS  
 5" CEDAR - S27°W, 11 LKS

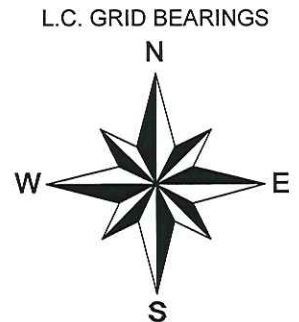
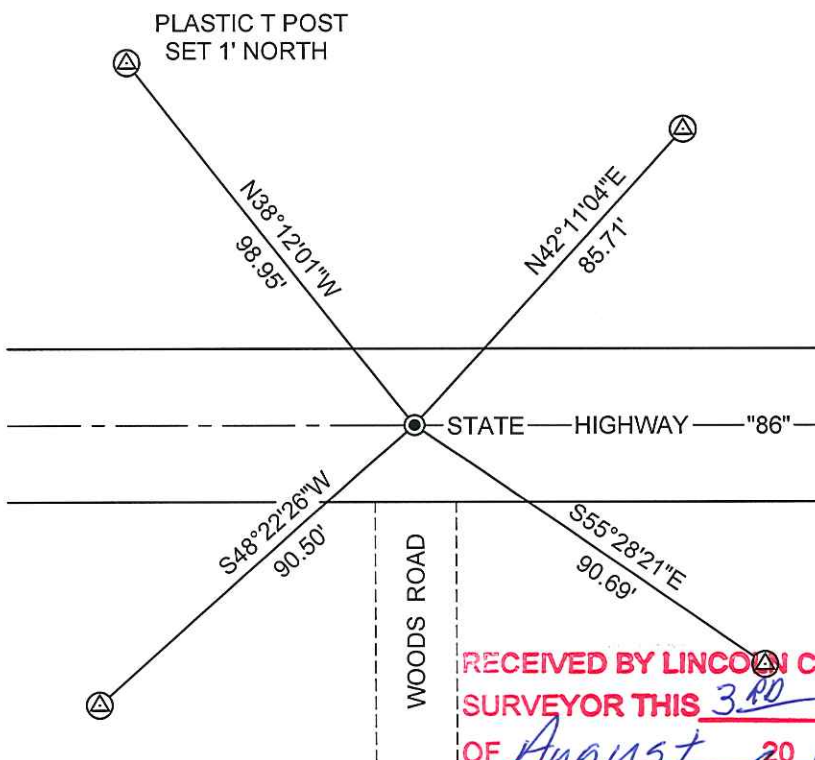
**(f)(g)(h) DESCRIPTION OF MONUMENT FOUND AT THIS CORNER AND IF IT WAS ACCEPTED STATE ALL EVIDENCE (MATERIAL, TESTIMONIAL, OCCUPATIONAL, PLATS, RECORDS, OTHER MONUMENTS) USED AS A BASIS FOR ESTABLISHING LOCATION. IF REESTABLISHING THROUGH LOST CORNER PROPORTIONATE METHODS, INDICATE ALL MONUMENTS, DISTANCES, AND DIRECTIONS USED TO ESTABLISH. INDICATE TYPE OF MONUMENT AND SIGN POST FOUND OR SET.**

1865: EDWARD D. PALMER SET THE ORIGINAL SECTION CORNER POST.

03/06/1987: WILLIAM STUTH PREPARED A MAP OF A 1971 SURVEY PERFORMED BY OWENS-ILLINOIS AND SHOWS THE CORNER POSITION AT THE INTERSECTION OF HIGHWAY 86 AND A ROAD RUNNING SOUTH.

05/29/2012: I FOUND NO EVIDENCE OF THE ORIGINAL CORNER. THE O.I. MAP AND PLAT BOOKS FROM THE EARLY 1900'S SHOW THIS CORNER AT THE INTERSECTION OF TWO ROADS. THE PROPERTY OWNER TO THE WEST HAS LIVED ON THE PROPERTY ALL HIS LIFE AND ALWAYS UNDERSTOOD THE CORNER TO BE IN THE INTERSECTION. I WENT SOUTH TO THE 1/16 CORNER AND FOUND A SCRIBED WOOD POST ON THE WEST SIDE OF THE ROAD AND A BENT OVER 1 1/4" DIA. IRON PIPE LAYING FLAT ON THE EAST SIDE OF THE ROAD. I POSITIONED THE SECTION CORNER AT THE CENTERLINE INTERSECTION OF HIGHWAY 86 AND THE WOODS ROAD RUNNING SOUTH. I SET A BERNTSEN STEEL SPIKE TO MONUMENT THE CORNER AND SET FOUR REFERENCE MONUMENTS TO WITNESS THE CORNER.

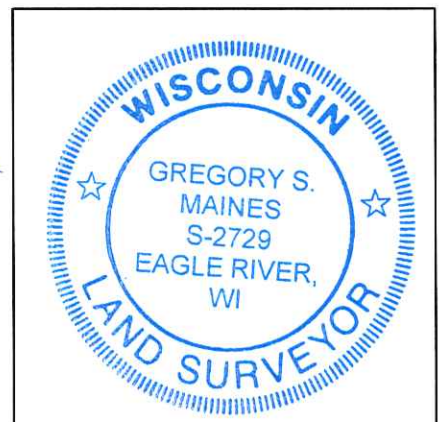
**(c)(d)(e) PLAN VIEW OF CORNER WITH TIES TO AT LEAST FOUR WITNESSES. IF IN DISAGREEMENT WITH PREVIOUSLY ESTABLISHED CORNER, SHOW THE DISTANCES BETWEEN THE TWO CORNERS AND ALSO INDICATE THE TIE TO THE DISPUTED CORNER.**



- ⊙ 3/4" X 30" IRON REBAR WITH LINCOLN CO. ALUM. CAP SET
- BERNTSEN STEEL SPIKE SET

SKETCH IS NOT TO SCALE  
 DISTANCES TO BT'S ARE TO NAIL IN SIDE

**RECEIVED BY LINCOLN COUNTY  
 SURVEYOR THIS 3<sup>RD</sup> DAY  
 OF August 20 12  
*Tom Dalk*  
 COUNTY SURVEYOR**



INDEX NO. E-9

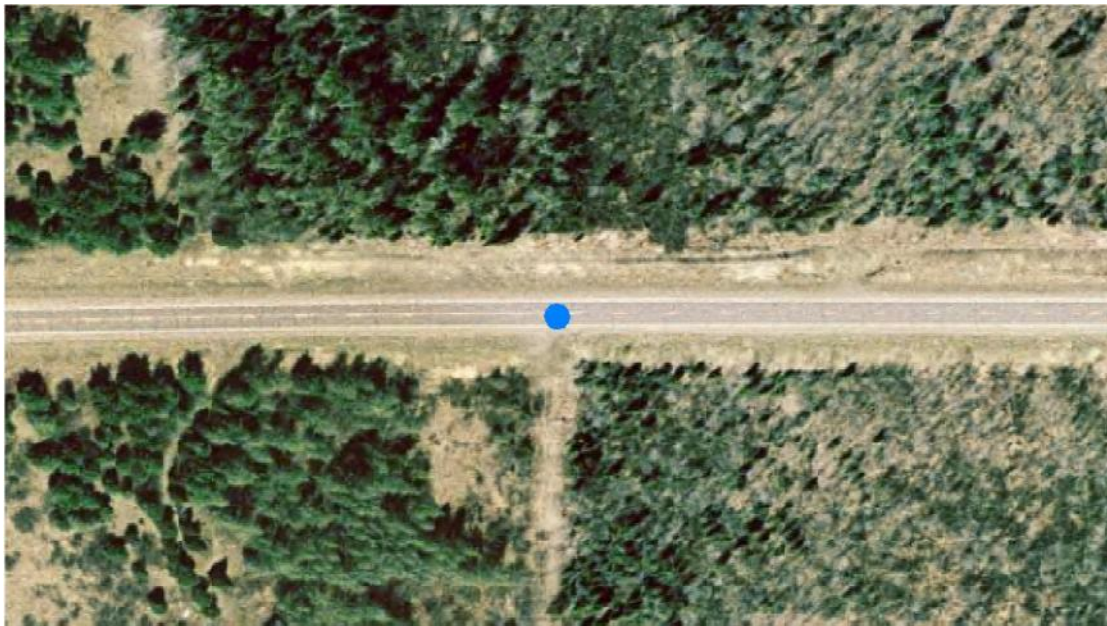
**CERTIFICATION**

I GREGORY S. MAINES, REGISTERED LAND SURVEYOR NO. 2729, HEREBY CERTIFY THAT THE CORNER LOCATION ON THIS RECORD WAS REFERENCED BY ME OR UNDER MY DIRECTION AND CONTROL AND THAT THIS U.S. PUBLIC LAND SURVEY MONUMENT RECORD IS COMPLETE TO THE BEST OF MY KNOWLEDGE AND BELIEF.

*Gregory S. Maines* 5/29/12  
 SIGNATURE

**SOUTHEAST CORNER - SECTION 5, T 34 N, R 4 E**

OVERVIEW



MONUMENT SET



FACING NORTH



**SOUTHEAST CORNER - SECTION 5, T 34 N, R 4 E**

FACING EAST



FACING SOUTH



FACING WEST

