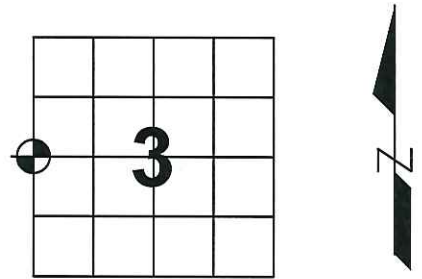


U.S. PUBLIC LAND SURVEY MONUMENT RECORD

Note: This form is intended and designed to fulfill all requirements of Wisconsin Administrative Code, Chapter A-E 7.08, U.S. Public Land Survey Monument Record (3) (a) (b) (c) (d) (e) (f) (g) (h) (i). An additional sheet may be added if necessary to conform with said requirements.

(a) Corner location: Township 34 North
 Range 4 East
 Town/City/Village Tomahawk
 County Lincoln

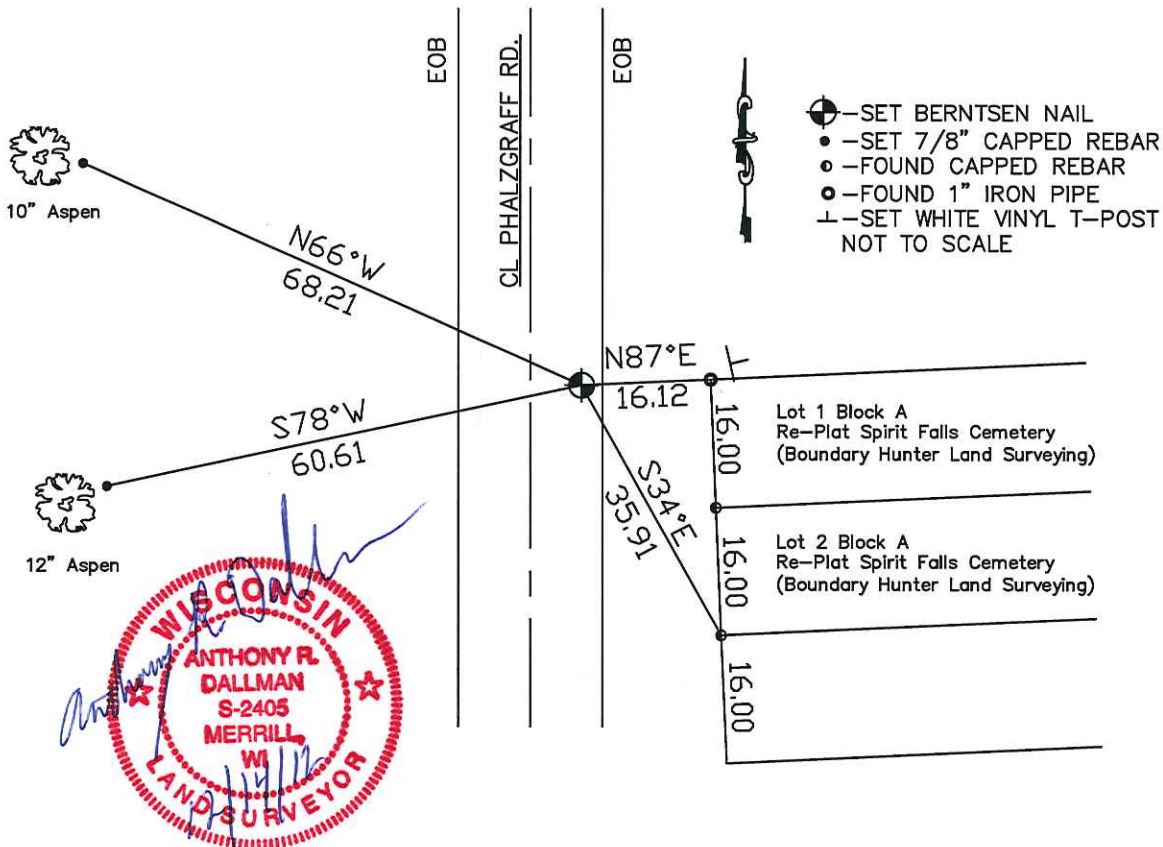


(b) (f) (g) (h) Description of monument found at this corner and if it was accepted, state all evidence (material, testimonial, occupational, plats, records, other monuments) used as basis for accepting. If not accepted or if nothing was found, state evidence used as basis for establishing location. If reestablished through lost corner proportionate methods, indicate all monuments, distances and directions used to establish.

April 1865 – Palmer, Edward D. Set post for 1/4 corner at 35.60 chains.
 Ties: Iron Wood 6 S41°W 21 Lks
 Birch 8 N15°E 37 Lks

April 2012 – Dallman, Anthony R. Replaced previously set P.K. Nail with a Berntsen Nail 2.2' West of the East edge of bituminous of Phalzgraff Rd. Used CL extensions from the north and south along Phalzgraff Rd. and old fencelines running east and west during survey work in Section 3 in 2007 & 2008. Set ties as shown below:

(c) (d) (e) Plan view of corner with ties to at least 4 witness monuments. If in disagreement with previously established corner, show the distance between the two corners and also indicate the ties to the disputed corner.



(i) I, Anthony R. Dallman
 (type or print name) certify that the corner location on this record was determined by me or under my direction and control and that this U.S. Public Land Survey Monument Record is correct and complete to the best of my knowledge and belief.

Anthony R. Dallman Signature 12/14/12 Date

Index No. **C-13**