

CERTIFIED LAND CORNER RESTORATION

Index No. E-15

State of Wisconsin }
County of LINCOLN } ss.

I DAVID L. LEMKE, do hereby certify that on the 14th day of NOVEMBER, 1988, I found evidence of the SOUTH 1/4 corner of SECTION 3 Township 34, North, Range 4 EAST, Fourth Principal Meridian, as described hereon; and that from this evidence I established a new monument and accessories as described hereon to perpetuate the original location of this corner.

Resident witnesses:

.....
.....
.....

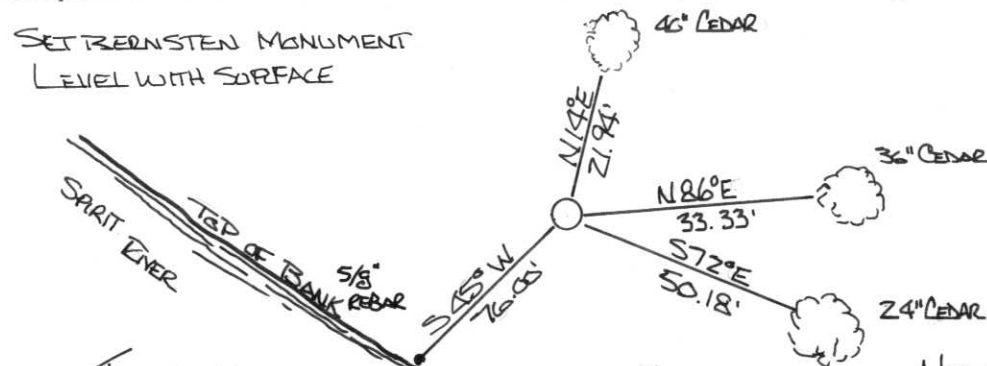
History of original corner establishment:

POST SET BY EDWARD PALMER APRIL 20, 1865

Description of corner evidence found:



Description of monument and accessories I established to perpetuate the original location of this corner.



Dated at TOMAHAWK, Wis., this 16 day of NOVEMBER, 1988

Signature David L. Lemke Title REGISTERED LAND SURVEYOR Registration No. S-1845
(County Surveyor, Registered Land Surveyor, or other duly authorized official)

Office of Register of Deeds, County of....., I hereby certify that the within instrument was filed in this office for record on the.....day of....., 19..... at.....o'clock..... M.

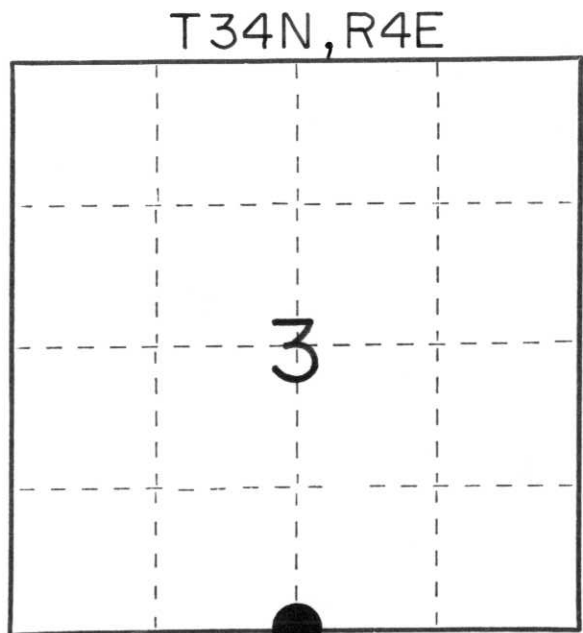
(Register of Deeds)

By.....Deputy

Stock No. 26272



FORM 985



○ = Corner monument restored.





