

LINCOLN COUNTY U.S. PUBLIC LAND SURVEY MONUMENT LOCATION RECORD

SECTION 2
TOWNSHIP 34 N
RANGE 4 E

E-19
NO.

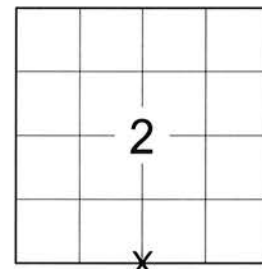
LANDMARK BENCHMARK _____
CORNER IDENTITY: BERNTSEN SNM1 STEEL NAIL MARKER

FOUND
SET
RESET
RE-TIED

TOMAHAWK

CITY, VILLAGE, TOWN

SECTION



LOCATION
(Indicated By X)



LINCOLN COUNTY COORDINATE: N: 222340.762

E: 325509.792

ELEVATION-(FEET): _____ DATUM: 83 (2011)

WEATHER: P. CLOUDY

DATE OF SURVEY: 07/25/2019 TEMPERATURE: 75 °F

SURVEY PARTY: KEITH WALKOWSKI AND AUSTIN PELOT

BASIS FOR MONUMENT LOCATION:

(DESCRIBE METHOD OF SURVEY AND CORNER AUTHENTICATION)

SEARCHED FOR THE SOUTH 1/4 CORNER OF SECTION 2 BEFORE THE START OF THE RESURFACING PROJECT ON HWY "86" AND FOUND A SMP NAIL AND ALL 5 TIES FROM THE 2012 TIE SHEET BY JAMES D. REIN. SET A SNM1 STEEL NAIL MARKER ALONG WITH 2 ADDITIONAL TIES AFTER COMPLETION OF RESURFACING PROJECT TO PERPETUATE THE CORNER LOCATION AS SHOWN BELOW.



CERTIFIED CORRECT:

Keith J. Walkowski

KEITH J. WALKOWSKI S-2717
Professional Land Surveyor

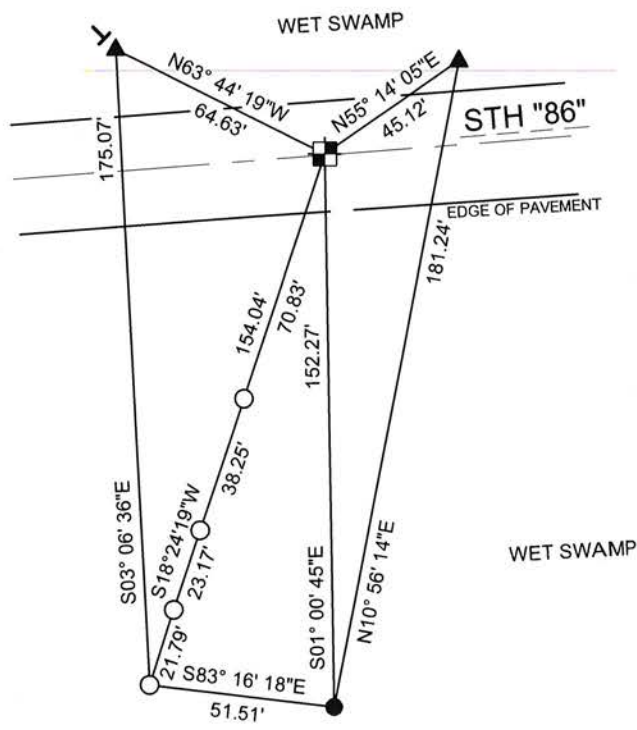
DATE: OCTOBER 15TH, 2019

FIELD BOOK NO. NA PAGE NO. NA

COMPANY RIVERSIDE LAND SURVEYING LLC

TIE SKETCH:

- SET BERNTSEN SNM1 STEEL NAIL MARKER
- FOUND RED CAPPED REBAR
- SET BERNTSEN SSDR-130
- FOUND CAPPED 1" IRON PIPE
- SET VINYL "T" POST



RECEIVED BY LINCOLN COUNTY
SURVEYOR THIS 12TH DAY
OF November 20 19
Terry Dahn
COUNTY SURVEYOR

NOTE: CORNER LIES 0.35' NORTH OF CENTERLINE

BEARINGS ARE BASED ON THE LINCOLN COUNTY COORDINATE SYSTEM NAD 83 (2011) AND REFERENCED AS SHOWN

THIS DRAWING IS NOT TO SCALE

E-19
NO.

U.S. PUBLIC LAND SURVEY MONUMENT RECORD

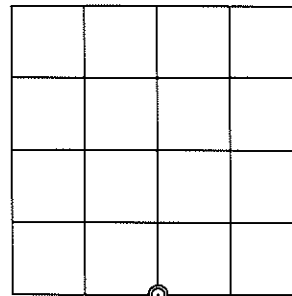
Note: This form is intended and designed to fulfill all requirements of the Wisconsin Administrative Code, Chapter A-E 7.08 U.S. Public Land Monument Record (3)(a)(b)(c)(d)(e)(f)(g)(h)(i). An additional sheet may be added if necessary to conform with said requirements.

(a) CORNER LOCATION:
 South 1/4 corner of Section 2
 Township 34 North
 Range 4 East
 Town of Tomahawk
 County of Lincoln

COORDINATES
 North: 222340.735
 East: 325509.764
 Control Station: Tomahawk W. GPS
 Latitude: N 45°27'14.12482
 Longitude: W 89°58'49.08787"
 Datum: NAD 83 (91)
 Method: Direct RTK GPS

(RECORDING AREA)

SECTION 2



(b) HISTORY OF ORIGINAL CORNER ESTABLISHMENT

Original Surveyor: Edward D. Palmer, Deputy Surveyor
 Date of Survey: Commenced April 10, 1865
 Completed April 20, 1865
 Original B.T.'s: Tamarac 7" N 14°W, 9 links
 Tamarac 10" S 61°E, 14 links

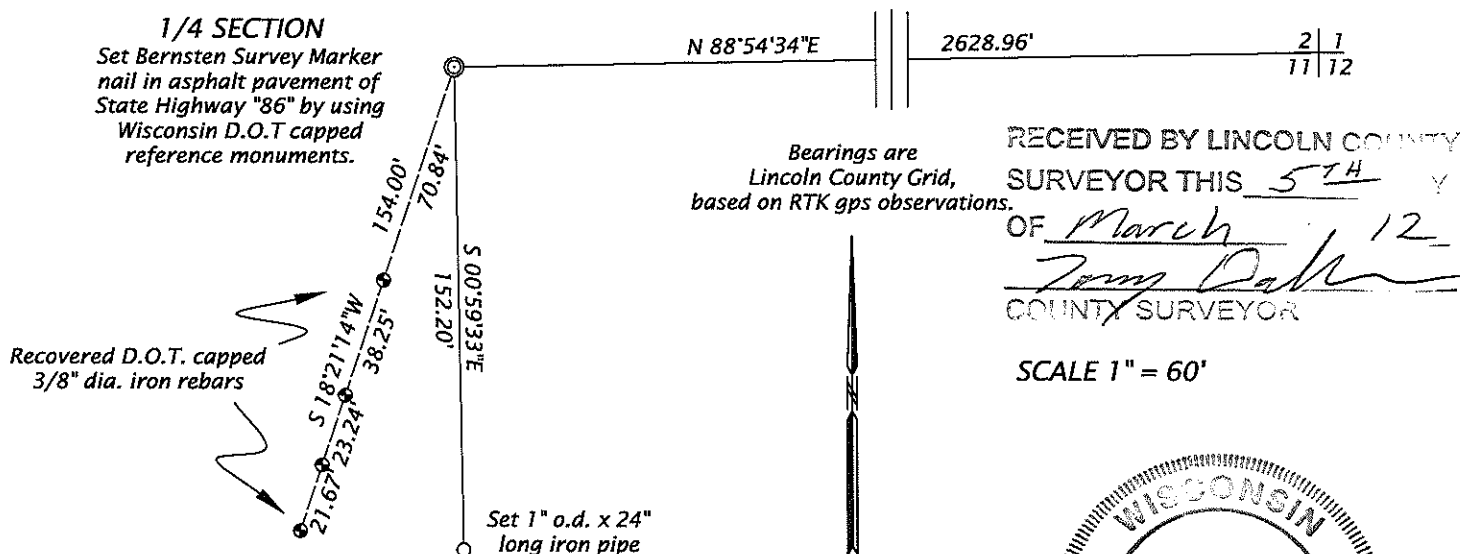
(f)(g)(h) DESCRIPTION OF MONUMENT FOUND AT THIS CORNER AND IF IT WAS ACCEPTED, STATE ALL EVIDENCE (MATERIAL, TESTIMONIAL, OCCUPATIONAL, PLATS, RECORDS, OTHER MONUMENTS) USED AS A BASIS FOR ESTABLISHING LOCATION. IF NOT ACCEPTED OF IF NOTHING WAS FOUND, STATE EVIDENCE USED AS BASIS FOR ESTABLISHING LOCATION. IF REESTABLISHED THROUGH LOST CORNER PROPORTIONATE METHODS, INDICATE ALL MONUMENTS, DISTANCES AND DIRECTIONS USED TO ESTABLISH. INDICATE TYPE OF MONUMENT AND SIGN POST FOUND OR SET.

December 27, 1988 - Robert C. Wylie, RLS No. 66, filed U.S. Public Land Survey Monument Record in Lincoln County Surveyor's Office for re-establishment of the northwest corner of Section 12, by relying on a combination method of proportionate measurement with the centerline road alignment for State Highway "86". This monument record shows a proportionate distance of 2628.62 feet for north line of the NE 1/4 of Section 11.

May 14, 1991 - R. B. Johnson, Survey Crew Chief, Wisconsin D.O.T. - Record and Certification of U.S. Public Land Survey Control Station filed with the Lincoln County Surveyor's Office identifies the corner is monumented by a RR spike. The monument record shows four D.O.T. red plastic capped 5/8" x 24" re-bar reference monuments were placed in a direct line.

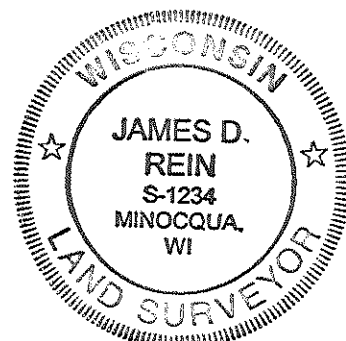
February 14, 2012 - James D. Rein, RLS No 1234 - Railroad spike has been removed by road reconstruction, thus we set a Bernsten Survey Marker nail to mark the re-established position in highway asphalt pavement at record distance based upon recovery of the four D.O.T. reference monuments as shown below in the plan view.

(c)(d)(e) PLAN VIEW OF CORNER WITH TIES TO AT LEAST 4 WITNESS MONUMENTS. IF IN DISAGREEMENT WITH PREVIOUSLY ESTABLISHED CORNER, SHOW THE DISTANCE BETWEEN THE TWO CORNERS AND ALSO INDICATE THE TIES TO THE DISPUTED CORNER.



RECEIVED BY LINCOLN COUNTY
 SURVEYOR THIS 5TH Y
 OF March 12
James D. Rein
 COUNTY SURVEYOR

SCALE 1" = 60'



(i) I, JAMES D. REIN, PROFESSIONAL LAND SURVEYOR NO. S-1234 HEREBY CERTIFY THAT THE CORNER LOCATION ON THIS RECORD WAS DETERMINED BY ME OR UNDER MY DIRECTION AND CONTROL AND THAT THIS U.S. PUBLIC LAND SURVEY MONUMENT RECORD IS CORRECT AND COMPLETE TO THE BEST OF MY KNOWLEDGE AND BELIEF.

SIGNATURE

DATE

2-27-12

INDEX NO. E-19

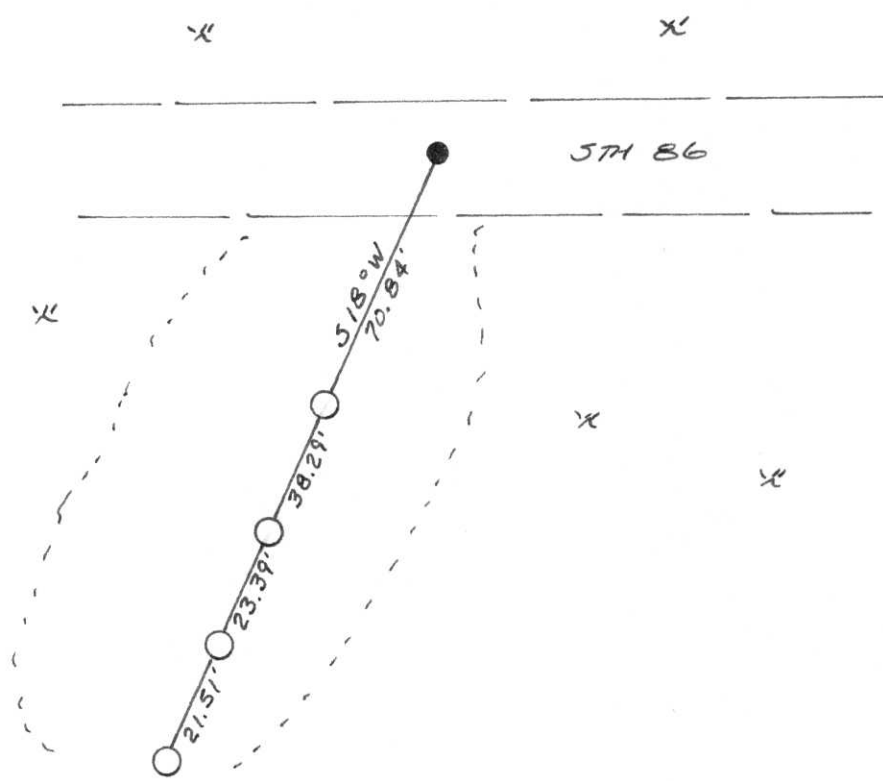
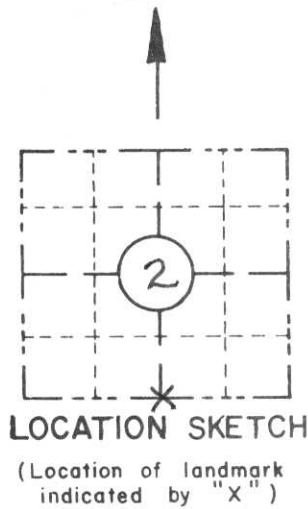
RECORD AND CERTIFICATION OF U.S. PUBLIC LAND SURVEY CONTROL STATION

State of Wisconsin / Department of Transportation

E-D-716-72

District 7	Project I. D. 9215-06-00	Located by R.B. JOHNSON - SURVEY CREW CHIEF			
Corner S 1/4	2 SECTION	Township 34 N	Range (E,W) 4 E	County LINCOLN	
Wisconsin Coordinates CORNER	East (X) 2,012,986.06	North (Y) 590,865.84	Elevation (Z)	Zone C	
Control Station Name	East (X)	North (Y)	Elevation (Z)	Zone	
Horizontal — NORTH AMERICAN, 1927	CONTROL DATUM		Vertical — MEAN SEA LEVEL, 1929 ADJUSTMENT		
Horizontal — 2 ND Order	SURVEY CONTROL		Vertical — _____ Order		

SKETCH



I hereby certify that on the 14TH day of MAY 1991, that I did locate the above corner which was evidenced by R.R. SPIKE

; I further certify that to perpetuate the location of such corner I did, at the exact location thereof, place a permanent marker consisting of _____

; I further certify that I did establish 4 references or witness monuments consisting of 5/8" X 24" RE-BARS WITH RED PLASTIC D.O.T. CAPS

located as shown above:

SEAL

Signature Registered Land Surveyor	Registration No. S--	Title
------------------------------------	-------------------------	-------

CORNER
S 1/4 COR
SECTION
2
TOWN
34 N
RANGE
4 E
E-19