

LINCOLN COUNTY U.S. PUBLIC LAND SURVEY MONUMENT LOCATION RECORD

SECTION 2
TOWNSHIP 34 N
RANGE 4 E

E-21
NO.

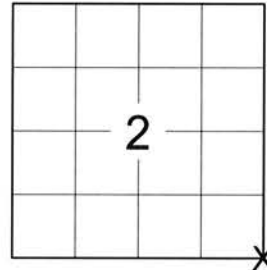
LANDMARK BENCHMARK _____
CORNER IDENTITY: BERNTSEN SNM1 STEEL NAIL MARKER

FOUND
SET
RESET
RE-TIED

TOMAHAWK

CITY, VILLAGE, TOWN

SECTION



LOCATION
(Indicated By X)



LINCOLN COUNTY COORDINATE: N: 222390.810
E: 328138.253

ELEVATION-(FEET): _____ DATUM: 83 (2011)

WEATHER: P. CLOUDY

DATE OF SURVEY: 07/25/2019 TEMPERATURE: 75 °F

SURVEY PARTY: KEITH WALKOWSKI AND AUSTIN PELOT

BASIS FOR MONUMENT LOCATION:

(DESCRIBE METHOD OF SURVEY AND CORNER AUTHENTICATION)

SEARCHED FOR THE SOUTHEAST CORNER OF SECTION 2 AND FOUND THE CALLED FOR SMP NAIL ALONG WITH ALL 4 TIES FROM THE 2012 TIESHEET BY JAMES D. REIN. ACCEPTED THE FOUND SMP NAIL AS THE CORNER AND ADDED AN ADDITIONAL TIE AND RESET A BERNTSEN SNM1 STEEL NAIL MARKER AT THE CORNER UPON COMPLETION OF THE STH "86" RESURFACING PROJECT TO PERPETUATE THE CORNER LOCATION AS SHOWN BELOW.



CERTIFIED CORRECT:

Keith J. Walkowski

KEITH J. WALKOWSKI S-2717
Professional Land Surveyor

DATE: OCTOBER 15TH, 2019

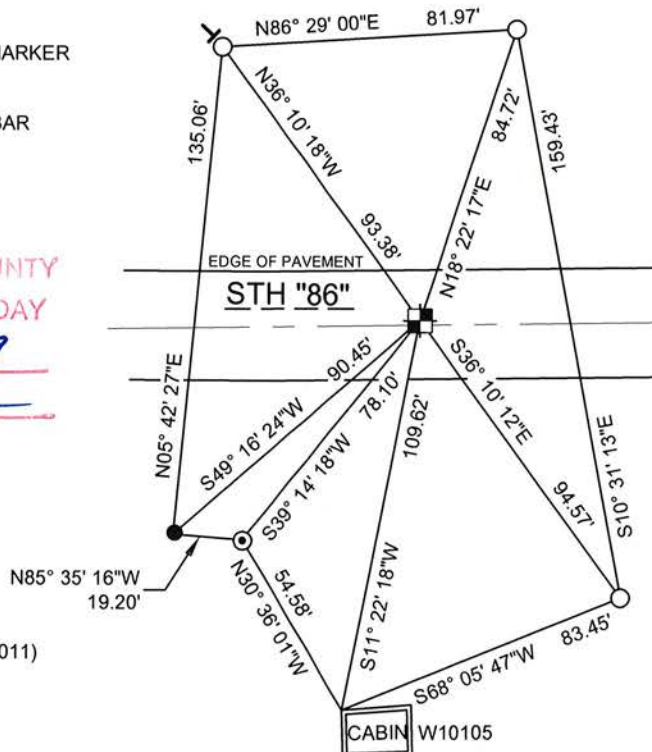
FIELD BOOK NO. NA PAGE NO. NA

COMPANY RIVERSIDE LAND SURVEYING LLC

TIE SKETCH:

- SET BERNTSEN SNM1 STEEL NAIL MARKER
- FOUND RED CAPPED 5/8" REBAR
- FOUND ALUMINUM CAPPED 7/8" REBAR
- SET VINYL "T" POST
- FOUND 1 1/4" O.D. IRON PIPE

RECEIVED BY LINCOLN COUNTY
SURVEYOR THIS 12TH DAY
OF November 20 19
Tony Dahl
COUNTY SURVEYOR



NOTE: CORNER LIES 1.2' NORTH OF CENTERLINE

BEARINGS ARE BASED ON THE LINCOLN COUNTY COORDINATE SYSTEM NAD 83 (2011) AND REFERENCED AS SHOWN

THIS DRAWING IS NOT TO SCALE

E-21
NO.

U.S. PUBLIC LAND SURVEY MONUMENT RECORD

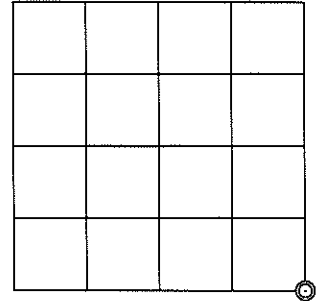
Note: This form is intended and designed to fulfill all requirements of the Wisconsin Administrative Code, Chapter A-E 7.08 U.S. Public Land Monument Record (3)(a)(b)(c)(d)(e)(f)(g)(h)(i). An additional sheet may be added if necessary to conform with said requirements.

(a) CORNER LOCATION: Southeast corner of Section 2
Township 34 North
Range 4 East
Town of Tomahawk
County of Lincoln

COORDINATES
North: 222390.766
East: 328138.246
Control Station: Tomahawk W. GPS
Latitude: N 45°27'14.12482"
Longitude: W 89°58'49.08787"
Datum: NAD 83 (91)
Method: Offset RTK GPS

(RECORDING AREA)

SECTION 2



(b) HISTORY OF ORIGINAL CORNER ESTABLISHMENT
Original Surveyor: Edward D. Palmer, Deputy Surveyor
Date of Survey: Commenced April 10, 1865
Completed April 20, 1865
Original B.T.'s: Hemlock 18" N 40°W 24 lks; Hemlock 16" N 20°E, 18 lks;
Hemlock 16" S 63°E, 30 lks; Hemlock 20" S30°W, 40 lks.

(f)(g)(h) DESCRIPTION OF MONUMENT FOUND AT THIS CORNER AND IF IT WAS ACCEPTED, STATE ALL EVIDENCE (MATERIAL, TESTIMONIAL, OCCUPATIONAL, PLATS, RECORDS, OTHER MONUMENTS) USED AS A BASIS FOR ESTABLISHING LOCATION. IF NOT ACCEPTED OF IF NOTHING WAS FOUND, STATE EVIDENCE USED AS BASIS FOR ESTABLISHING LOCATION. IF REESTABLISHED THROUGH LOST CORNER PROPORTIONATE METHODS, INDICATE ALL MONUMENTS, DISTANCES AND DIRECTIONS USED TO ESTABLISH. INDICATE TYPE OF MONUMENT AND SIGN POST FOUND OR SET.

December 27, 1988 - Robert C. Wylie, RLS No. 66, filed U.S. Public Land Survey Monument Record in Lincoln County Surveyor's Office for re-establishment of the northwest corner of Section 12, by relying on a combination method of proportionate measurement with the centerline road alignment for State Highway "86". He monuments the corner position with railroad spike in the pavement. This monument record shows a proportionate distance of 2628.62 feet for north line of the NE 1/4 of Section 11.

April 2, 1991 - R. B. Johnson, Survey Crew Chief, Wisconsin D.O.T. - Record and Certification of U.S. Public Land Survey Control Station filed with the Lincoln County Surveyor's Office identifies the corner is monumented by a RR spike. The monument record shows four D.O.T. red plastic capped 5/8" x 24" re-bar reference monuments were placed on intersecting lines at the corner position.

November 11, 2008 - Mathew E. Hoglund, RLS No. 1910, U.S. Public Land Survey Monument Record, indicates a found 1/2" iron rod was found monumenting corner, referenced by three of the DOT re-bars. He placed one additional aluminum capped 7/8" iron rebar reference monument.

February 16, 2012 - James D. Rein, RLS No 1234 - Iron rod has been removed by road reconstruction, thus we set a Bernsten Survey Marker nail to mark the re-established position in highway asphalt pavement at record distance and on a direct line between the recovered northwest and southeast D.O.T. reference monuments. We made ties to the recovered northeast and southwest reference monuments as shown below in the plan view.

(c)(d)(e) PLAN VIEW OF CORNER WITH TIES TO AT LEAST 4 WITNESS MONUMENTS. IF IN DISAGREEMENT WITH PREVIOUSLY ESTABLISHED CORNER, SHOW THE DISTANCE BETWEEN THE TWO CORNER AND ALSO INDICATE THE TIES TO THE DISPUTED CORNER.

RECEIVED BY LINCOLN COUNTY

SURVEYOR THIS 5TH DAY *Found D.O.T. plastic capped 3/8" dia. re-bar*
OF March 20 12
James D. Rein
COUNTY SURVEYOR

1/4 CORNER

S 2
S 11

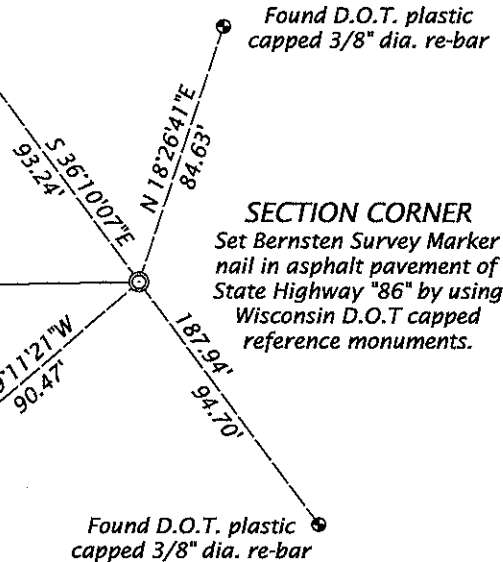
N 88°54'34"E 2628.96'

Bearings are
Lincoln County Grid,
based on RTK gps observations

Found aluminum capped 7/8" dia. re-bar

Found D.O.T. plastic capped 3/8" dia. re-bar

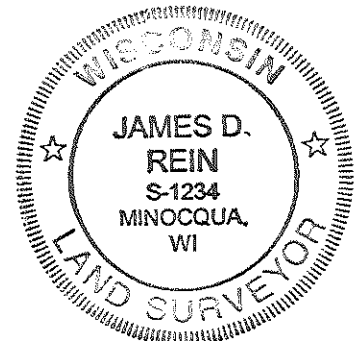
SECTION CORNER
Set Bernsten Survey Marker nail in asphalt pavement of State Highway "86" by using Wisconsin D.O.T capped reference monuments.



(i) I, JAMES D. REIN, PROFESSIONAL LAND SURVEYOR NO. S-1234 HEREBY CERTIFY THAT THE CORNER LOCATION ON THIS RECORD WAS DETERMINED BY ME OR UNDER MY DIRECTION AND CONTROL AND THAT THIS U.S. PUBLIC LAND SURVEY MONUMENT RECORD IS CORRECT AND COMPLETE TO THE BEST OF MY KNOWLEDGE AND BELIEF.

SIGNATURE

DATE



INDEX NO. E-21

U.S. PUBLIC LAND SURVEY MONUMENT RECORD

NOTE: This form is intended and designed to fulfill all requirements of Wisconsin Administrative Code, Chapter A-E 7 .08 U.S. Public Land Survey Monument Record (3)(a)(b)(c)(d)(e)(f)(g)(h)(i). An additional sheet may be added if necessary to conform with said requirements.

(a) Corner location: Township 34 North

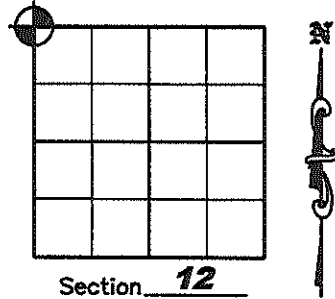
Range 4 East

Town of TOMAHAWK

Proj. 593

County of LINCOLN

Lincoln County N 222390.914
Coordinates E 328138.147



(b)(f)(g)(h) Description of monument found at this corner and if it was accepted, state all evidence (material, testimonial, occupation, plats, records, other monuments) used as a basis for accepting. If not accepted or if nothing was found, state evidence used as a basis for establishing location. If reestablished through lost corner proportionate methods, indicate all monuments, distances and directions used to establish. Indicate type of monument found or set and sign post.

April 1865 – Edward D. Palmer set corner post; BT's: Hemlock 18" N40°W, 24 lks.; 16" Hemlock, N20°E, 18 lks.; Hemlock 16" S63°E, 30lks.; 20" Hemlock S30°W, 46 lks.

October 28, 1988 – R. C. Wylie visited corner, no monument or evidence found. Corner was set by proportioning distances along the centerline of S.T.H. "86", and observing significant bends in alignment at or near each 1/2 mile, between existing monuments at the NE corner of Section 12 and the NW corner of Section 11. Ratio of current distances to original government survey distances is 0.999 for each 1/2 mile segment. Ratio of current distance to existing section corner 2 miles South to original government survey distance is 0.997, reinforcing position of the corner in the highway right-of-way. No reliable corners exist to the North for further check. Railroad Spike Set. No monument set due to pending reconstruction of State Highway 86; BT's: 5.9" Sugar Maple S28°E 80.00', 8.0 Sugar Maple S57°W 92.58', 8.0 Sugar Maple N55°W 98.75', Power Pole (no number) N75°E 112.95' to a PK nail. (See Plat of Survey dated August 1990, Lincoln County Land Information Office Map Number S110-D).

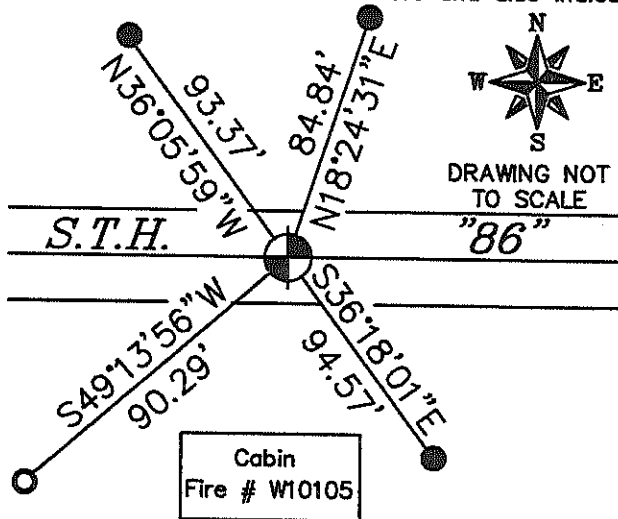
April 2, 1991 – Department of Transportation found railroad spike in centerline of State Highway "86". They set four 5/8" by 24" rebar with red plastic D.O.T. caps for witness corners: N24°W, 93.24'; N31°E, 84.65'; S24°E, 94.70'; S31°W, 69.46'

April 12, 2005 – Matthew E. Hoglund, subcontractor for the Plat of Survey by Stephen J. Favorite dated January 25, 2005, Lincoln County Land Information Office Map Number L396B. We found and accepted a 1/2" iron rod in the centerline of State Highway "86" along with 3 of the D.O.T. red capped iron rebars. We set 1 new witness corner as shown below.

(c)(d)(e) Plan view of corner with ties to at least 4 witness monuments. If in disagreement with previously established corner, show the distances between the two corners and also indicate the ties to the disputed corner.

Legend

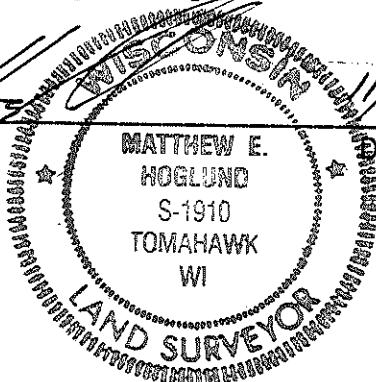
- 7/8" x 30" IRON REBAR WITH ALUMINUM CAP SET
- 5/8" IRON REBAR FOUND WITH RED D.O.T. CAP
- 1/2" IRON ROD FOUND



(i) I, Matthew E. Hoglund, certify that the corner location on this record was determined by me under my direction and control and that this U.S. Public Land Survey Monument is correct and complete to the best of my knowledge and belief.

Matthew E. Hoglund
Signature

Date 11/3/2008



RECEIVED BY LINCOLN COUNTY SURVEYOR THIS 4TH DAY OF November 20 08
Tom Dahl
COUNTY SURVEYOR

E-21

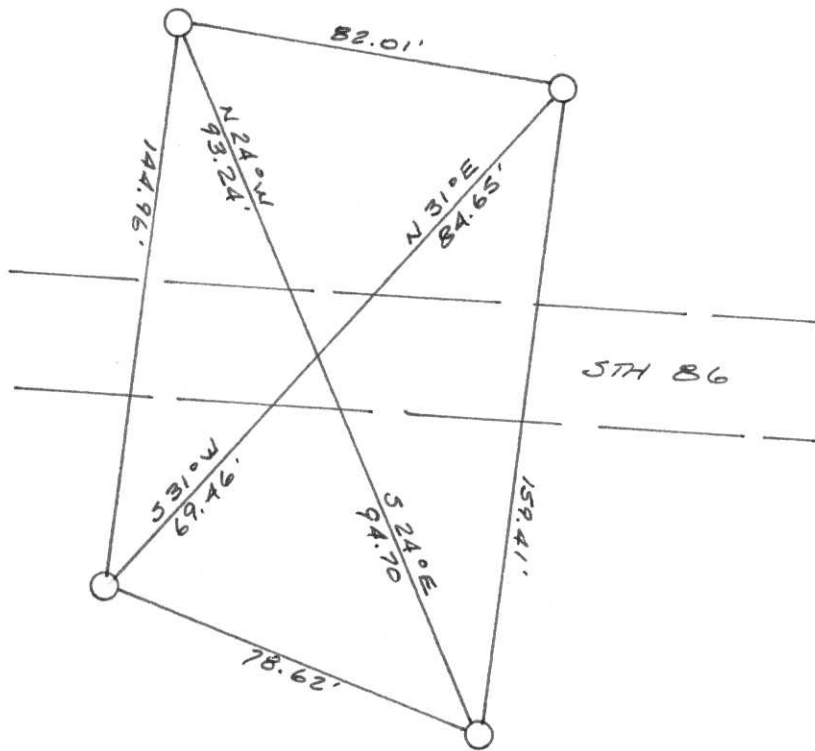
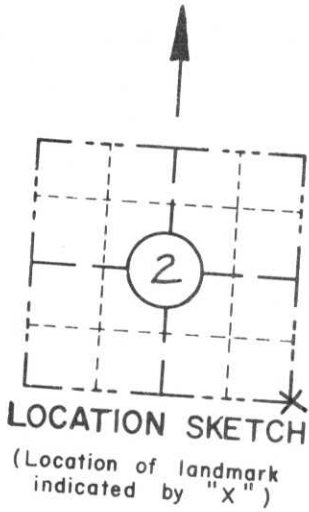
RECORD AND CERTIFICATION OF U.S. PUBLIC LAND SURVEY CONTROL STATION

E-D-716-72

State of Wisconsin / Department of Transportation

District 7	Project I. D. 9215-06-00	Located by R.B. JOHNSON - SURVEY CREW CHIEF			
Corner S.E. Cor.	2 SECTION	Township 34 N	Range (E,W) 4 E	County LINCOLN	
Wisconsin Coordinates CORNER	East (X) 2,015,614.17	North (Y) 590,524.72	Elevation (Z)	Zone C	
Control Station Name	East (X)	North (Y)	Elevation (Z)	Zone	
Horizontal — NORTH AMERICAN, 1927		CONTROL DATUM		Vertical — MEAN SEA LEVEL, 1929 ADJUSTMENT	
Horizontal — 2ND Order		SURVEY CONTROL		Vertical — _____ Order	

SKETCH



I hereby certify that on the 2ND day of APRIL 1991, that I did locate the above corner which was evidenced by R.R. SPIKE

_____ ; I further certify that to perpetuate the location of such corner I did, at the exact location thereof, place a permanent marker consisting of _____

_____ ; I further certify that I did establish 4 references or witness monuments consisting of 5/8" X 24" RE-BARS WITH RED PLASTIC D.O.T. CAPS

located as shown above;

SEAL

Signature Registered Land Surveyor	Registration No. S--	Title
------------------------------------	-------------------------	-------

CORNER
S.E. Cor.
SECTION
2
TOWN
34 N
RANGE
4 E
E-2

FIELD SURVEY NOTES

E-D-702 6-70

State of Wisconsin / Department of Transportation

FEAN

CORNER

E 21 T 34 N - R 4 E

R.R. SPIKE IN RD

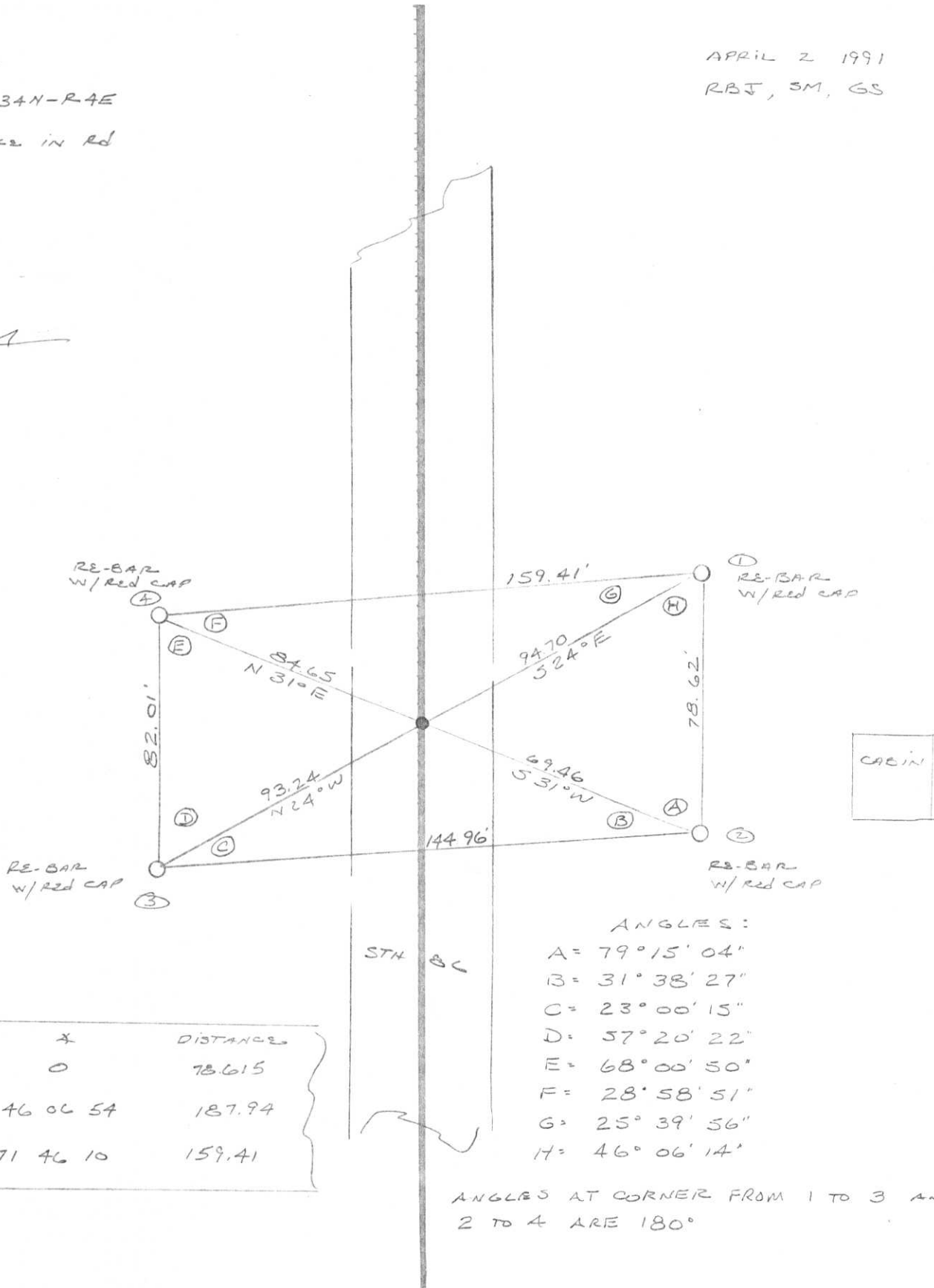
APRIL 2 1991

RBJ, SM, GS

2 A

154.175
69.460
84.655

187.94
94.70
93.24



ANGLES:

- A = 79° 15' 04"
- B = 31° 38' 27"
- C = 23° 00' 15"
- D = 57° 20' 22"
- E = 68° 00' 50"
- F = 28° 58' 51"
- G = 25° 39' 56"
- H = 46° 06' 14"

ANGLES AT CORNER FROM 1 TO 3 AND 2 TO 4 ARE 180°

	X	DISTANCE
1-2	0	78.615
1-3	46 06 54	187.94
1-4	71 46 10	159.41

- TOPOGRAPHY
- SURVEY ALIGNMENT

FIELD SURVEY NOTES

E-D-702 6-70

E-21

CORNER

E 21 T34N-R4E

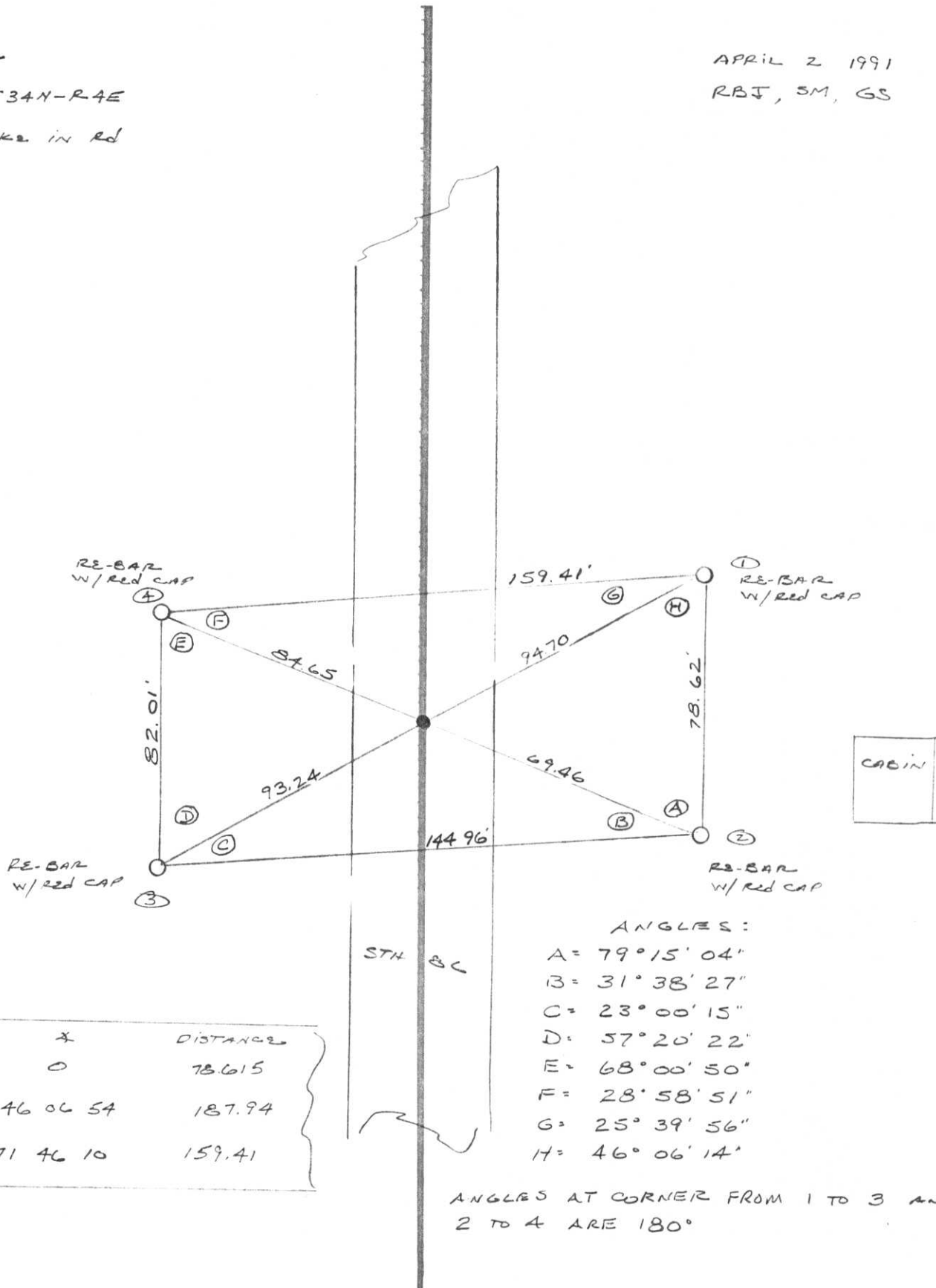
RR SPIKE IN RD

APRIL 2 1991

RBJ, SM, GS

154.115
69.460
84.655

187.94
94.70
93.24



CABIN

STN BC

ANGLES:
A = 79° 15' 04"
B = 31° 38' 27"
C = 23° 00' 15"
D = 57° 20' 22"
E = 68° 00' 50"
F = 28° 58' 51"
G = 25° 39' 56"
H = 46° 06' 14"

ANGLES AT CORNER FROM 1 TO 3 AND 2 TO 4 ARE 180°

	X	DISTANCE
1-2	0	78.615
1-3	46 06 54	187.94
1-4	71 46 10	159.41

TOPOGRAPHY

ALIGNMENT

U.S. PUBLIC LAND SURVEY MONUMENT RECORD

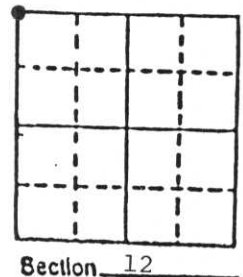
Note: This form is intended and designed to fulfill all requirements of Wisconsin Administrative Code, Chapter A-E 5.02, U.S. Public Land Survey Monument Record (3) (a) (b) (c) (d) (e) (f) (g) (h) (i). An additional sheet may be added if necessary to conform with said requirements.

(a) Corner location: Township 34 North

Range 4 East

Town Tomahawk

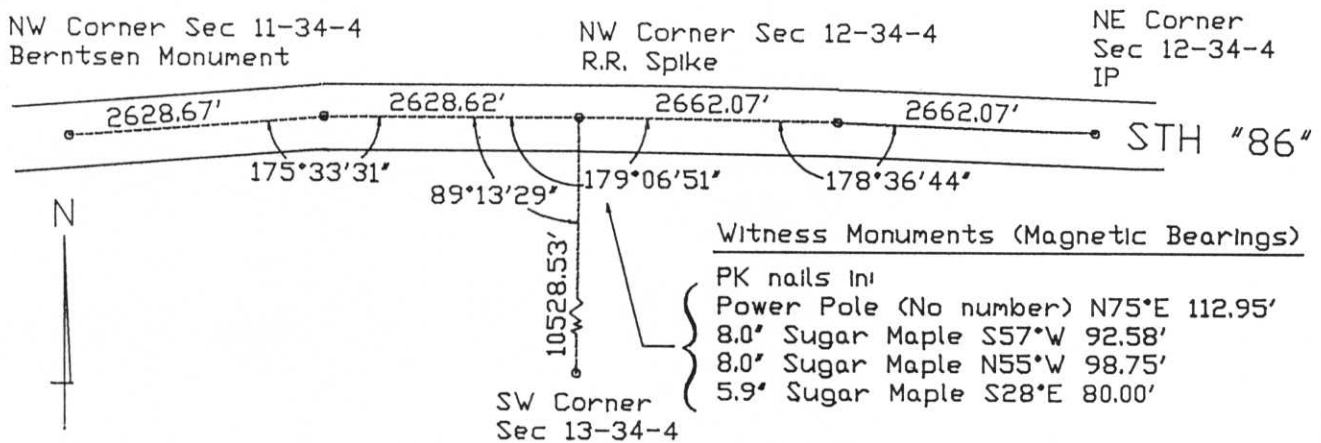
County Lincoln



b) (f) (g) (h) Description of monument found at this corner and if it was accepted, state all evidence (material, testimonial, occupational, plats, records, other monuments) used as a basis for accepting. If not accepted or if nothing was found, state evidence used as basis for establishing location. If reestablished through lost corner proportionate methods, indicate all monuments, distances and directions used to establish.

No monument or evidence found. Corner was set by proportioning distances along the centerline of STH 86, and observing significant bends in alignment at or near each 1/2 mile, between existing monuments at NE corner Section 12-34-4 and NW corner Section 11-34-4. Ratio of current distances to original government survey distances is 0.999 for each 1/2 mile segment. Ratio of current distance to existing section corner 2 miles south to original government survey distance is 0.997, reinforcing position of the corner in the highway right-of-way. No reliable corners exist to the north for a further check. See proportioning and witness monuments below. R.R. spike set. No monument set due to pending reconstruction of state highway.

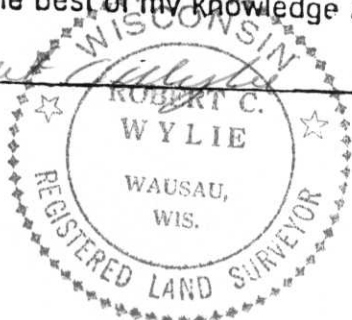
c) (d) (e) Plan view of corner with ties to at least 4 witness monuments. If in disagreement with previously established corner, show the distances between the two corners and also indicate the ties to the disputed corner.



(i) I, Robert C. Wylie, RLS-66
 (type or print name) certify that the corner location on this record was determined by me or under my direction and control and that this U.S. Public Land Survey Monument Record is correct and complete to the best of my knowledge and belief.

Signature

Date



Index No. E-21