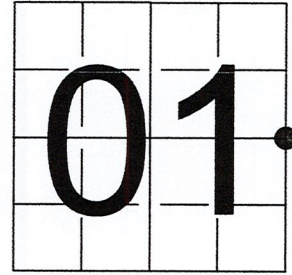


U S PUBLIC LAND SURVEY MONUMENT RECORD

NOTE: This form is intended and designed to fulfill all requirements of Wisconsin Administrative Code, Chapter A-E 7.08 U.S. Public Land Survey Monument Record (3) (a-i)

A-E 7.08(3)(a) Identity of corner:
 EAST 1/4 CORNER SECTION 01,
 TOWNSHIP 34 NORTH,
 RANGE 04 EAST OF THE 4TH PM,
 TOWN OF TOMAHAWK,
 COUNTY OF LINCOLN

WISCORS - LINCOLN COUNTY
 N: 224,973.912 USft (224,973.863)
 E: 333,432.196 USft (333,432.129)
 Datum: NAD83 (2011)
 GNSS Method RTN - Direct
 GNSS Control WISCORS VRS



The coordinate value shown has been verified by the average of two or more GPS observations at a markedly different time. Coordinates shown in parenthesis are provided by Lincoln County.

A-E 7.08(3)(b)

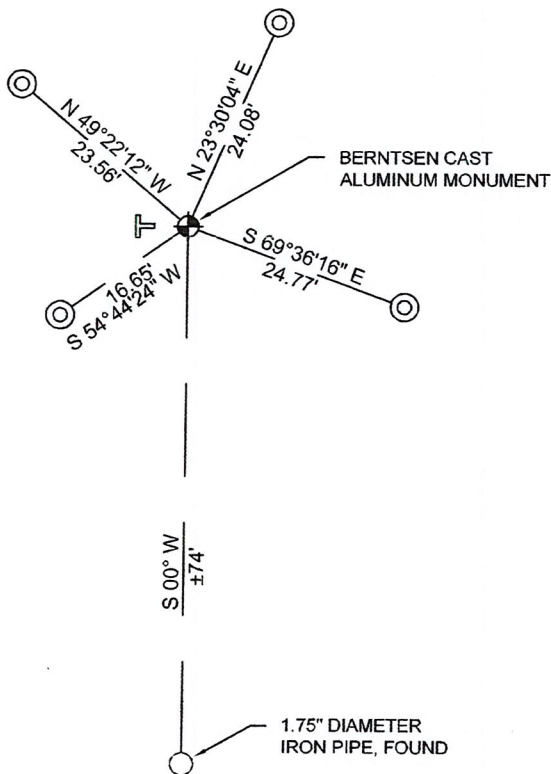
Original Surveyor: Alfred Millard

Date of Original Survey	Commenced:	August 8, 1860	Original Accessories:		
	Completed:	September 1860	Hemlock	12	S 10° E 30 Links
			Y. Birch	18	N 30° E 32 Links

December 20, 2012 - Surveyor 2729 - Gregory S. Maines - indicate this position as "N: 224973.86, E: 333432.13 coordinates provided by Lincoln County Surveyor" on Lincoln County Section Summary - Section 1, T 34 N, R 4 E.

October 31, 2022 - While performing the 2022 Lincoln County PLSS Corner Remonumentation and GPS Services project, I found a wooden fence post and the remains of a barbed wire fence in a rock wall and near the computed position provided by Lincoln County. I also found a 1.75" diameter iron pipe in the rock wall, extending ±48" above grade, and ±74 feet south of the Lincoln County position. I spoke to long time resident, Ron Zeoller about the pipe, he had no idea where it came from and believed the corner should be north of the pipe 80-90 feet. Under the direction of Lincoln County, I restored the corner using coordinates provided by Lincoln County and set a 29.5" long Berntsen cast aluminum monument with a 4 diameter aluminum cap stamped to identify the corner position. I established 4 new reference monuments as shown below.

A-E 7.08(3)(c)(d) Plan view of corner with references to at least 4 witness monuments.

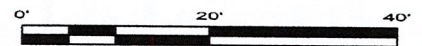


BEARINGS LISTED TO THE NEAREST SECOND ARE REFERENCED TO WISCONSIN COUNTY COORDINATE REFERENCE SYSTEM - LINCOLN COUNTY ZONE. ALL OTHER BEARINGS ARE MAGNETIC

RECEIVED BY LINCOLN COUNTY SURVEYOR THIS 27TH DAY OF December 20 22
Gregory S. Maines
 COUNTY SURVEYOR

LEGEND

- Berntsen cast aluminum monument, set
- 7/8" diameter X 30" long - iron rod with 2" diameter aluminum cap, set
- Vinyl T-post, set ±7 feet west of corner



A-E 7.08(3)(e) 1860 Surveyor set a post, 2012 Surveyor had coordinates. I set a Berntsen cast aluminum monument with a 4" diameter cap stamped to identify corner.

A-E 7.08(3)(f) I restored the corner through ACCEPTANCE OF AN OBLITERATED LOCATION.

A-E 7.08(3)(g)(h) This corner was not determined through lost-corner-proportionate methods.

A-E 7.08(3)(i) I, Jeffrey L. DeMuth, Professional Land Surveyor No. S-2656, hereby certify that the corner location on this record was determined by the Lincoln County Surveyor, and the monuments found or set as shown hereon were measured by me or under my direction and control, and that this U.S. Public Land Survey Monument Record is correct and complete to the best of my knowledge, and belief.



SIGNATURE

December 14, 2022

DATE

C-25

REPORT

2022-Lincoln County PLSS Corner Remonumentation and GPS Services

Wisconsin Corner Point Identification Number: 43404012000

Surveyor: Jeffrey L. DeMuth – S2656

Corner monument: Set Berntsen cast aluminum monument – 4" diameter cap x 29.5" long, at coordinates provided.

Field Book: Cardinal North – Lincoln Co. Remon. – 2022-00

Page: 61

Horizontal Datum: WisCRS – Lincoln County Zone – NAD83(2011)

Date / time of initial measurement:

October 31, 2022 - Start 14:12:58 CDT – End 16:38:30 CDT

Reference monuments:

4 – Set - 7/8" diameter X 30" long iron rods with 2" diameter Lincoln Co. aluminum cap.

Coordinate Table

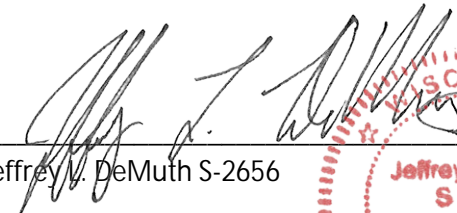
	County Provided	2022 Measurement	Difference
North	224973.863	224973.912	-0.05
East	333432.129	333432.196	-0.07

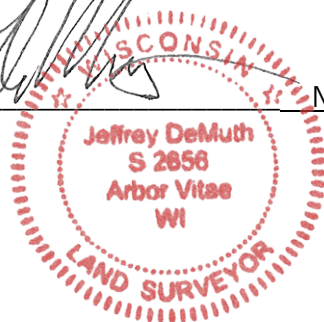
Established coordinates match existing calculated coordinates within reason.

Request Data Log for more information.

Additional Notes:

Monument falls on the east edge of old stone wall that runs N-S from the corner. There is a 1.75" diameter iron pipe to the south of this corner, the pipe is painted white and orange and extends ±48" above grade. I spoke to landowner about the pipe, he said that it wasn't the corner, and thought the corner should be farther north than the pipe.


 Jeffrey L. DeMuth S-2656



November 15, 2022

Date

43404012000_Mon-N



43404012000_North



43404012000_West



43404012000_South



43404012000_East



43404012000_IP

