

# U.S. PUBLIC LAND SURVEY MONUMENT RECORD

NOTE: This form is intended and designed to fulfill all requirements of Wisconsin Administrative Code, Chapter A-E 7.08 U.S. Public Land Survey Monument Record (3)(a)(b)(c)(d)(e)(f)(g)(h)(i). An additional sheet may be added if necessary to conform with said requirements.

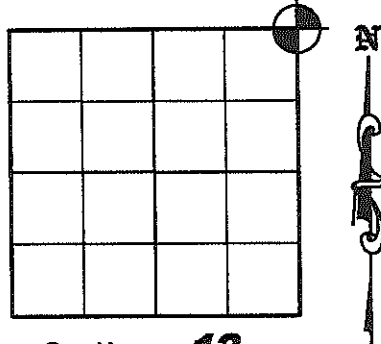
(a) Corner location: Township 34 North

Range 4 East

Town of TOMAHAWK

County of LINCOLN

Proj. 593



Section 12

Lincoln County N 222345.493  
Coordinates E 333461.763

(b)(f)(g)(h) Description of monument found at this corner and if it was accepted, state all evidence (material, testimonial, occupation, plats, records, other monuments) used as a basis for accepting. If not accepted or if nothing was found, state evidence used as a basis for establishing location. If reestablished through lost corner proportionate methods, indicate all monuments, distances and directions used to establish. Indicate type of monument found or set and sign post.

August 1851 - James M. Marsh set original post. BT's: 10" Hemlock S18°E, 27 links; 11" Hemlock S07°W, 58 links; 12" Hemlock, N22°W, 7 links; 12" Hemlock N60°E 20 links.

September 25, 1987 - R. C. Wylie used data provided by Bill Stuth, retired surveyor of Owens Illinois Co., to relocate this corner from the Northeast corner of Section 7, T.34N., R.5E. Bill Stuth claims he found a tip of a wood post when he set this corner, which was subsequently destroyed. He set a 1-1/2" iron pipe using angles and distances provided by Stuth BT's: 8.9" Sugar Maple S47°E, 89.29'; 12.3" Sugar Maple N16°W, 32.93'; 9.0" Sugar Maple N63°E 63.34'; Roofing Nail in power pole North, 7.60'; See Plat of Survey dated August 1990, Lincoln County Land Information Office Map Number S110-D.

April 2, 1991 - Wisconsin Department of Transportation found a 1" iron pipe and tied out corner using 2 yellow capped rebar right-of-way corners and set two 5/8" by 24" rebar with red plastic D.O.T. caps for witness corners.

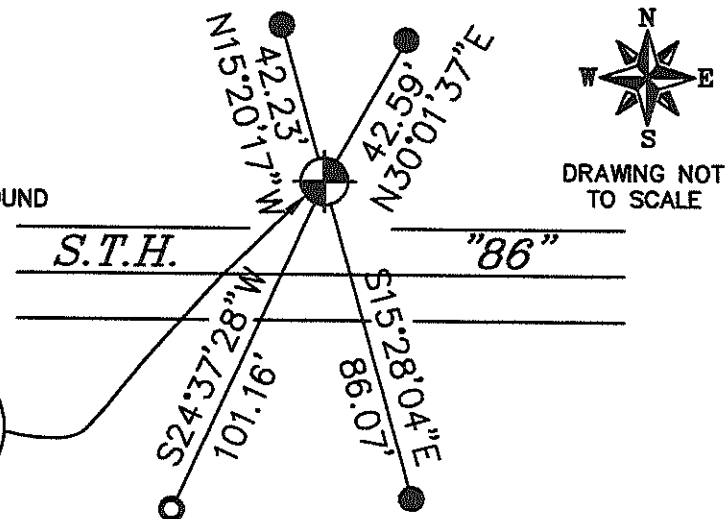
April 12, 2005 - Matthew E. Hogle, subcontractor for the Plat of Survey by Stephen J. Favorite dated January 25, 2005, Lincoln County Land Information Office Map Number L396B. We looked for Wylie's iron pipe, but couldn't find it. We set a Lincoln County Berntsen Monument from 3 of the existing DOT ties from 1991 and set 1 new witness corner as shown below.

(c)(d)(e) Plan view of corner with ties to at least 4 witness monuments. If in disagreement with previously established corner, show the distances between the two corners and also indicate the ties to the disputed corner.

### Legend

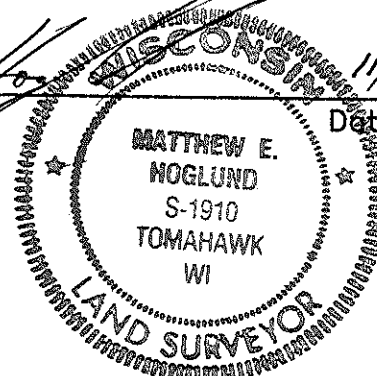
- 7/8" x 30" IRON REBAR WITH ALUMINUM CAP SET
- 5/8" CAPPED IRON REBAR FOUND
- LINCOLN COUNTY BERNTSEN MONUMENT SET

Corner Stamped



(i) I, Matthew E. Hogle, certify that the corner location on this record was determined by me under my direction and control and that this U.S. Public Land Survey Monument is correct and complete to the best of my knowledge and belief.

Matthew E. Hogle  
Signature Date 11/3/2008



RECEIVED BY LINCOLN COUNTY SURVEYOR THIS 4TH DAY OF November 20 08  
Tony Dall  
COUNTY SURVEYOR

E-25

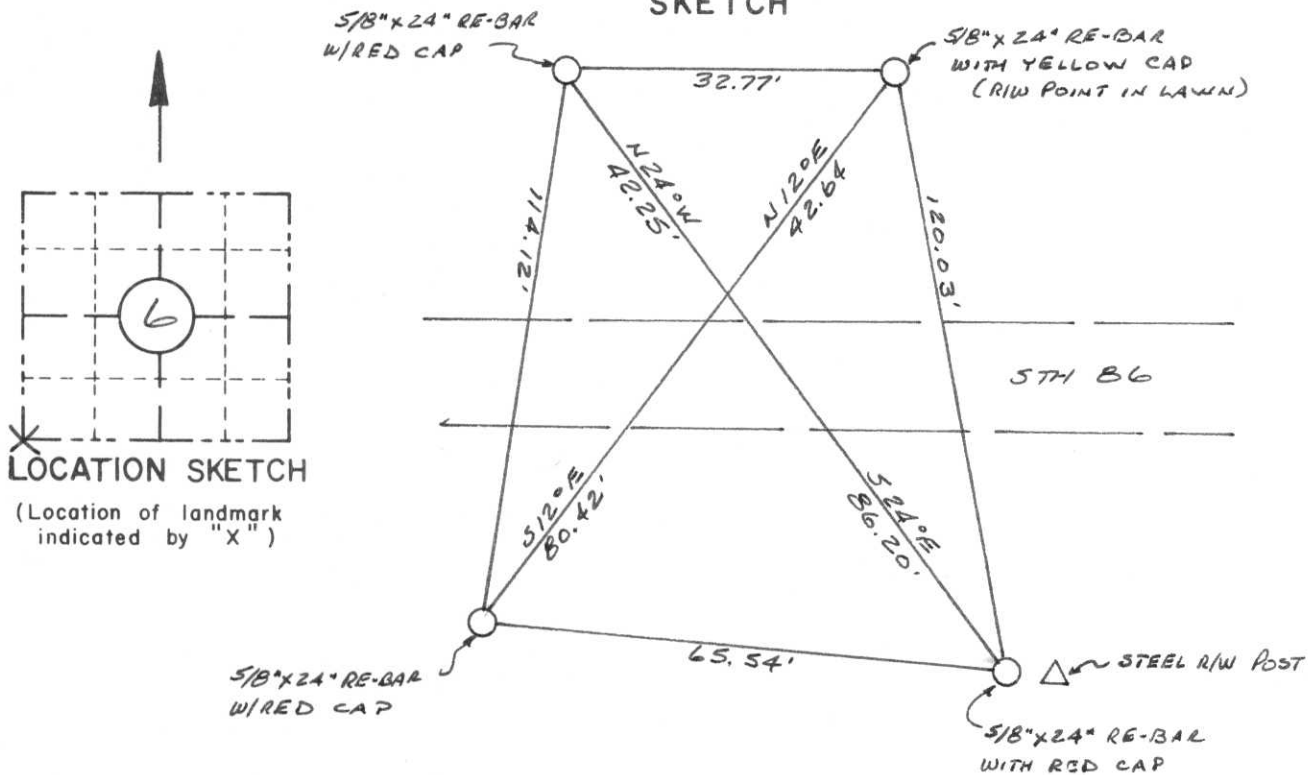
RECORD AND CERTIFICATION OF U.S. PUBLIC LAND SURVEY CONTROL STATION

State of Wisconsin / Department of Transportation

E-D-716-72

District 7	Project I. D. 9215-06-00	Located by R.B. JOHNSON - SURVEY CREW CHIEF			
Corner S.W. COR	SECTION 6	Township 34 N	Range (E,W) SE	County LINCOLN	
Wisconsin Coordinates CORNER	East (X) 2,020,937.82	North (Y) 590,896.60	Elevation (Z)	Zone C	
Control Station Name	East (X)	North (Y)	Elevation (Z)	Zone	
Horizontal —	NORTH AMERICAN, 1927	CONTROL DATUM	Vertical — MEAN SEA LEVEL, 1929 ADJUSTMENT		
Horizontal —	2 <sup>ND</sup> Order	SURVEY CONTROL	Vertical — _____ Order		

SKETCH



LOCATION SKETCH  
(Location of landmark indicated by "X")

I hereby certify that on the 2<sup>ND</sup> day of APRIL 1991, that I did locate the above corner which was evidenced by 3/4" IRON PIPE; I further certify that to perpetuate the location of such corner I did, at the exact location thereof, place a permanent marker consisting of \_\_\_\_\_

\_\_\_\_\_ ; I further certify that I did establish 4 references or witness monuments consisting of 5/8" x 24" RE-BARS WITH D.O.T. PLASTIC CAPS

\_\_\_\_\_ located as shown above:

SEAL

Signature Registered Land Surveyor	Registration No. S--	Title
------------------------------------	-------------------------	-------

CORNER  
SECTION  
6  
TOWN  
34 N  
RANGE  
SE

RECEIVED JUN 18 1991

NE Sec 12  
T34N R4E

State of Wisconsin / Department of Transportation

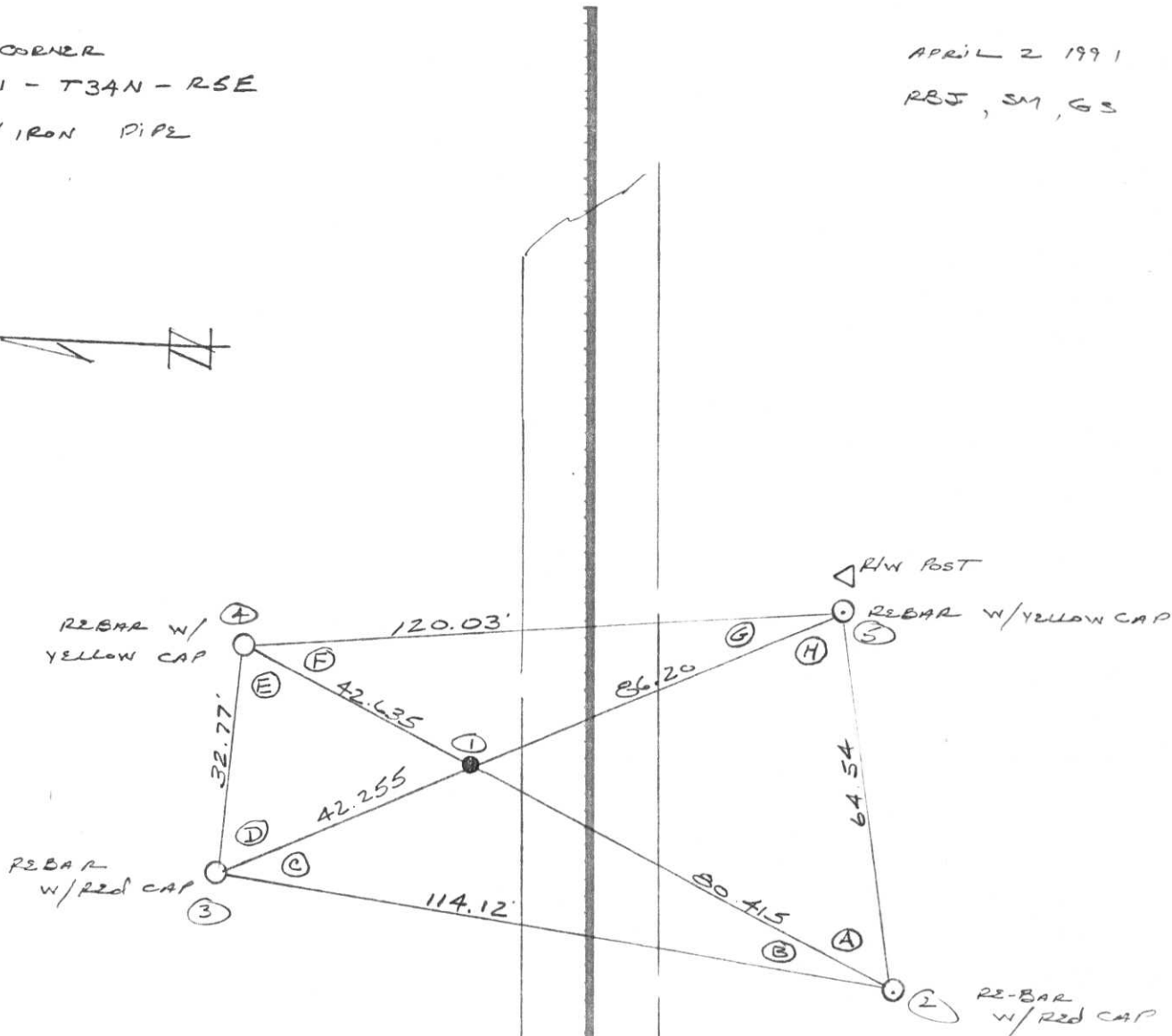
FIELD SURVEY NOTES

E-D-702 6-70

APRIL 2 1991

RBJ, SM, GS

CORNER  
E1 - T34N - R5E  
1" IRON PIPE



STH 82

ANGLES:

- A = 72° 02' 05"
- B = 15° 17' 28"
- C = 30° 07' 30"
- D = 67° 54' 17"
- E = 66° 40' 44"
- F = 30° 45' 44"
- G = 14° 39' 14"
- H = 62° 32' 56"

ANGLES AT CORNER FROM 3 TO 5 AND 2 TO 4 ARE 180°

	X	DIST.
1-2	0	80.415
1-3	134 35 02	42.255
1-4	179 59 59	42.635
1-5	314 35 02	86.20

TOPOGRAPHY

SURVEY ALIGNMENT

FIELD SURVEY NOTES

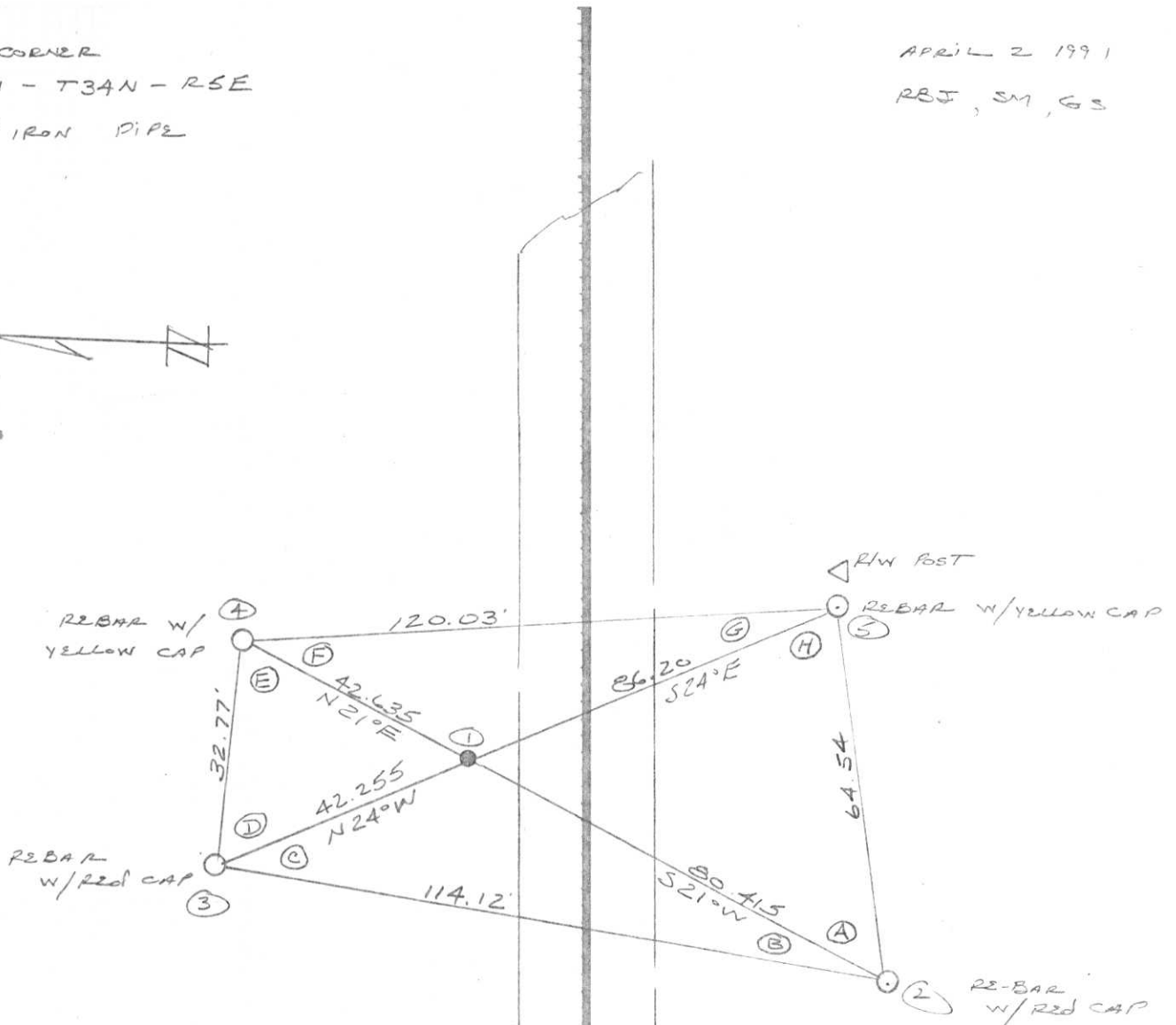
E-D-702 6-70

State of Wisconsin | Department of Transportation

CORNER  
E1 - T34N - R5E  
1" IRON PIPE

APRIL 2 1991

RBJ, SM, GS



	X	DIST.
1-2	0	80.415
1-3	134 35 02	42.255
1-4	179 59 59	42.635
1-5	314 35 02	86.20

- ANGLES:
- A = 72° 02' 05"
  - B = 15° 17' 28"
  - C = 30° 07' 30"
  - D = 67° 54' 17"
  - E = 66° 40' 44"
  - F = 30° 45' 44"
  - G = 14° 39' 14"
  - H = 62° 32' 56"

ANGLES AT CORNER FROM 3 TO 5 AND 2 TO 4 ARE 180°

- TOPOGRAPHY
- SURVEY ALIGNMENT

CONVENTIONAL ALIGNMENT

TOPOGRAPHY



SET BY RAIN

Found EXISTING REF MONUMENTS

CORNER E1 T34N-R6E

4-9-51

EAD-702 6-70

FIELD SURVEY NOTES

RECEIVED JUN 18 1991

State of Wisconsin / Department of Transportation

NE Corner Sec 12  
T34N R5E

E-1

# U.S. PUBLIC LAND SURVEY MONUMENT RECORD

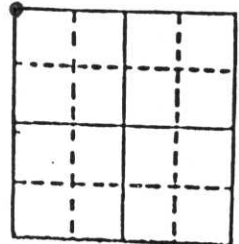
Note: This form is intended and designed to fulfill all requirements of Wisconsin Administrative Code, Chapter A-E 5.02, U.S. Public Land Survey Monument Record (3) (a) (b) (c) (d) (e) (f) (g) (h) (i). An additional sheet may be added if necessary to conform with said requirements.

(a) Corner location: Township 34 North

Range 5 East

Town Tomahawk

County Lincoln

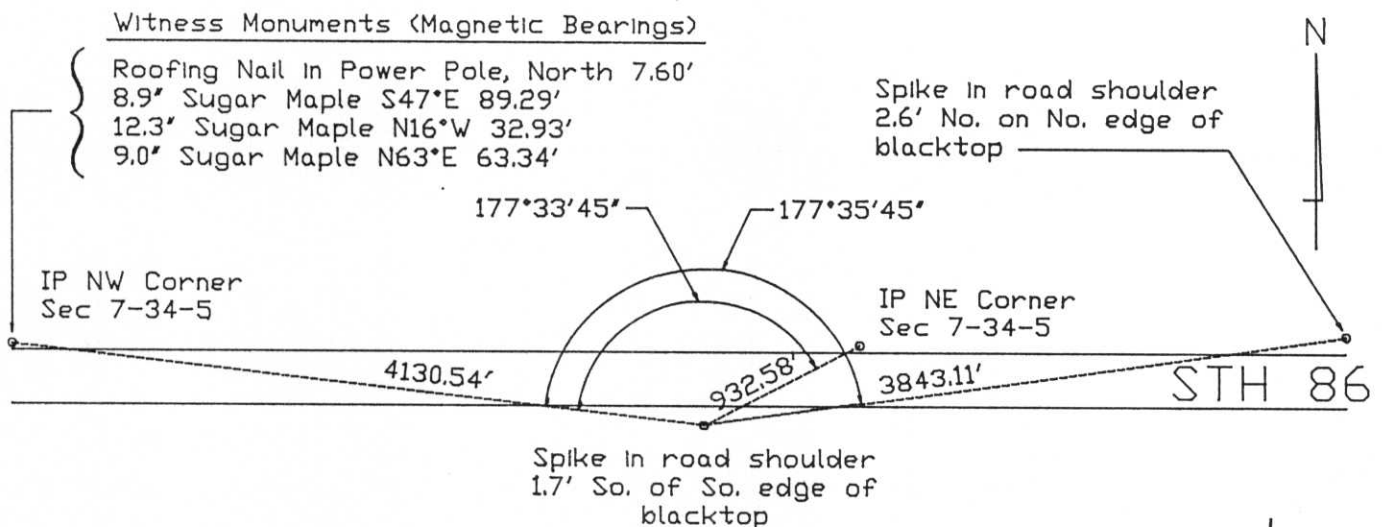


Section 7

b) (f) (g) (h) Description of monument found at this corner and if it was accepted, state all evidence (material, testimonial, occupational, plats, records, other monuments) used as a basis for accepting. If not accepted or if nothing was found, state evidence used as basis for establishing location. If reestablished through lost corner proportionate methods, indicate all monuments, distances and directions used to establish.

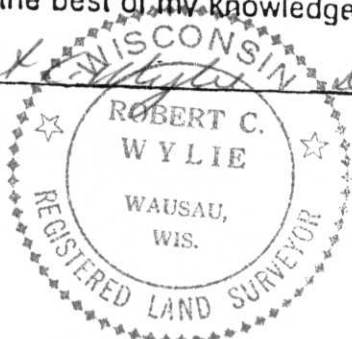
No monument found. Corner previously reestablished by Wm. Stuth in 1972 who found the tip of a wood post at the location identified by local officials and adjacent landowners. He preserved the corner by placing an iron pipe which was later destroyed. The corner was reestablished by placing a 1" iron pipe by reference to several traverse stations previously set by Stuth, and a section corner which were recovered. See references below.

c) (d) (e) Plan view of corner with ties to at least 4 witness monuments. If in disagreement with previously established corner, show the distances between the two corners and also indicate the ties to the disputed corner.



(i) I, Robert C. Wylie, RLS-66  
(Type or print name) certify that the corner location on this record was determined by me or under my direction and control and that this U.S. Public Land Survey Monument Record is correct and complete to the best of my knowledge and belief.

Robert C. Wylie Signature Dec 27, 1988 Date



Index No. E-1