

U.S. PUBLIC LAND SURVEY MONUMENT RECORD

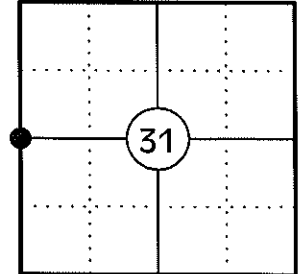
NOTE: THIS FORM IS INTENDED AND DESIGNED TO FULFILL ALL REQUIREMENTS OF WISCONSIN ADMINISTRATIVE CODE CHAPTER A-E 7.08 U.S. PUBLIC LAND SURVEY MONUMENT RECORD (3) (a)(b)(c)(d)(e)(f)(g)(h)(i). AN ADDITIONAL SHEET MAY BE ADDED IF NECESSARY TO CONFIRM WITH SAID REQUIREMENTS.

(a) CORNER LOCATION:

WEST 1/4 CORNER OF SECTION 31
 TOWNSHIP 34 NORTH
 RANGE 4 EAST
 TOWN OF TOMAHAWK
 COUNTY OF LINCOLN

LINCOLN COUNTY COORDINATES:

N: 198757.12
 E: 301610.92



(b) HISTORY OF ORIGINAL CORNER:

ORIGINAL SURVEYOR: ALEX ANDERSON
 DATE OF SURVEY: JULY 1864

ORIGINAL BEARING TREES: 9" HEMLOCK - N30°W, 7 LKS
 8" HEMLOCK - S75°E, 7 LKS

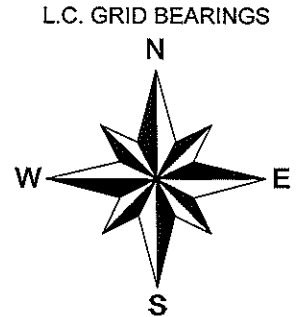
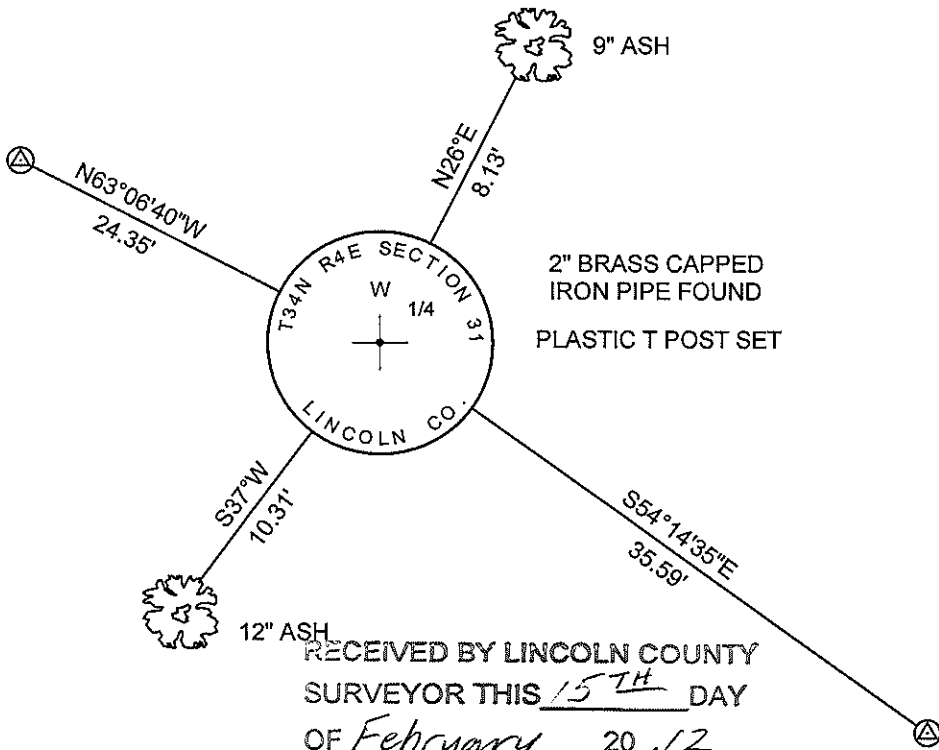
(f)(g)(h) DESCRIPTION OF MONUMENT FOUND AT THIS CORNER AND IF IT WAS ACCEPTED STATE ALL EVIDENCE (MATERIAL, TESTIMONIAL, OCCUPATIONAL, PLATS, RECORDS, OTHER MONUMENTS) USED AS A BASIS FOR ESTABLISHING LOCATION. IF REESTABLISHING THROUGH LOST CORNER PROPORTIONATE METHODS, INDICATE ALL MONUMENTS, DISTANCES, AND DIRECTIONS USED TO ESTABLISH. INDICATE TYPE OF MONUMENT AND SIGN POST FOUND OR SET.

1864: ALEX ANDERSON SET THE ORIGINAL 1/4 CORNER POST.

01/25/1985: WILLIAM IMMICH OF GENISOT AND ASSOCIATES, INC SET A 2" BRASS CAPPED IRON PIPE MIDWAY AND ONLINE BETWEEN THE SECTION CORNERS TO THE NORTH AND SOUTH AND MADE 3 BEARING TREES (LC MAP S88A)

02/02/2012: I FOUND A 2" BRASS CAPPED IRON PIPE STAMPED TO IDENTIFY THE CORNER AND TWO OF IMMICH'S BEARING TREES IN GOOD CONDITION. I SET A NAIL IN THE SIDE OF EACH BEARING TREE AND TOOK NEW MEASUREMENTS AND SET TWO 3/4" DIA. IRON REBAR WITH ALUMINUM CAPS TO WITNESS THE CORNER.

(c)(d)(e) PLAN VIEW OF CORNER WITH TIES TO AT LEAST FOUR WITNESSES. IF IN DISAGREEMENT WITH PREVIOUSLY ESTABLISHED CORNER, SHOW THE DISTANCES BETWEEN THE TWO CORNERS AND ALSO INDICATE THE TIE TO THE DISPUTED CORNER.



⊗ 3/4" X 30" IRON REBAR WITH LINCOLN CO. ALUM. CAP SET

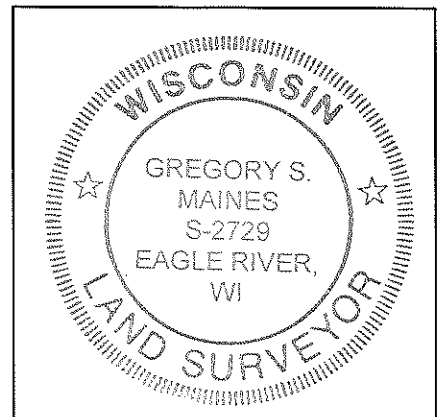
SKETCH IS NOT TO SCALE
 DISTANCES TO BT'S ARE TO NAIL IN SIDE

RECEIVED BY LINCOLN COUNTY
 SURVEYOR THIS 15TH DAY
 OF February 20, 12
Tommy Dahl
 COUNTY SURVEYOR

CERTIFICATION

I GREGORY S. MAINES, REGISTERED LAND SURVEYOR NO. 2729, HEREBY CERTIFY THAT THE CORNER LOCATION ON THIS RECORD WAS REFERENCED BY ME OR UNDER MY DIRECTION AND CONTROL AND THAT THIS U.S. PUBLIC LAND SURVEY MONUMENT RECORD IS COMPLETE TO THE BEST OF MY KNOWLEDGE AND BELIEF.

Gregory S. Maines 2/02/2012
 SIGNATURE



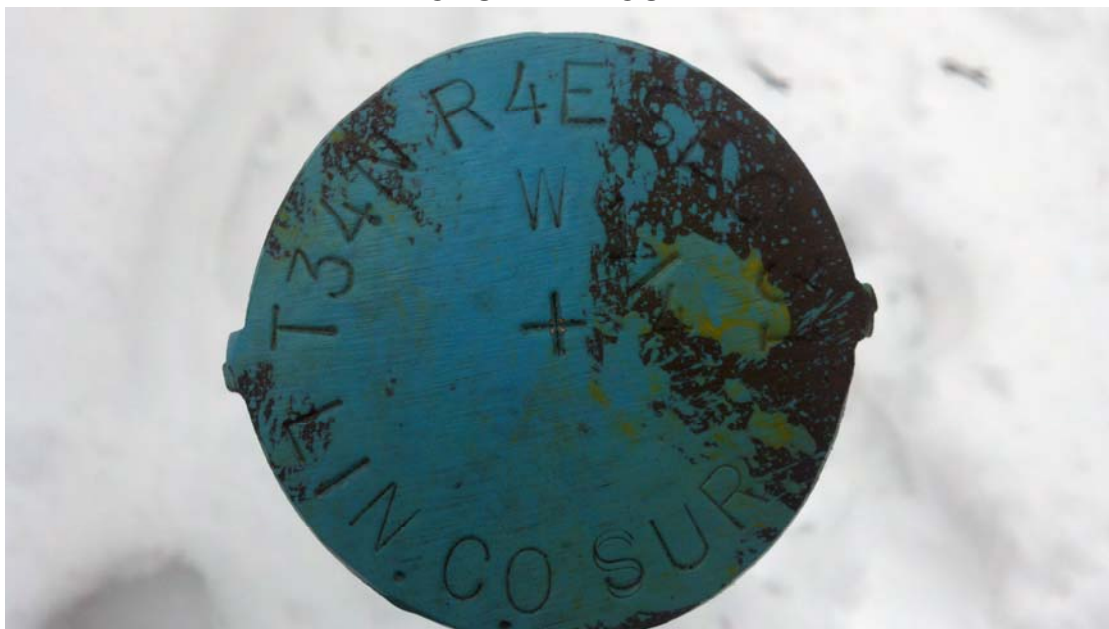
INDEX NO. W-1

WEST 1/4 CORNER - SECTION 31, T 34 N, R 4 E

OVERVIEW



MONUMENT FOUND



FACING NORTH



WEST 1/4 CORNER - SECTION 31, T 34 N, R 4 E

FACING EAST



FACING SOUTH



FACING WEST

