

U.S. PUBLIC LAND SURVEY MONUMENT RECORD

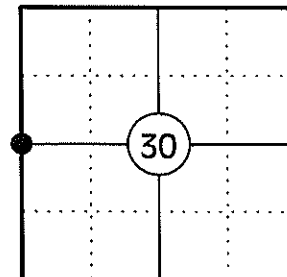
NOTE: THIS FORM IS INTENDED AND DESIGNED TO FULFILL ALL REQUIREMENTS OF WISCONSIN ADMINISTRATIVE CODE CHAPTER A-E 7.08 U.S. PUBLIC LAND SURVEY MONUMENT RECORD (3) (a)(b)(c)(d)(e)(f)(g)(h)(i). AN ADDITIONAL SHEET MAY BE ADDED IF NECESSARY TO CONFIRM WITH SAID REQUIREMENTS.

(a) CORNER LOCATION:

WEST 1/4 CORNER OF SECTION 30
 TOWNSHIP 34 NORTH
 RANGE 4 EAST
 TOWN OF TOMAHAWK
 COUNTY OF LINCOLN

LINCOLN COUNTY COORDINATES:

N: 204009.84
 E: 301589.83



(b) HISTORY OF ORIGINAL CORNER:

ORIGINAL SURVEYOR: ALEX ANDERSON
 DATE OF SURVEY: JULY 1864

ORIGINAL BEARING TREES: 9" BIRCH - N42°W, 25 LKS
 24" BIRCH - S28°E, 31 LKS

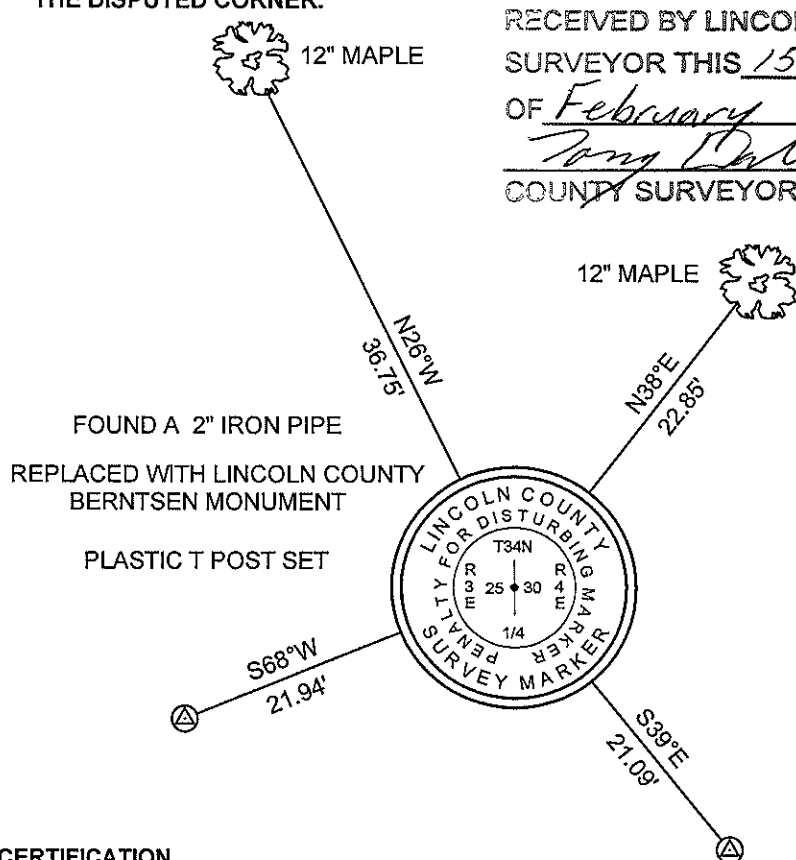
(f)(g)(h) DESCRIPTION OF MONUMENT FOUND AT THIS CORNER AND IF IT WAS ACCEPTED STATE ALL EVIDENCE (MATERIAL, TESTIMONIAL, OCCUPATIONAL, PLATS, RECORDS, OTHER MONUMENTS) USED AS A BASIS FOR ESTABLISHING LOCATION. IF REESTABLISHING THROUGH LOST CORNER PROPORTIONATE METHODS, INDICATE ALL MONUMENTS, DISTANCES, AND DIRECTIONS USED TO ESTABLISH. INDICATE TYPE OF MONUMENT AND SIGN POST FOUND OR SET.

1864: ALEX ANDERSON SET THE ORIGINAL 1/4 CORNER POST.

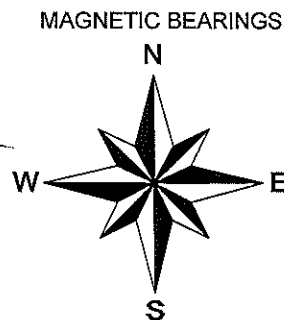
10/24/1973: OWENS - ILLINOIS SHOWS AN IRON PIPE AND TWO BEARING TREES AT THE CORNER LOCATION ON THEIR SURVEY OF SECTION 25, T34N, R03E. (MAP ON FILE AT THE LINCOLN AND PRICE COUNTY SURVEYOR'S OFFICES)

01/31/2012: I FOUND A 2" DIA. IRON PIPE AT THE CORNER LOCATION. I REPLACED THE IRON PIPE WITH A LINCOLN COUNTY BERNTSEN MONUMENT, MADE TWO BEARING TREES AND SET TWO 3/4" DIA. IRON REBAR WITH ALUMINUM CAPS TO WITNESS THE CORNER.

(c)(d)(e) PLAN VIEW OF CORNER WITH TIES TO AT LEAST FOUR WITNESSES. IF IN DISAGREEMENT WITH PREVIOUSLY ESTABLISHED CORNER, SHOW THE DISTANCES BETWEEN THE TWO CORNERS AND ALSO INDICATE THE TIE TO THE DISPUTED CORNER.

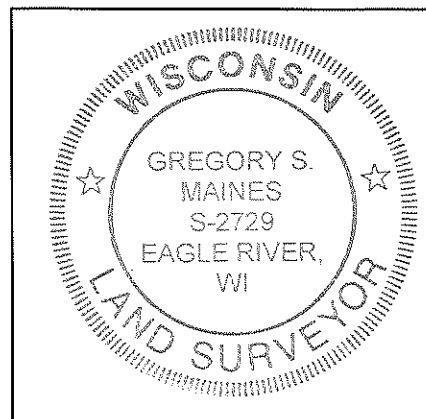


RECEIVED BY LINCOLN COUNTY SURVEYOR THIS 15TH DAY OF February 20 12
Tony D...
 COUNTY SURVEYOR



⊕ 3/4" X 30" IRON REBAR WITH LINCOLN CO. ALUM. CAP SET

SKETCH IS NOT TO SCALE
 DISTANCES TO BT'S ARE TO NAIL IN SIDE



INDEX NO. 5-1

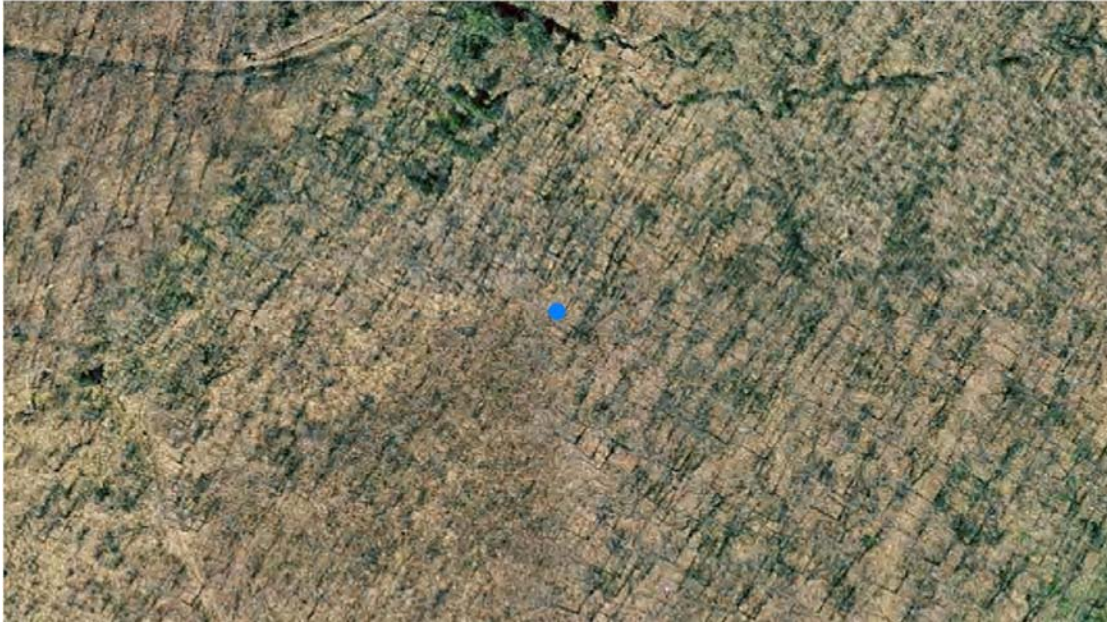
CERTIFICATION

I GREGORY S. MAINES, REGISTERED LAND SURVEYOR NO. 2729, HEREBY CERTIFY THAT THE CORNER LOCATION ON THIS RECORD WAS REFERENCED BY ME OR UNDER MY DIRECTION AND CONTROL AND THAT THIS U.S. PUBLIC LAND SURVEY MONUMENT RECORD IS COMPLETE TO THE BEST OF MY KNOWLEDGE AND BELIEF.

Gregory S. Maines 1/31/12
 SIGNATURE

WEST CORNER - SECTION 30, T 34 N, R 4 E

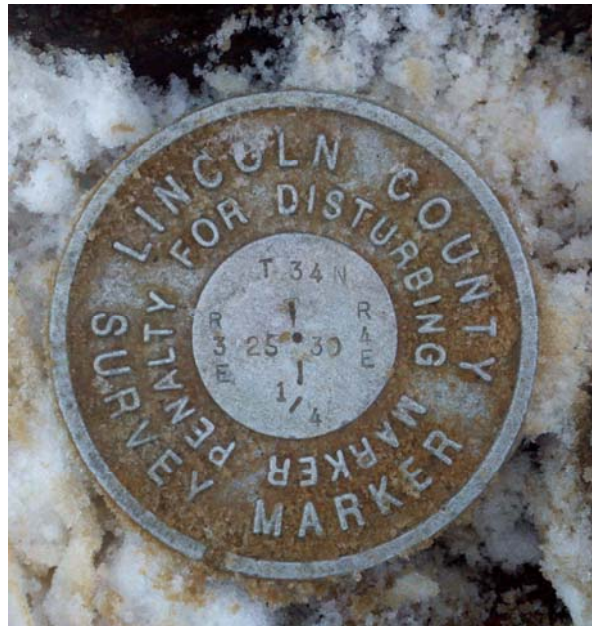
OVERVIEW



MONUMENT FOUND



MONUMENT SET



FACING NORTH



WEST CORNER - SECTION 30, T 34 N, R 4 E

FACING EAST



FACING SOUTH



FACING WEST

