

# U.S. PUBLIC LAND SURVEY MONUMENT RECORD

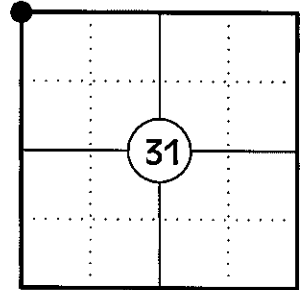
NOTE: THIS FORM IS INTENDED AND DESIGNED TO FULFILL ALL REQUIREMENTS OF WISCONSIN ADMINISTRATIVE CODE CHAPTER A-E 7.08 U.S. PUBLIC LAND SURVEY MONUMENT RECORD (3) (a)(b)(c)(d)(e)(f)(g)(h)(i). AN ADDITIONAL SHEET MAY BE ADDED IF NECESSARY TO CONFIRM WITH SAID REQUIREMENTS.

**(a) CORNER LOCATION:**

NORTHWEST CORNER OF SECTION 31  
 TOWNSHIP 34 NORTH  
 RANGE 4 EAST  
 TOWN OF TOMAHAWK  
 COUNTY OF LINCOLN

**LINCOLN COUNTY COORDINATES:**

N: 201381.61  
 E: 301586.89



**(b) HISTORY OF ORIGINAL CORNER:**

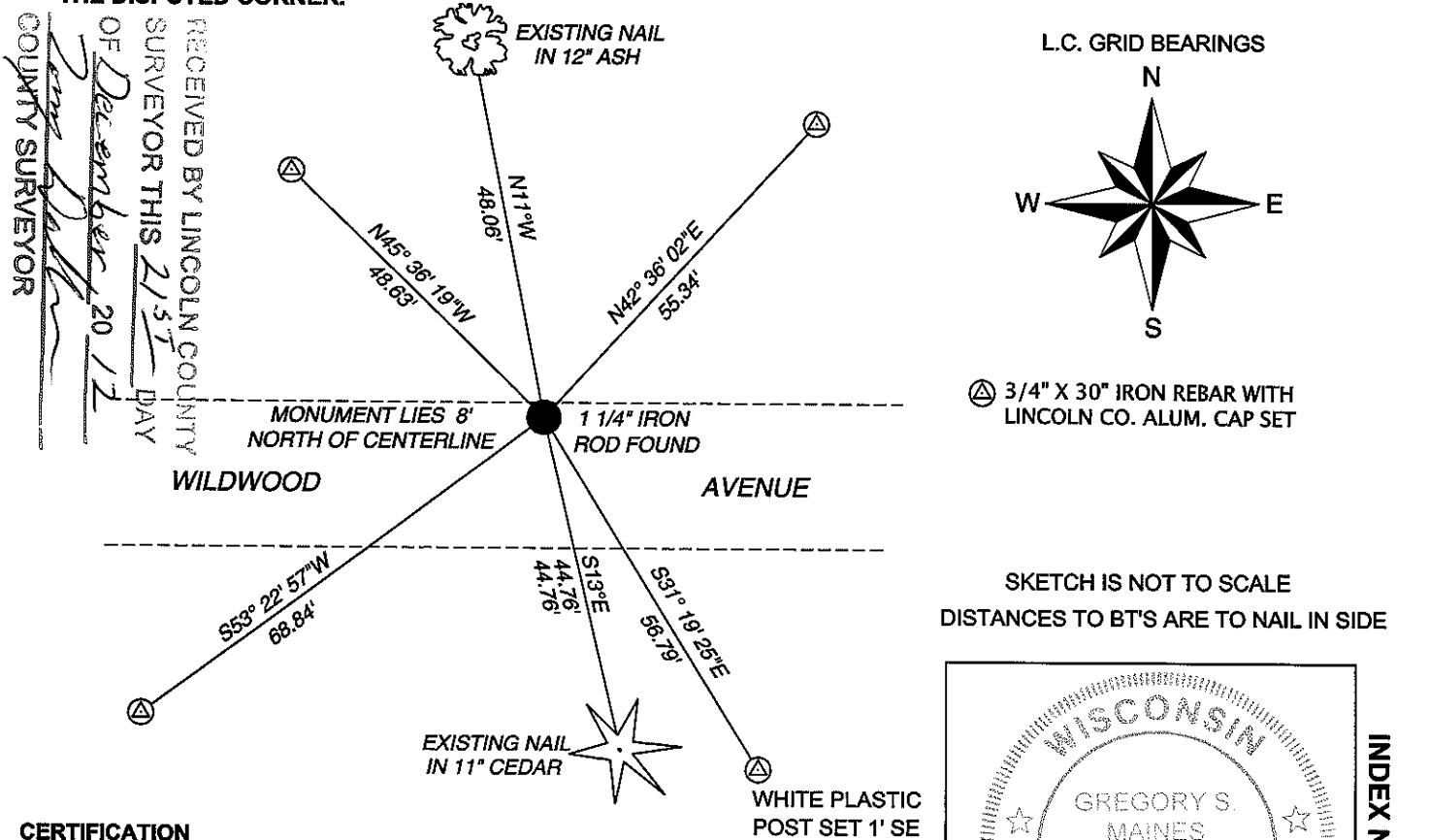
ORIGINAL SURVEYOR: ALEX ANDERSON  
 DATE OF SURVEY: JULY 1864

ORIGINAL BEARING TREES: 7" BLACK ASH - S88°W, 6 LKS  
 12" BLACK ASH - N48°E, 42 LKS  
 10" BIRCH - S32°E, 11 LKS  
 10" BIRCH - N01°W, 39 LKS

**(f)(g)(h) DESCRIPTION OF MONUMENT FOUND AT THIS CORNER AND IF IT WAS ACCEPTED STATE ALL EVIDENCE (MATERIAL, TESTIMONIAL, OCCUPATIONAL, PLATS, RECORDS, OTHER MONUMENTS) USED AS A BASIS FOR ESTABLISHING LOCATION. IF REESTABLISHING THROUGH LOST CORNER PROPORTIONATE METHODS, INDICATE ALL MONUMENTS, DISTANCES, AND DIRECTIONS USED TO ESTABLISH. INDICATE TYPE OF MONUMENT AND SIGN POST FOUND OR SET.**

- 1864: ALEX ANDERSON SET THE ORIGINAL SECTION CORNER POST.
- 01/25/1985: WILLIAM IMMICH OF GENISOT AND ASSOCIATES, INC FOUND A GRANITE MOONUMENT AND MADE 3 BEARING TREES (LC MAP S88A) [BT'S: 10" MAPLE - S40°W, 52.8'; 10" CEDAR - S14°E, 45.12' ; 10" ASH - N10°W, 45.15'
- 02/26/1997: LESTER SCHMIT SHOWS THE CORNER AS A FOUND 6" X 6" RED GRANITE MONUMENT (L.C. MAP L216A).
- 10/29/2012: I FOUND A 1 1/4" IRON ROD 2 FEET BELOW THE GRAVEL ROAD. THIS LOCATION MATCHES THAT OF WILLIAM IMMICH AND LESTER SCHMIDTS MAPS. I ACCEPTED THIS MONUMENT AS THE CORNER AND SET FOUR REFERENCE MONUMENTS TO WITNESS THE CORNER.

**(c)(d)(e) PLAN VIEW OF CORNER WITH TIES TO AT LEAST FOUR WITNESSES. IF IN DISAGREEMENT WITH PREVIOUSLY ESTABLISHED CORNER, SHOW THE DISTANCES BETWEEN THE TWO CORNERS AND ALSO INDICATE THE TIE TO THE DISPUTED CORNER.**



**CERTIFICATION**

I GREGORY S. MAINES, REGISTERED LAND SURVEYOR NO. 2729, HEREBY CERTIFY THAT THE CORNER LOCATION ON THIS RECORD WAS REFERENCED BY ME OR UNDER MY DIRECTION AND CONTROL AND THAT THIS U.S. PUBLIC LAND SURVEY MONUMENT RECORD IS COMPLETE TO THE BEST OF MY KNOWLEDGE AND BELIEF.

*Gregory S. Maines*  
 SIGNATURE

