

U.S. PUBLIC LAND SURVEY MONUMENT RECORD

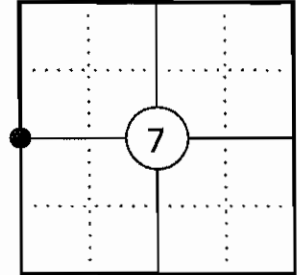
NOTE: THIS FORM IS INTENDED AND DESIGNED TO FULFILL ALL REQUIREMENTS OF WISCONSIN ADMINISTRATIVE CODE CHAPTER A-E 7.08 U.S. PUBLIC LAND SURVEY MONUMENT RECORD (3) (a)(b)(c)(d)(e)(f)(g)(h)(i). AN ADDITIONAL SHEET MAY BE ADDED IF NECESSARY TO CONFIRM WITH SAID REQUIREMENTS.

(a) CORNER LOCATION:

WEST 1/4 CORNER OF SECTION 7
 TOWNSHIP 34 NORTH
 RANGE 4 EAST
 TOWN OF TOMAHAWK
 COUNTY OF LINCOLN

LINCOLN COUNTY COORDINATES:

N: 219798.43
 E: 301597.47



(b) HISTORY OF ORIGINAL CORNER:

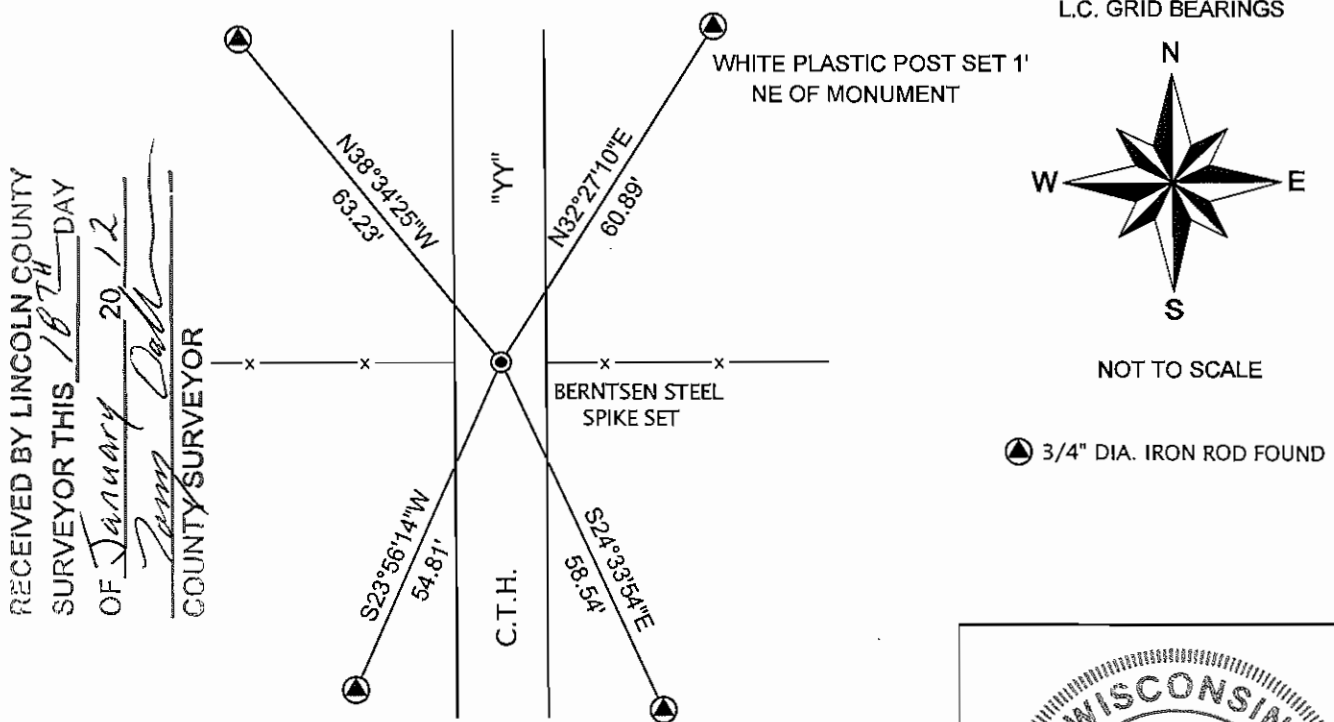
ORIGINAL SURVEYOR: ALEX ANDERSON
 DATE OF SURVEY: JULY 1864

ORIGINAL BEARING TREES: 15" BIRCH - N12°W, 22 LKS
 10" BIRCH - N39°E, 22 LKS

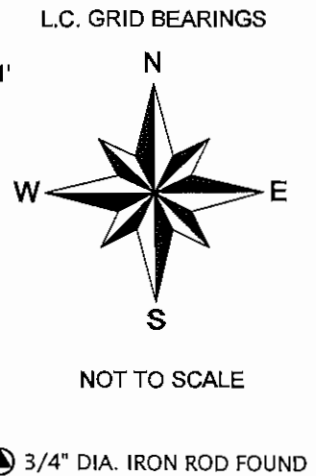
(f)(g)(h) DESCRIPTION OF MONUMENT FOUND AT THIS CORNER AND IF IT WAS ACCEPTED STATE ALL EVIDENCE (MATERIAL, TESTIMONIAL, OCCUPATIONAL, PLATS, RECORDS, OTHER MONUMENTS) USED AS A BASIS FOR ESTABLISHING LOCATION. IF REESTABLISHING THROUGH LOST CORNER PROPORTIONATE METHODS, INDICATE ALL MONUMENTS, DISTANCES, AND DIRECTIONS USED TO ESTABLISH. INDICATE TYPE OF MONUMENT AND SIGN POST FOUND OR SET.

- 1864: ALEX ANDERSON SET THE ORIGINAL 1/4 SECTION CORNER POST.
- 08/1909: JOHNSON SHOWS A 1" IRON BAR 24" LONG AT THE CORNER LOCATION AND AN ORIGINAL B.T. STUB AS WELL AS A DISTANCE OF 39.96 CH. TO THE SECTION CORNER TO THE NORTH. (PRICE COUNTY FB 13-20 & SD 12 34 3E)
- 01/03/2001: RANDY ERICKSON POSITIONED THE CORNER AT THE INTERSECTION OF THE CENTERLINE OF CTH "YY" WITH FENCE LINES RUNNING EAST AND WEST. CORNER LOCATION WAS SUPPORTED BY TESTIMONIAL EVIDENCE FROM ADJACENT PROPERTY OWNERS. HE SET A RR SPIKE AT THE CORNER AND SET FOUR IRON MONUMENTS AND MADE 4 B.T.'S TO WITNESS THE CORNER. (PRICE COUNTY CORNER FORM N3342, E0300)
- 01/05/2012 I FOUND ALL OF ERICKSON'S WITNESS BUT THE RR SPIKE APPEARS TO HAVE BEEN PAVED OVER. I POSITION THE CORNER FROM ERICKSON'S FOUR IRON MONUMENTS (3/4" DIA. IRON RODS). I SET A BERNTSEN STEEL SPIKE TO MONUMENT THE CORNER. I TOOK NEW MEASUREMENTS TO THE EXISTING IRON MONUMENTS AS SHOWN BELOW.

(c)(d)(e) PLAN VIEW OF CORNER WITH TIES TO AT LEAST FOUR WITNESSES. IF IN DISAGREEMENT WITH PREVIOUSLY ESTABLISHED CORNER, SHOW THE DISTANCES BETWEEN THE TWO CORNERS AND ALSO INDICATE THE TIE TO THE DISPUTED CORNER.



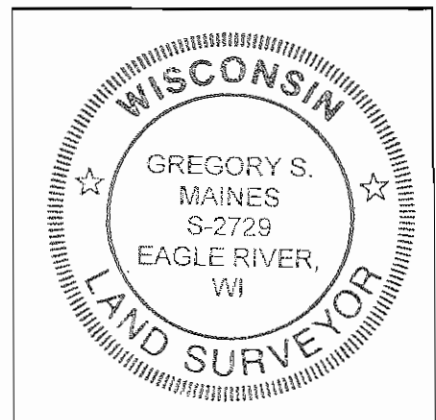
RECEIVED BY LINCOLN COUNTY
 SURVEYOR THIS 18TH DAY
 OF January 20 12
[Signature]
 COUNTY SURVEYOR



CERTIFICATION

I GREGORY S. MAINES, REGISTERED LAND SURVEYOR NO. 2729, HEREBY CERTIFY THAT THE CORNER LOCATION ON THIS RECORD WAS REFERENCED BY ME OR UNDER MY DIRECTION AND CONTROL AND THAT THIS U.S. PUBLIC LAND SURVEY MONUMENT RECORD IS COMPLETE TO THE BEST OF MY KNOWLEDGE AND BELIEF.

[Signature] 1/05/12
 SIGNATURE



INDEX NO. G-1

WEST ¼ CORNER – SECTION 7, T 34 N, R 4 E

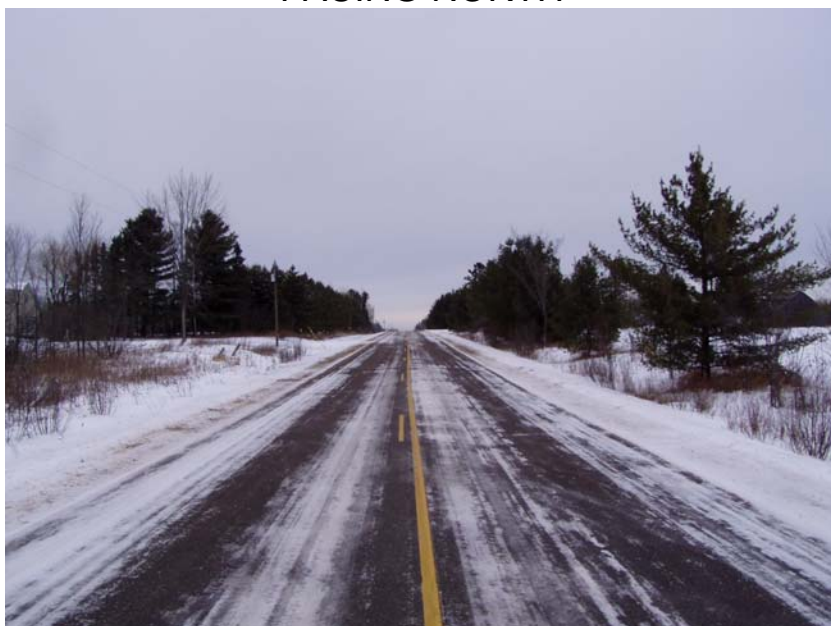
OVERVIEW



MONUMENT



FACING NORTH



WEST ¼ CORNER – SECTION 7, T 34 N, R 4 E

FACING EAST



FACING SOUTH



FACING WEST

