

U.S. PUBLIC LAND SURVEY MONUMENT RECORD

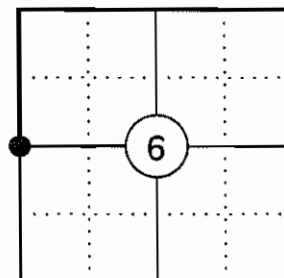
NOTE: THIS FORM IS INTENDED AND DESIGNED TO FULFILL ALL REQUIREMENTS OF WISCONSIN ADMINISTRATIVE CODE CHAPTER A-E 7.08 U.S. PUBLIC LAND SURVEY MONUMENT RECORD (3) (a)(b)(c)(d)(e)(f)(g)(h)(i). AN ADDITIONAL SHEET MAY BE ADDED IF NECESSARY TO CONFIRM WITH SAID REQUIREMENTS.

(a) CORNER LOCATION:

WEST 1/4 CORNER OF SECTION 6
 TOWNSHIP 34 NORTH
 RANGE 4 EAST
 TOWN OF TOMAHAWK
 COUNTY OF LINCOLN

LINCOLN COUNTY COORDINATES:

N: 225077.31
 E: 301596.05



(b) HISTORY OF ORIGINAL CORNER:

ORIGINAL SURVEYOR: ALEX ANDERSON
 DATE OF SURVEY: JULY 1864

ORIGINAL BEARING TREES: 10" HEMLOCK - N22°W, 20 LKS
 10" HEMLOCK - N10°E, 7 LKS

(f)(g)(h) DESCRIPTION OF MONUMENT FOUND AT THIS CORNER AND IF IT WAS ACCEPTED STATE ALL EVIDENCE (MATERIAL, TESTIMONIAL, OCCUPATIONAL, PLATS, RECORDS, OTHER MONUMENTS) USED AS A BASIS FOR ESTABLISHING LOCATION. IF REESTABLISHING THROUGH LOST CORNER PROPORTIONATE METHODS, INDICATE ALL MONUMENTS, DISTANCES, AND DIRECTIONS USED TO ESTABLISH. INDICATE TYPE OF MONUMENT AND SIGN POST FOUND OR SET.

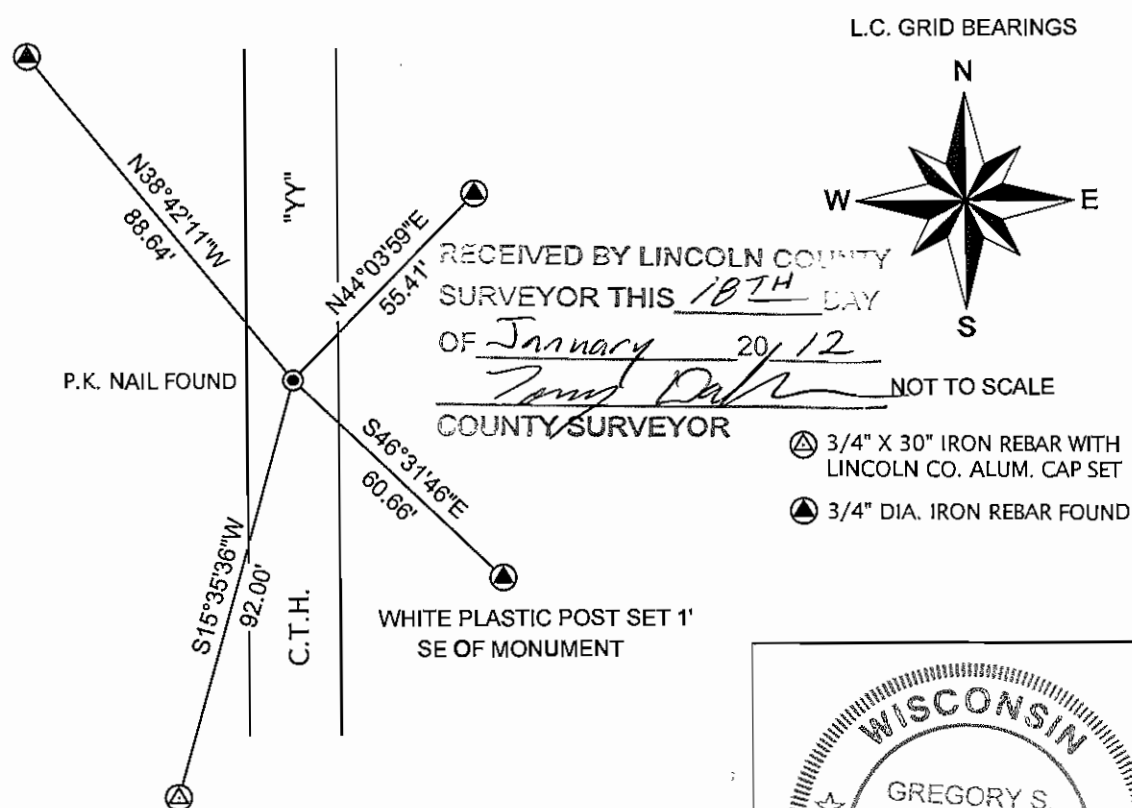
1864: ALEX ANDERSON SET THE ORIGINAL 1/4 SECTION CORNER POST.

06/1924: ROBERT JAKOUBEK SHOWS A CEMENT MONUMENT WITH WITNESSES AT THE CORNER LOCATION AND DISTANCES TO THE SECTION CORNERS NORTH AND SOUTH. (PRICE COUNTY SD 01-34-03E & L0156)

02/28/2008: ALBERT SIMPSON FOUND NO EVIDENCE OF JAKOUBEK'S CEMENT MONUMENT OR WITNESSES. HE POSITIONED CORNER IN THE CENTERLINE OF CTH "YY" AT JAKOUBEK'S DISTANCE OF 34.92 CHS (2304.72') FROM THE SECTION CORNER TO THE NORTH. THIS POSITION WAS SUPPORTED BY AN OLD FENCE LINE RUNNING EAST. HE SET A P.K. NAIL TO MARK THE CORNER AND FOUR 3/4" DIA. IRON REBAR TO WITNESS THE CORNER. (PRICE COUNTY CORNER FORM N3352, E0300)

01/05/2012 I FOUND SIMPSON'S P.K. NAIL IN THE CENTERLINE OF CTH "YY" AND 3 OF HIS REBAR WITNESSES. THE DISTANCE TO THE SECTION CORNER TO THE NORTH AND THE DISTANCES TO THE WITNESSES CHECKED WITHIN TOLERANCE. I ACCEPTED THE P.K. NAIL AS THE CORNER AND SET AN ADDITIONAL 3/4" REBAR WITH AN ALUMINUM CAP AS A WITNESS.

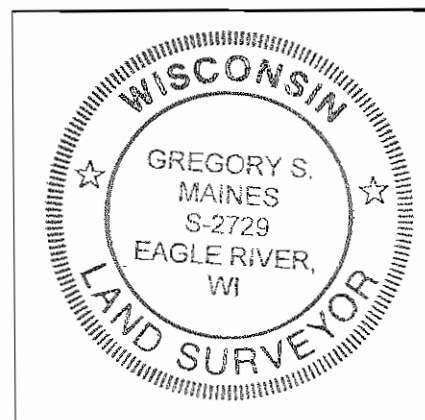
(c)(d)(e) PLAN VIEW OF CORNER WITH TIES TO AT LEAST FOUR WITNESSES. IF IN DISAGREEMENT WITH PREVIOUSLY ESTABLISHED CORNER, SHOW THE DISTANCES BETWEEN THE TWO CORNERS AND ALSO INDICATE THE TIE TO THE DISPUTED CORNER.



CERTIFICATION

I GREGORY S. MAINES, REGISTERED LAND SURVEYOR NO. 2729, HEREBY CERTIFY THAT THE CORNER LOCATION ON THIS RECORD WAS REFERENCED BY ME OR UNDER MY DIRECTION AND CONTROL AND THAT THIS U.S. PUBLIC LAND SURVEY MONUMENT RECORD IS COMPLETE TO THE BEST OF MY KNOWLEDGE AND BELIEF.

Gregory S. Maines 1/05/12
 SIGNATURE



INDEX NO. C-1

WEST ¼ CORNER - SECTION 6, T 34 N, R 4 E

OVERVIEW



MONUMENT



FACING NORTH



WEST ¼ CORNER - SECTION 6, T 34 N, R 4 E

FACING EAST



FACING SOUTH



FACING WEST

