

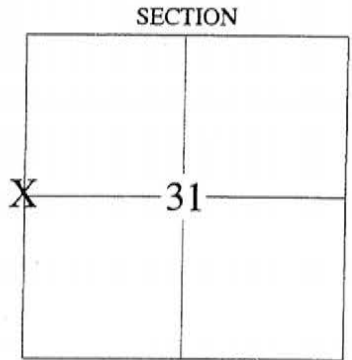
**LANGLADE COUNTY U.S. PUBLIC LAND
SURVEY MONUMENT LOCATION RECORD**

CORNER LOCATION: WEST QUARTER CORNER
 MONUMENT TYPE: 60D SPIKE SET
 COUNTY COORDINATE: N 398960.02 E 550266.20
 HORIZONTAL DATUM: WCCS LANGLADE CO. NAD83 2011
 DATE OF SURVEY: 12-2-2017
 SURVEY PARTY: JASON J. PFLIEGER

FOUND SECTION 31
 SET TOWNSHIP 33 NORTH
 RE-SET RANGE 9 EAST
 RE-TIED TOWN OF SUMMIT

BASIS FOR MONUMENT LOCATION:

1851: ORIGINAL CORNER ESTABLISHED BY JAMES MARSH
 1936: STONE SET BY C.H. PARKER
 1990: WILLIAM KELLY FOUND A DISTURBED STONE BELOW ROAD SURFACE. HE SET A 1" IRON PIPE AS THE CORNER AND TIED OUT THE CORNER.
 2017: I SET A 60D SPIKE PER EXISTING TIES. I ADDED 3 TIE AS SHOWN.



4 330836 2000 2017

LOCATION INDICATED BY 'X'

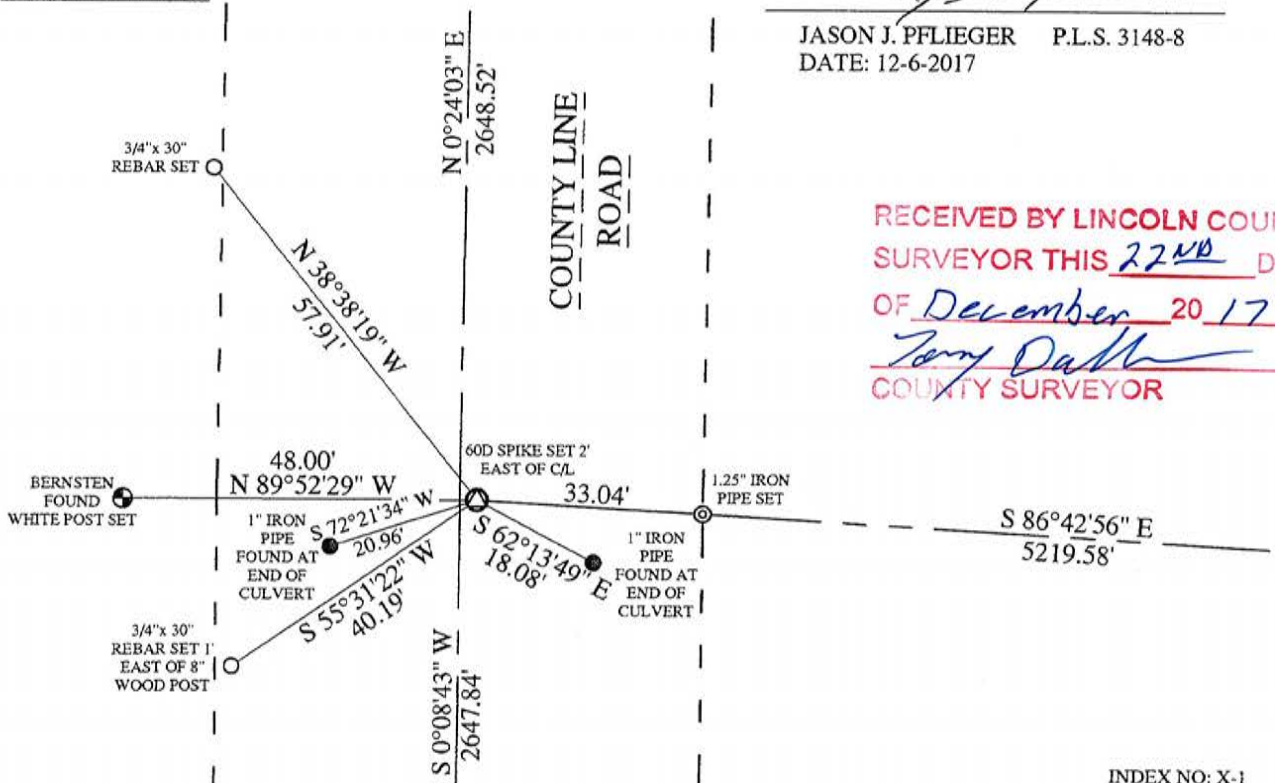


J. Pflieger

JASON J. PFLIEGER P.L.S. 3148-8
 DATE: 12-6-2017

RECEIVED BY LINCOLN COUNTY
 SURVEYOR THIS 22ND DAY
 OF December 2017
Terry Dalk
 COUNTY SURVEYOR

TIE SKETCH:



INDEX NO: X-1

W-25

U.S. PUBLIC LAND SURVEY MONUMENT RECORD

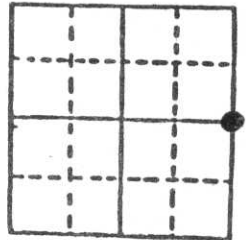
Note: This form is intended and designed to fulfill all requirements of Wisconsin Administrative Code, Chapter A-E 5.02, U.S. Public Land Survey Monument Record (3) (a) (b) (c) (d) (e) (f) (g) (h) (i). An additional sheet may be added if necessary to conform with said requirements.

(a) Corner location: Township 33 North

Range 8 East

Town RUSSELL

County LINCOLN

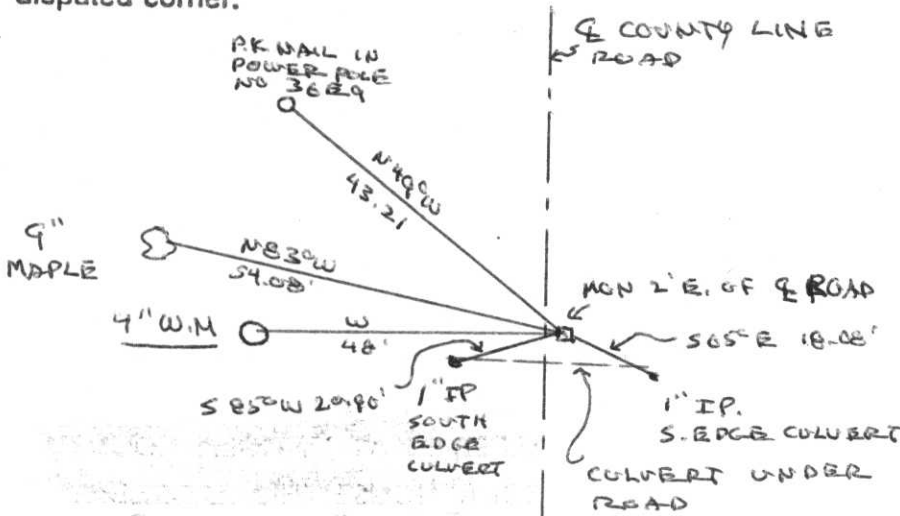


Section 35

b) (f) (g) (h) Description of monument found at this corner and if it was accepted, state all evidence (material, testimonial, occupational, plats, records, other monuments) used as a basis for accepting. If not accepted or if nothing was found, state evidence used as basis for establishing location. If reestablished through lost corner proportionate methods, indicate all monuments, distances and directions used to establish.

ORIGINAL CORNER ESTABLISHED BY J.M. MARSH IN JULY - AUGUST 1851. LOCATED 6x6 MARBLE MONUMENT THAT HAD BEEN DISTURBED. SET A 1" IRON PIPE TO DESIGNATE CORNER LOCATION. LEFT STONE MONUMENT IN ITS DISTURBED POSITION. SET RE-STEEL ROD ON S. SIDE STONE MARKED WITNESS MONUMENTS.

c) (d) (e) Plan view of corner with ties to at least 4 witness monuments. If in disagreement with previously established corner, show the distances between the two corners and also indicate the ties to the disputed corner.

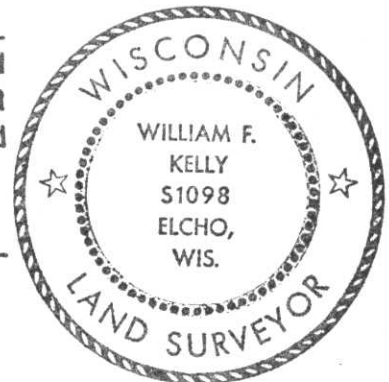


(i) I, WILLIAM F. KELLY

(Type or print name) certify that the corner location on this record was determined by me or under my direction and control and that this U.S. Public Land Survey Monument Record is correct and complete to the best of my knowledge and belief.

William F. Kelly
Signature

11-13-90
Date



MAG

Index No. X 25

W-25