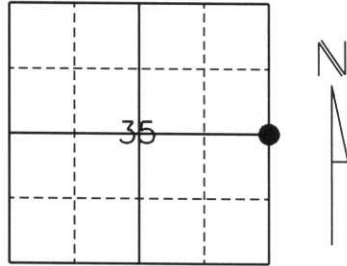


# U.S. PUBLIC LAND SURVEY MONUMENT RECORD

Note: This form is intended and designed to fulfill all requirements of Wisconsin Administrative Code, Chapter A-E 5.02, U.S. Public Land Survey Monument Record (3) (a) (b) (c) (d) (e) (f) (g) (h) (i). An additional sheet may be added if necessary to conform with said requirements.

(a) Corner location: Township 33 North  
 Range 8 East  
 Town/City/Village Russell  
 County Lincoln



Section 35

(b) (f) (g) (h) Description of monument found at this corner and if it was accepted, state all evidence (material, testimonial, occupational, plats, records, other monuments) used as a basis for accepting. If not accepted or if nothing was found, state evidence used as a basis for establishing location. If reestablished through lost corner proportionate methods, indicate all monuments, distances and directions used to establish.

*History of original corner establishment:*

*Originally Surveyed September 15, 1854 by Jackson L Prentice. Original corner was a wooden post with bearing trees:*

- 12" Tamarack S31°W, 9 lks.*
- 16" Tamarack N85° E, 29 lks*

*Revisited around the turn of the Century where a Granite Stone was placed.*

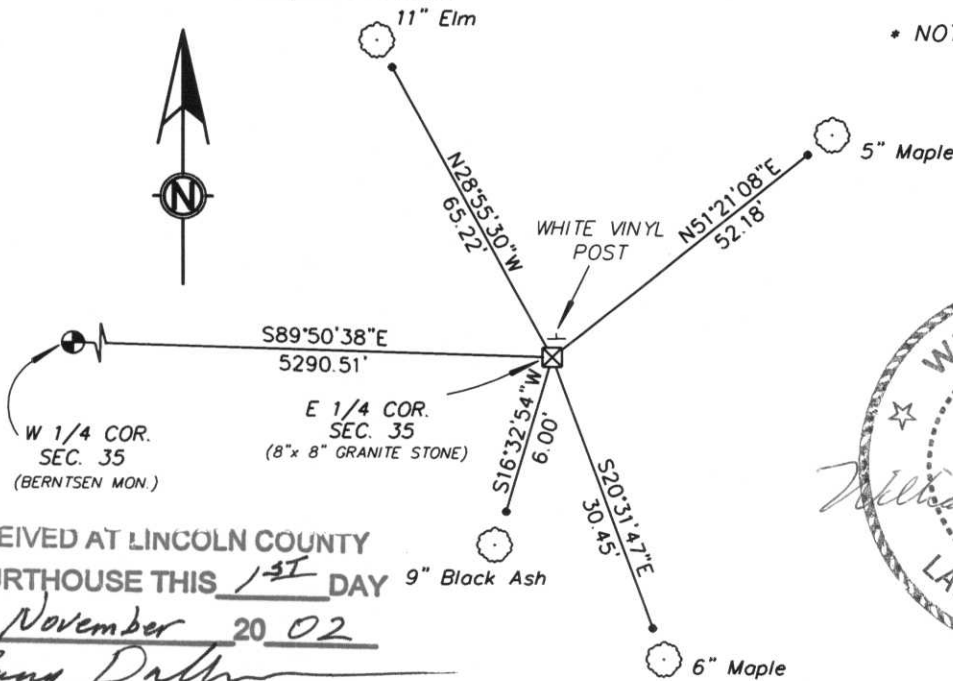
*Revisited by William F. Kelly November 28th, 1975 he stated, " found a 6" x 6" Granite Stone set in Tag Alder Marsh. Stone at end of E-W fence line. Corner identified by resident witness as 1/4 corner. Stone in good condition but frost heaved and tilted. Set stone upright and placed a 1" Iron Pipe below surface for detection. Placed small rocks and earth around stone and marked new bearing trees:"*

- 7" Balsam N64°E, 58.4'*
- 7" Aspen S24°E, 23.0'*
- 4" Black Ash S16°W, 8.2'*
- 6" Aspen N67°W, 44.9'*

*Description of corner evidence found:*

*Located stone in marshy area in good condition but heaved and tilted. Straightened and placed stones to hold in place. Set new bearing trees as shown.*

(c) (d) (e) Plan view of corner with ties to at least 4 witness monuments. If in disagreement with previously established corner, show the distances between the two corners and also indicate the ties to the disputed corner.



\* NOTE: Drawing not to scale.  
 All ties are to 7/8" Rebar with Lincoln County Caps approximately 2 feet away.



RECEIVED AT LINCOLN COUNTY  
 COURTHOUSE THIS 1st DAY  
 OF November 20 02  
Yang Dalen  
 LAND INFORMATION OFFICE

(I) I, William W. Nutter RLS, S-2299  
 (type or print name) certify that the corner location on this record was determined by me or under my direction and control and that this U.S. Public Land Survey Monument Record is correct and complete to the best of my knowledge and belief.

William W. Nutter, RLS  
 Signature

11-1-2002  
 Date

Index No. 12-21

CERTIFIED LAND CORNER RESTORATION

Index No. W-21

State of Wisconsin }  
County of LINCOLN } ss.

History of original corner establishment:



*William F. Kelly*  
3-12-76

I WILLIAM F. KELLY, do hereby certify that on the 28<sup>TH</sup> day of NOVEMBER, 1975, I found evidence of the WEST 1/4 corner of SECTION 36 Township 33, North, Range 8E, Fourth, Principal Meridian, as described hereon; and that from this evidence I established a new monument and accessories as described hereon to perpetuate the original location of this corner.

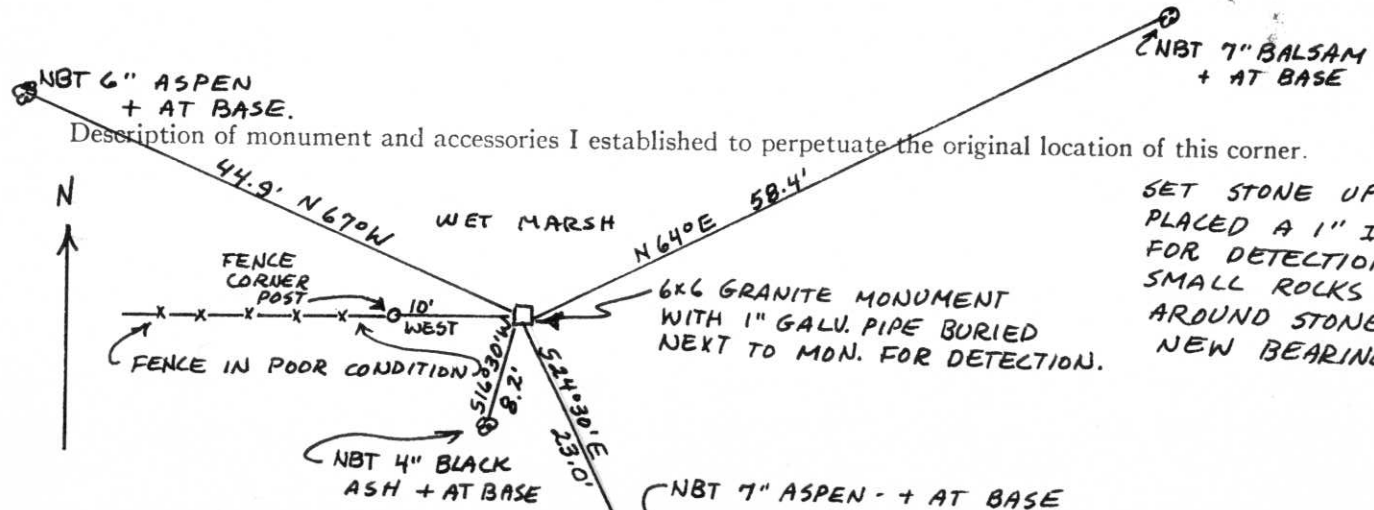
Description of corner evidence found:

LOCATED 6" x 6" GRANITE STONE SET IN TAG ELDER MARSH. STONE [ ] AT END OF E-W FENCE LINE. CORNER IDENTIFIED BY RESIDENT WITNESS AS 1/4 CORNER. STONE IN GOOD CONDITION BUT FROST HEAVED AND TILTED.

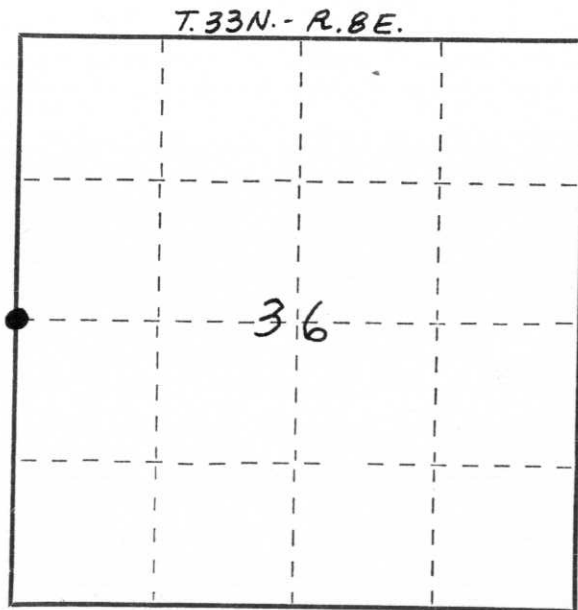
Resident witnesses:

A. SCHAUFELBERGER

Description of monument and accessories I established to perpetuate the original location of this corner.



SET STONE UPRIGHT AND PLACED A 1" IP. BELOW SURFACE FOR DETECTION. PLACED SMALL ROCKS AND EARTH AROUND STONE AND MARKED NEW BEARING TREES.



○ = Corner monument restored.

Dated at ELCHO, Wis., this 12<sup>TH</sup> day of MARCH, 1976

Signature William F. Kelly Title REGISTERED LAND SURVEYOR Registration No. 51098  
(County Surveyor, Registered Land Surveyor, or other duly authorized official)

Office of Register of Deeds, County of \_\_\_\_\_, I hereby certify that the within instrument was filed in this office for record on the \_\_\_\_\_ day of \_\_\_\_\_, 19\_\_\_\_ at \_\_\_\_\_ o'clock \_\_\_\_\_ M.

(Register of Deeds)

By \_\_\_\_\_ Deputy