

U.S. PUBLIC LAND SURVEY MONUMENT RECORD

NOTE: THIS FORM IS INTENDED AND DESIGNED TO FULFILL ALL REQUIREMENTS OF WISCONSIN ADMINISTRATIVE CODE, CHAPTER A-E 7.08, U.S. PUBLIC LAND SURVEY MONUMENT RECORD (3)(a)(b)(c)(d)(e)(f)(g)(h)(i). ADDITIONAL SHEETS MAY BE NECESSARY TO CONFORM TO SAID REQUIREMENTS.

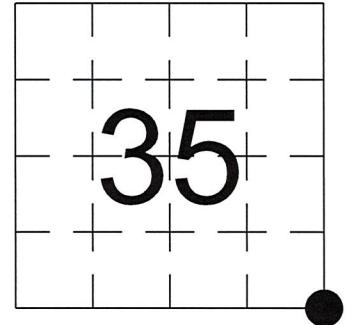
T 33 N, R 8 E

(a) CORNER LOCATION:

SOUTHEAST CORNER, SECTION 35
 TOWNSHIP 33 NORTH
 RANGE 8 EAST
 TOWN OF RUSSELL
 LINCOLN COUNTY
 WISCONSIN

(b) HISTORY OF ORIGINAL CORNER:

ORIGINAL SURVEYOR: James M. Marsh, Set post
 COMMENCING DATE: July 29, 1851
 COMPLETION DATE: August 11, 1851
 ORIGINAL BEARING TREES:
 8" Hemlock; N 50° E; 10 links
 10" Birch; S 85° E; 37 links
 10" Hemlock; S 31° W; 21 links
 18" Hemlock; N 50° W; 30 links

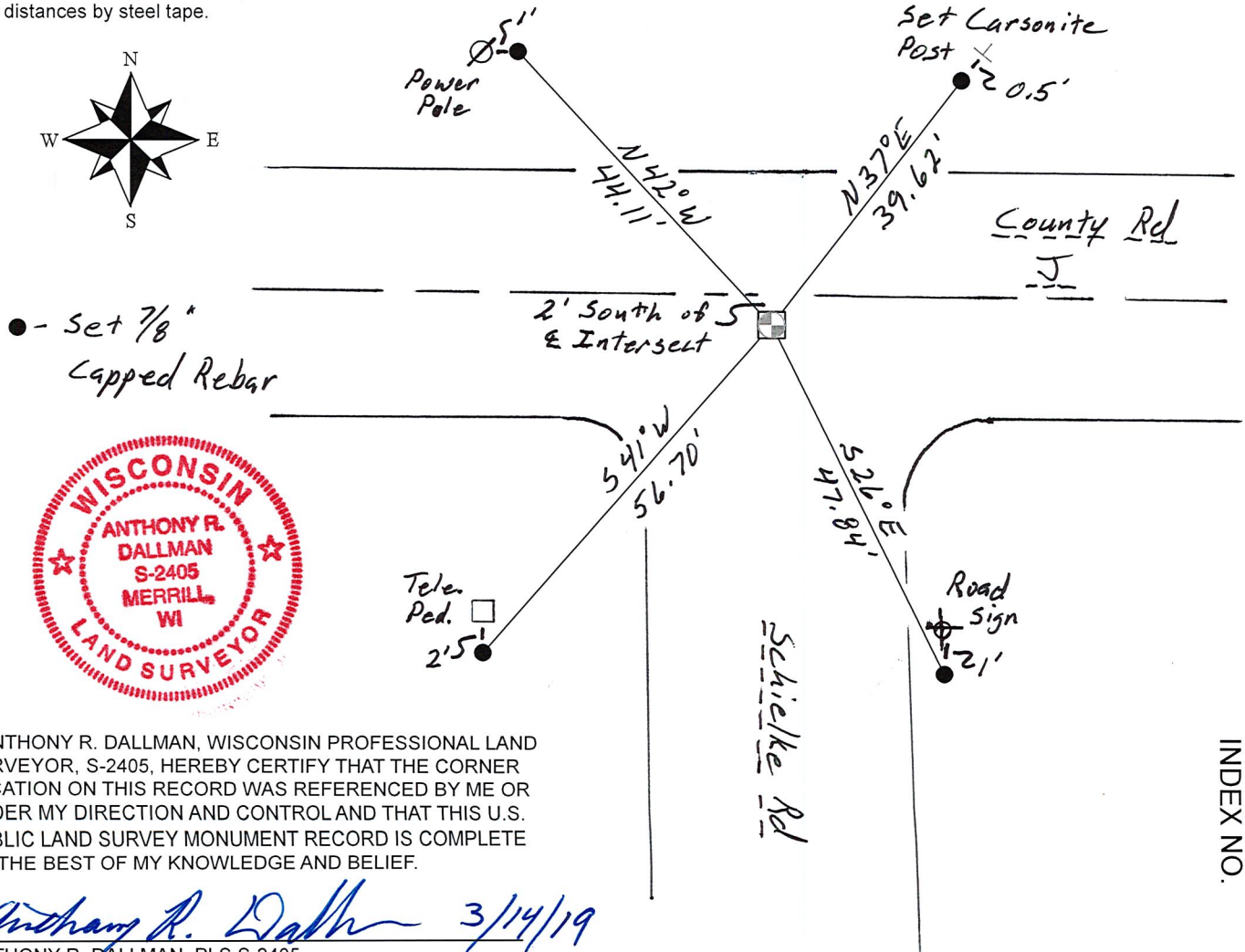


(f)(g)(h) DESCRIPTION OF MONUMENT FOUND AT THIS CORNER AND IF IT WAS ACCEPTED. STATE ALL EVIDENCE (MATERIAL, TESTIMONIAL, OCCUPATIONAL, PLATS, RECORDS, OTHER MONUMENTS) USED AS A BASIS FOR ESTABLISHING LOCATION. IF RE-ESTABLISHING THROUGH LOST CORNER PROPORTIONATE METHODS, INDICATE ALL MONUMENTS, DISTANCES, AND DIRECTIONS USED TO ESTABLISH. INDICATE TYPE OF MONUMENTS FOUND OR SET.

08/21/2018, I, Anthony R. Dallman, PLS-2405, found Berntsen Monument I set, in 2000, above found 6" x 6" Granite Monument, top 13" broken off, down 70". I accepted this location and set reference ties to further perpetuate the corner location, as shown in the sketch below.

(c)(d)(e) PLAN VIEW OF THE CORNER WITH TIES TO AT LEAST FOUR WITNESSES. IF IN DISAGREEMENT WITH PREVIOUSLY ESTABLISHED CORNER, SHOW THE DISTANCES BETWEEN THE TWO CORNERS AND ALSO THE TIES TO THE DISPUTED CORNER.

- Tie bearings by hand-held compass.
- Tie distances by steel tape.



I, ANTHONY R. DALLMAN, WISCONSIN PROFESSIONAL LAND SURVEYOR, S-2405, HEREBY CERTIFY THAT THE CORNER LOCATION ON THIS RECORD WAS REFERENCED BY ME OR UNDER MY DIRECTION AND CONTROL AND THAT THIS U.S. PUBLIC LAND SURVEY MONUMENT RECORD IS COMPLETE TO THE BEST OF MY KNOWLEDGE AND BELIEF.

Anthony R. Dallman 3/14/19
 ANTHONY R. DALLMAN, PLS S-2405

INDEX NO.