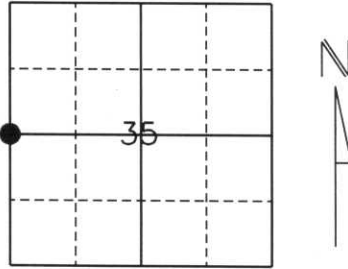


U.S. PUBLIC LAND SURVEY MONUMENT RECORD

Note: This form is intended and designed to fulfill all requirements of Wisconsin Administrative Code, Chapter A-E 5.02, U.S. Public Land Survey Monument Record (3) (a) (b) (c) (d) (e) (f) (g) (h) (l). An additional sheet may be added if necessary to conform with said requirements.

(a) Corner location: Township 33 North
 Range 8 East
 Town/City/Village Russell
 County Lincoln



Section 35

(b) (f) (g) (h) Description of monument found at this corner and if it was accepted, state all evidence (material, testimonial, occupational, plats, records, other monuments) used as a basis for accepting. If not accepted or if nothing was found, state evidence used as a basis for establishing location. If reestablished through lost corner proportionate methods, indicate all monuments, distances and directions used to establish.

History of original corner establishment:

*Originally Surveyed September 15, 1854 by Jackson L. Prentice. Original corner was a wooden post with bearing trees:
 10" Spruce N81° E, 4.6 lks
 14" Pine N29.5°W, 6 lks.*

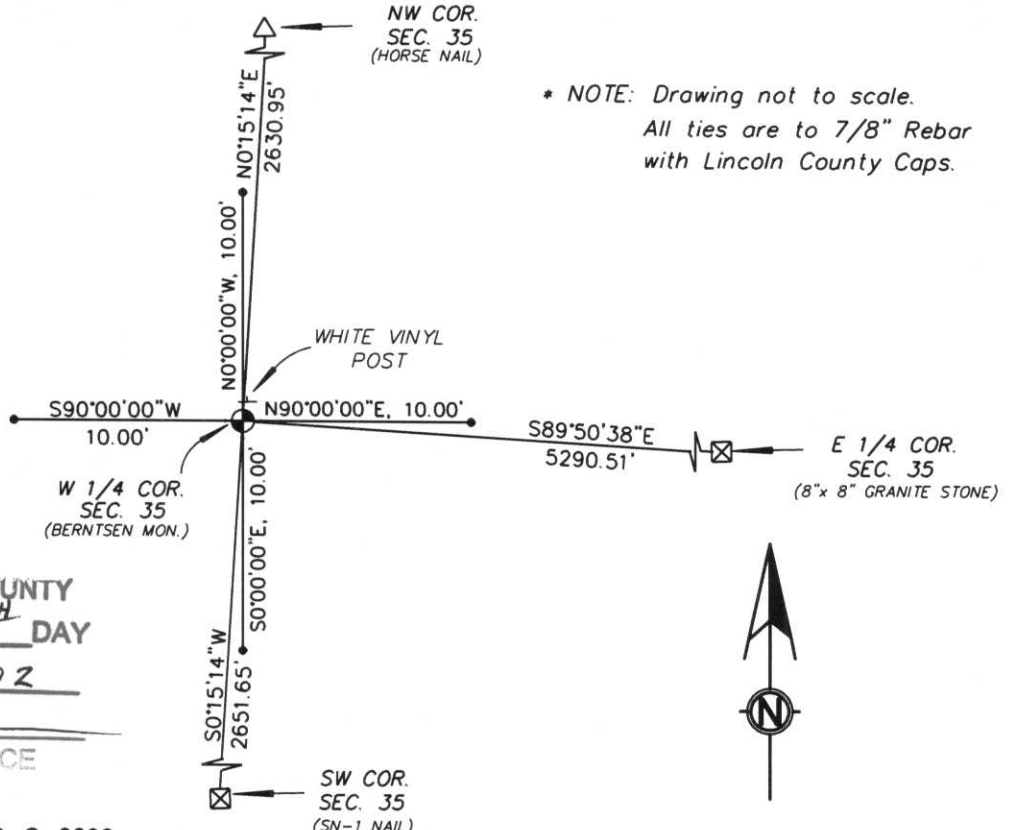
Revisited around the turn of the Century where a Granite Stone was placed.

Description of corner evidence found:

Could not find any evidence of the Stone and assumed to be lost.

We placed a Berntsen Monument at extension of a fence line to the East and on the bearing between the Northwest and the Southwest Section Corners. Corner located in marshy area.

(c) (d) (e) Plan view of corner with ties to at least 4 witness monuments. If in disagreement with previously established corner, show the distances between the two corners and also indicate the ties to the disputed corner.



RECEIVED AT LINCOLN COUNTY
 COURTHOUSE THIS 4TH DAY
 OF November 2002
Tony Diller
 LAND INFORMATION OFFICE

(l) I, William W. Nutter RLS, S-2299
 (type or print name) certify that the corner location on this record was determined by me or under my direction and control and that this U.S. Public Land Survey Monument Record is correct and complete to the best of my knowledge and belief.

William W. Nutter, S-2299 RLS 10-29-2002
 Signature Date

Index No.

L1-17