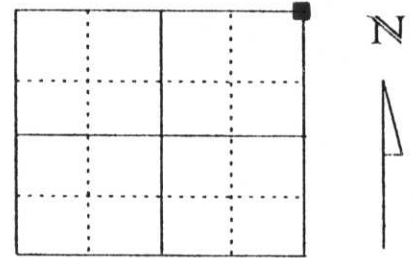


U.S. PUBLIC LAND SURVEY MONUMENT RECORD

Note: This form is intended and designed to fulfill all requirements of Wisconsin Administrative Code, Chapter A-E 5.02, U.S. Public Land Survey Monument Record (3) (a) (b) (c) (d) (e) (f) (g) (h) (i). An additional sheet may be added if necessary to conform with said requirements.

(a) Corner location: Township 32 North
 Range 8 East
 Town/City/Village SCHLEY
 County Lincoln



Section 4

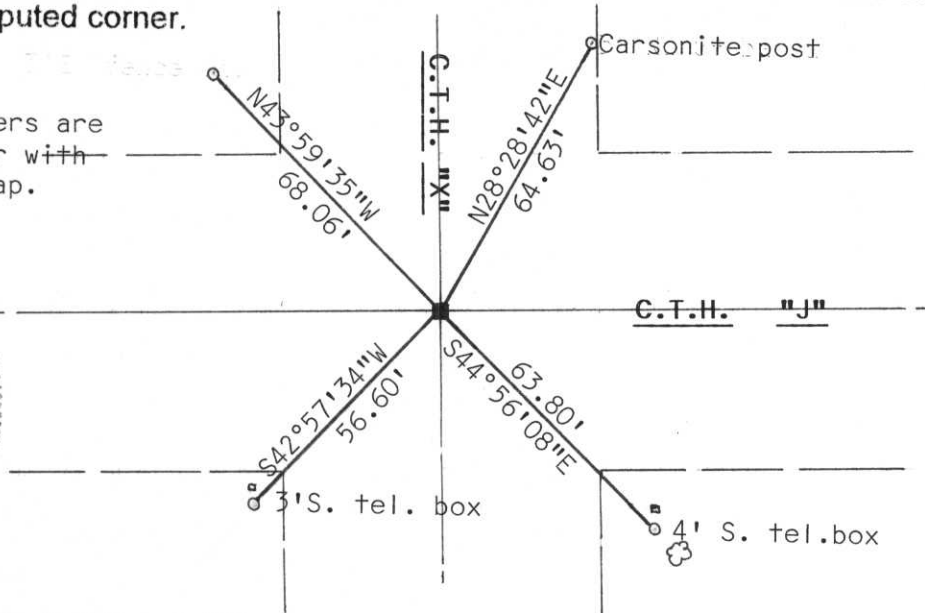
(b) (f) (g) (h) Description of monument found at this corner and if it was accepted, state all evidence (material, testimonial, occupational, plats, records, other monuments) used as a basis for accepting. If not accepted or if nothing was found, state evidence used as basis for establishing location. If reestablished through lost corner proportionate methods, indicate all monuments, distances and directions used to establish.

Corner was dug for by surveyor Lester Schmidt, using the Lincoln County backhoe and operator. He found a 8"X 8" stone monument in good condition. Stone was accepted as correct. Corner fell in the center of the roadway. Temporary reference points were set. Using the referenced points from Schmidt we set the required witness corners.
 Original corner was wood post set by F.S. Ellis in 1852. We found no original evidence.

RECEIVED AT LINCOLN COUNTY
 COURTHOUSE THIS 25th DAY
March 19 99
Pat Priebe
 RECORDS AND INFORMATION OFFICE

(c) (d) (e) Plan view of corner with ties to at least 4 witness monuments. If in disagreement with previously established corner, show the distances between the two corners and also indicate the ties to the disputed corner.

All witness corners are
 3/4" X 30" re-bar with
 County witness cap.



(i) I, Edwin R. Abendroth RLS No. S-798
 (type or print name) certify that the corner location on this record was determined by me or under my direction and control and that this U.S. Public Land Survey Monument Record is correct and complete to the best of my knowledge and belief.

Edwin R. Abendroth
 Signature

3-24-99
 Date

Index No. A-13



24 11:19 AM



24 11:20 AM