

U.S. PUBLIC LAND SURVEY MONUMENT RECORD

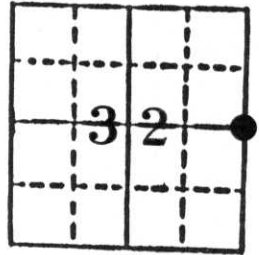
Note: This form is intended and designed to fulfill all requirements of Wisconsin Administrative Code, Chapter A-E 5.02, U.S. Public Land Survey Monument Record (3) (a) (b) (c) (d) (e) (f) (g) (h) (i). An additional sheet may be added if necessary to conform with said requirements.

(a) Corner location: Township 33 North

Range 8 East

Town Russell

County Lincoln

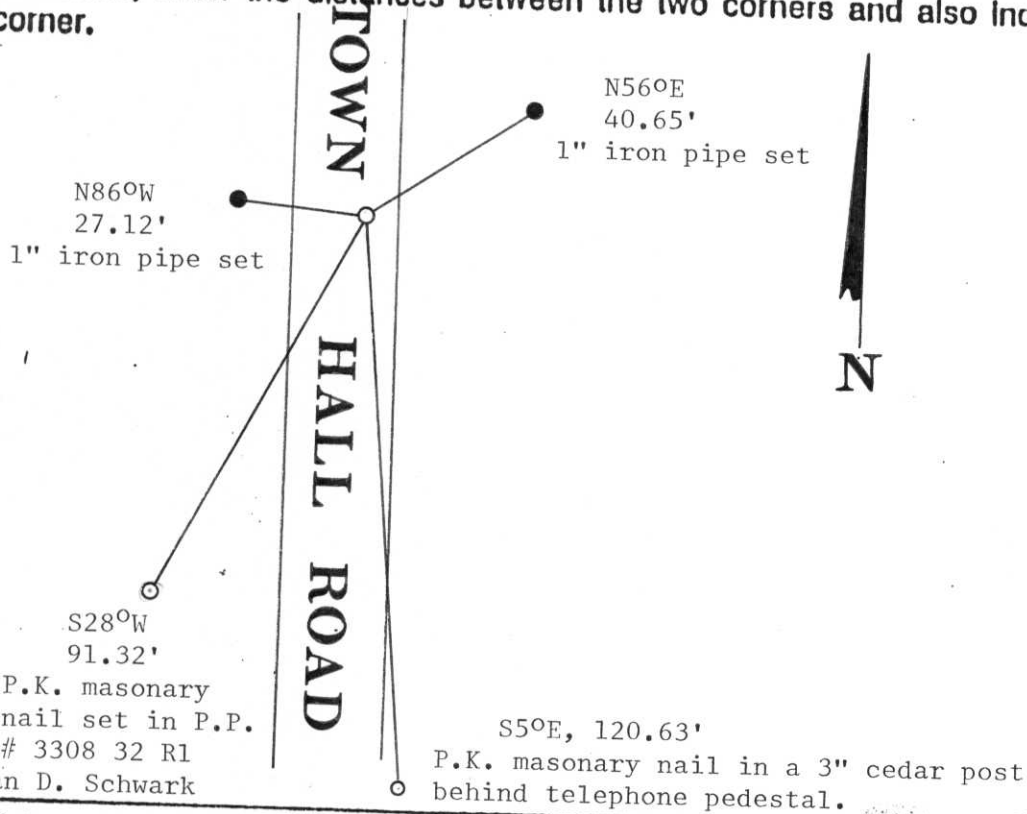


Section 32

b) (f) (g) (h) Description of monument found at this corner and if it was accepted, state all evidence (material, testimonial, occupational, plats, records, other monuments) used as a basis for accepting. If not accepted or if nothing was found, state evidence used as basis for establishing location. If reestablished through lost corner proportionate methods, indicate all monuments, distances and directions used to establish.

On September 3, 1986 we dug for the above corner with the assistance of Jack Prueser and his backhoe and found the broken remains of a 6" x 6" red granite monument approximately 5' under the blacktop. We set a Lincoln County Berntsen Monument in the location of the granite and established the following references.

c) (d) (e) Plan view of corner with ties to at least 4 witness monuments. If in disagreement with previously established corner, show the distances between the two corners and also indicate the ties to the disputed corner.



(i) I, Sheridan D. Schwark

(Type or print name) certify that the corner location on this record was determined by me or under my direction and control and that this U.S. Public Land Survey Monument Record is correct and complete to the best of my knowledge and belief.

Sheridan D. Schwark

Signature

December 6, 1986

Date



Index No. 10-9

LINCOLN COUNTY U.S. PUBLIC LAND SURVEY MONUMENT LOCATION RECORD

CORNER NUMBER 323385

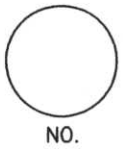
SECTION 32

TOWNSHIP 33 NORTH

RANGE 8 EAST

RUSSELL

CITY, VILLAGE, TOWN



LANDMARK BENCHMARK _____ FOUND
 CORNER IDENTITY: EAST 1/4 CORNER SECTION 32 SET
 RESET
 RE-TIED

LINCOLN COUNTY COORDINATE: N: 166567.425
 E: 439254.532

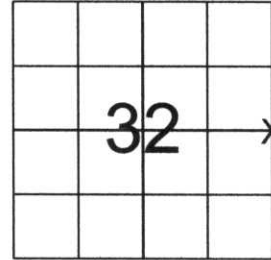
ELEVATION-(FEET): _____ DATUM: _____

WEATHER: PARTLY CLOUDY

DATE OF SURVEY: 10-10-05 TEMPERATURE: 55 °F

SURVEY PARTY: NATHAN WINCENTSEN, KEITH WALKOWSKI

SECTION



LOCATION (Indicated By X)



BASIS FOR MONUMENT LOCATION:
 (DESCRIBE METHOD OF SURVEY AND CORNER AUTHENTICATION)

DUG FOR CORNER BY HAND, FOUND BERNSTEN ±8" UNDER PAVEMENT. EXISTING TIES HAD BEEN DISTURBED OR DESTROYED. PERPETUATED CORNER AS SHOWN BELOW.

CERTIFIED CORRECT:

Keith J. Walkowski

KEITH J. WALKOWSKI
 Registered Land Surveyor

DATE: December 19th, 2005

FIELD BOOK NO. N/A PAGE NO. N/A

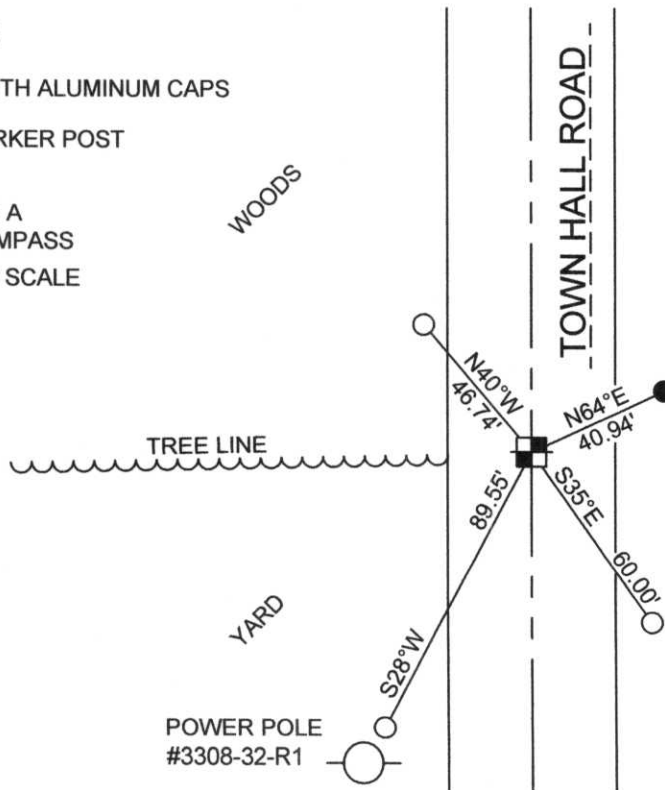
COMPANY RIVERSIDE LAND SURVEYING LLC

TIE SKETCH: SHOW MINIMUM OF FOUR (4) HORIZONTAL TIE DISTANCES TO FIXED WITNESS MONUMENTS. DESCRIBE ALL MONUMENTS FOUND OR SET. CORRECT ALL DISTANCES SHOWN TO STANDARD TEMPERATURE OF 68° F.

- FOUND BERNSTEN
- SET 3/4" REBAR WITH ALUMINUM CAPS
- VINYL SURVEY MARKER POST

NOTE

- ALL BEARINGS ARE FROM A HAND HELD MAGNETIC COMPASS
- THIS DRAWING IS NOT TO SCALE



RECEIVED BY LINCOLN COUNTY SURVEYOR THIS 19th DAY OF December 20 05
Tony Dahl
 COUNTY SURVEYOR

6-11