

U.S. PUBLIC LAND SURVEY MONUMENT RECORD

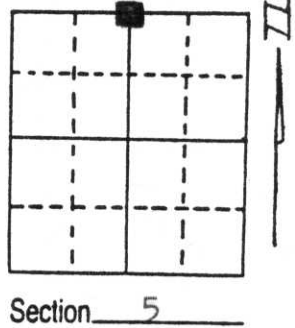
Note: This form is intended and designed to fulfill all requirements of Wisconsin Administrative Code, Chapter A-E 5.02, U.S. Public Land Survey Monument Record (3) (a) (b) (c) (d) (e) (f) (g) (h) (i). An additional sheet may be added if necessary to conform with said requirements.

(a) Corner location: Township 32 North

Range 8 East

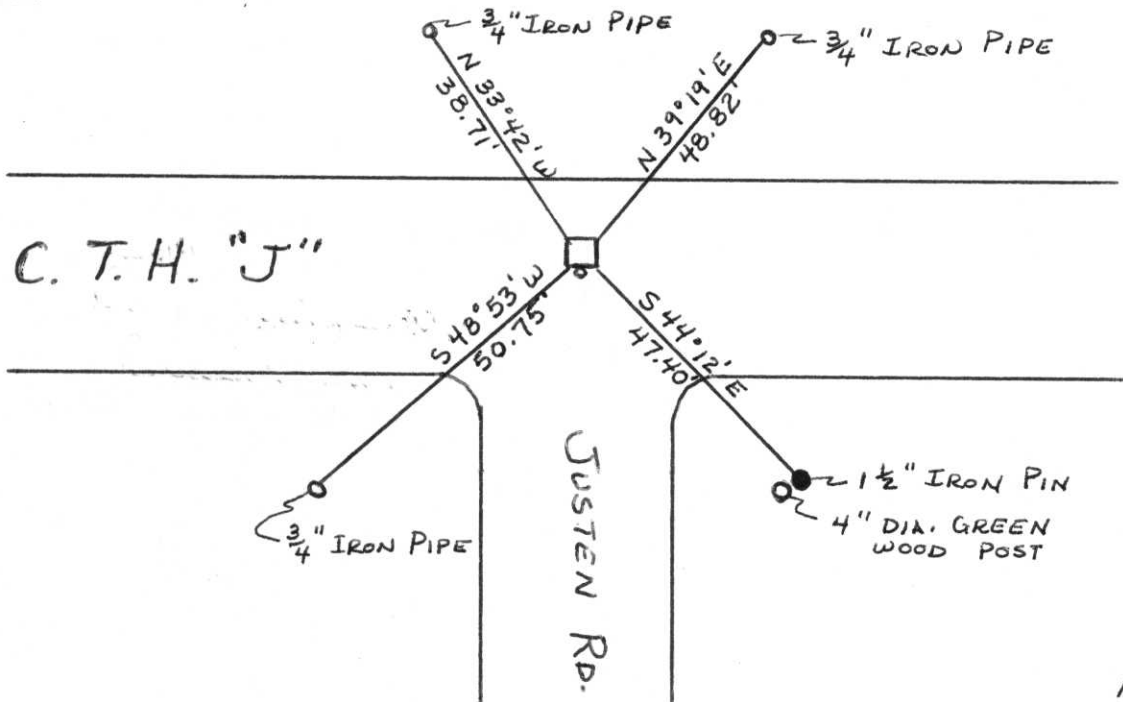
Town/City/Village Schley

County Lincoln



(b) (f) (g) (h) Description of monument found at this corner and if it was accepted, state all evidence (material, testimonial, occupational, plats, records, other monuments) used as a basis for accepting. If not accepted or if nothing was found, state evidence used as basis for establishing location. If reestablished through lost corner proportionate methods, indicate all monuments, distances and directions used to establish. Original Gov't. Survey: July 1851 by James M. Marsh, set wood post for corner with bearings, birch 30 S 1° E 13 links, sugar 12 S 20° W 9 links, hemlock 12 N 12° W 17 links & sugar 14 N 31° E 23 links. Using the Lincoln County gradeall, dug in County Trunk Highway "J" and found a 6" x 7" red granite monument, (the top 16" of the stone broken off. Reset top portion over the bottom portion of the stone.) the top being 24" below the surface of the road. I set a 3/4" iron pipe on the south side of the stone for reference & location purposes. The corner is 1.0' north of the centre-line of County Trunk Highway "J". Referenced the corner as shown below.

(c) (d) (e) Plan view of corner with ties to at least 4 witness monuments. If in disagreement with previously established corner, show the distances between the two corners and also indicate the ties to the disputed corner.



(i) I, Lester J. Schmit R.L.S. S-1192

(type or print name) certify that the corner location on this record was determined by me or under my direction and control and that this U.S. Public Land Survey Monument Record is correct and complete to the best of my knowledge and belief.

Lester J. Schmit 13 Oct 94
Signature Date



NOT TO SCALE

Index No. A-7