

U.S. PUBLIC LAND SURVEY MONUMENT RECORD

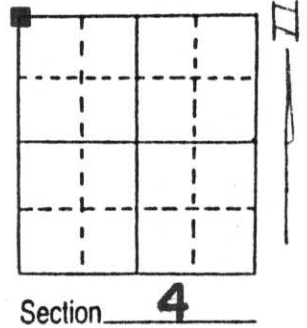
Note: This form is intended and designed to fulfill all requirements of Wisconsin Administrative Code, Chapter A-E 5.02, U.S. Public Land Survey Monument Record (3) (a) (b) (c) (d) (e) (f) (g) (h) (i). An additional sheet may be added if necessary to conform with said requirements.

(a) Corner location: Township 32 North

Range 8 East

Town/City/Village SCHLEY

County LINCOLN



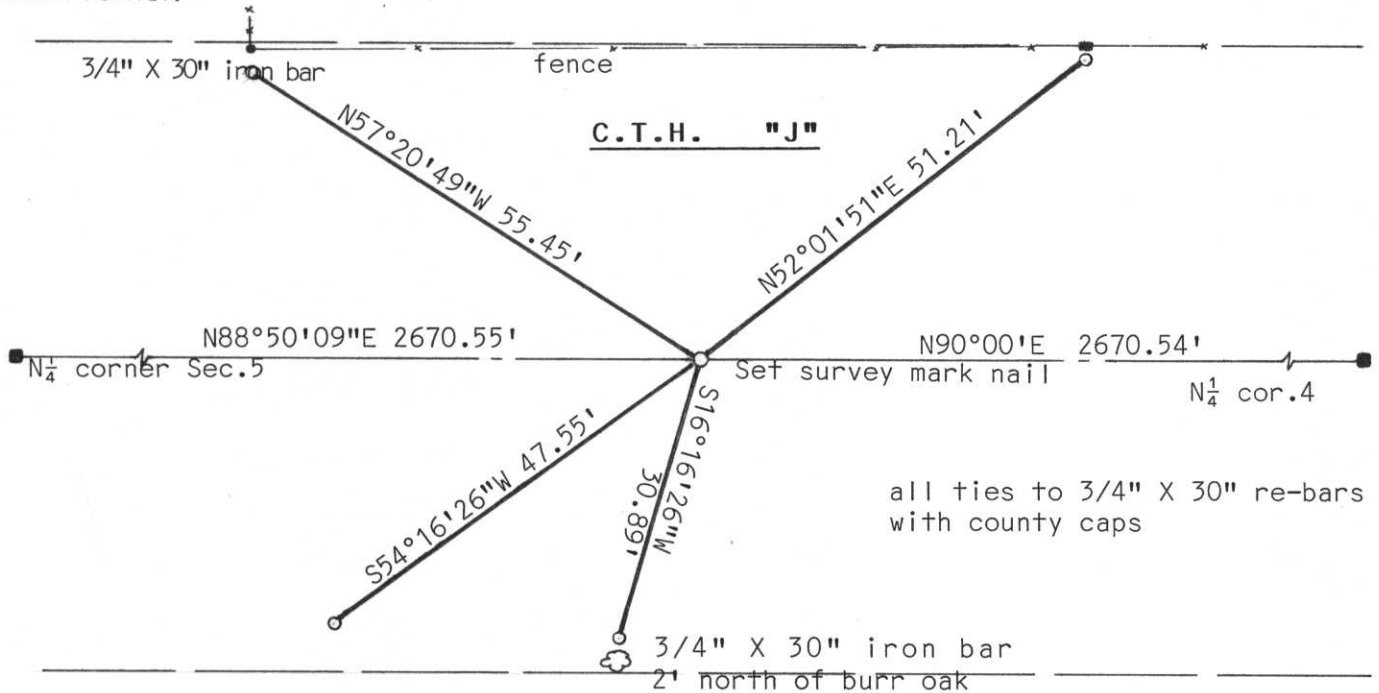
(b) (f) (g) (h) Description of monument found at this corner and if it was accepted, state all evidence (material, testimonial, occupational, plats, records, other monuments) used as a basis for accepting. If not accepted or if nothing was found, state evidence used as basis for establishing location. If reestablished through lost corner proportionate methods, indicate all monuments, distances and directions used to establish.

Section corner fell in fill area about 6 to 8 feet. Decided not to dig after measuring to corner location and conferring with Lester Schmidt. Mr. Peter ^{Rachel} Konkke of the County Hwy. Dept. also stated that the roadway fill would be disturbed and difficult to repair because of the marshy wet condition.

We set the corner by single proportionate measurement and included in the Section measurements. Corner location fit well in all directions. Accepted corner as established.

RECEIVED AT LINCOLN COUNTY
COURTHOUSE THIS 1st DAY
OF Oct 19 97
Pat Priebe
TAX DESCRIPTION OFFICE

(c) (d) (e) Plan view of corner with ties to at least 4 witness monuments. If in disagreement with previously established corner, show the distances between the two corners and also indicate the ties to the disputed corner.



all ties to 3/4" X 30" re-bars with county caps

(i) I, Edwin R. Abendroth
(type or print name) certify that the corner location on this record was determined by me or under my direction and control and that this U.S. Public Land Survey Monument Record is correct and complete to the best of my knowledge and belief.

Edwin R. Abendroth September 31, 1997
Signature Date



Index No. A-9



24 10:07 AM



24 10:08 AM



24 10:10 AM



24 10:10 AM