

LINCOLN COUNTY U.S. PUBLIC LAND SURVEY MONUMENT LOCATION RECORD

SECTION 6
TOWNSHIP 32 N
RANGE 8 E

A-3

LANDMARK BENCHMARK _____

FOUND
SET
RESET
RE-TIED

CORNER IDENTITY: 6" x 6" GRANITE STONE

SCHLEY
CITY, VILLAGE, TOWN

NO.

LINCOLN COUNTY COORDINATE: N: 163893.537

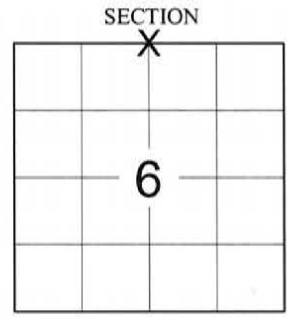
E: 431226.121

ELEVATION-(FEET): _____ DATUM: NAD 83 (2011)

WEATHER: CLOUDY

DATE OF SURVEY: 3/16/2021 TEMPERATURE: 30 °F

SURVEY PARTY: KEITH WALKOWSKI / COLLIN MARQUARDT



BASIS FOR MONUMENT LOCATION:

(DESCRIBE METHOD OF SURVEY AND CORNER AUTHENTICATION)

SEARCH FOR THE NORTH 1/4 CORNER OF SECTION 6 AND FOUND THE 6" x 6" GRANITE STONE AND THE BERNTSEN MONUMENT ON THE SOUTH SIDE OF THE STONE AND 1 TIE TO THE NORTH OF THE STONE FROM THE RECORD TIE SHEET FROM 1975 BY LESTER SCHMIDT. THE GRANITE STONE AND BERNTSEN MONUMENT WERE FOUND LEANING OVER AND HEAVED FROM EROSION AND FROST. I DUG AROUND THE GRANITE STONE AND RESET THE STONE FLUSH WITH THE GROUND TO THE PUBLISHED COUNTY COORDINATES WHICH MATCHED THE REMAINING TIE TO THE NORTH VERY WELL. I LEFT THE BERNTSEN MONUMENT IN THE CONDITION I FOUND IT. SET 3 NEW TIES TO PERPETUATE THE CORNER LOCATION AS SHOWN BELOW.

LOCATION
(Indicated By X)



FIELD BOOK NO. NA PAGE NO. NA

COMPANY RIVERSIDE LAND SURVEYING LLC

CERTIFIED CORRECT:

Keith J. Walkowski

KEITH J. WALKOWSKI S-2717
Professional Land Surveyor

DATE: MARCH 30TH, 2021

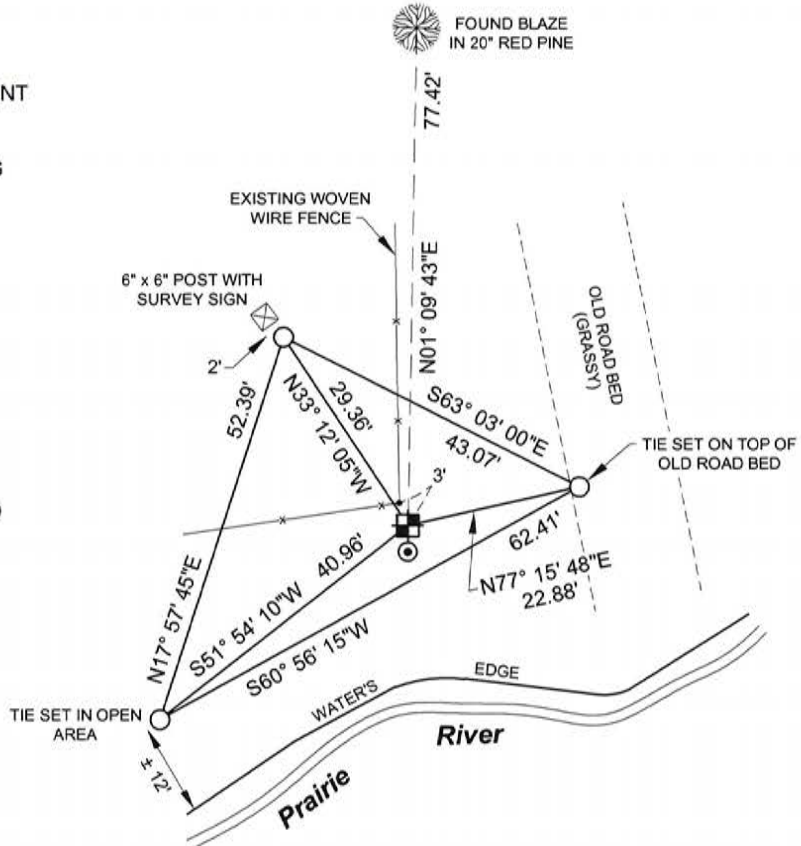
TIE SKETCH:

- FOUND 6" x 6" GRANITE STONE MONUMENT
- 1-1/4" O.D. x 24" IRON PIPE SET
- FOUND BERNTSEN MONUMENT LEANING

RECEIVED BY LINCOLN COUNTY
SURVEYOR THIS 23RD DAY
OF April 20 21
Tony Dahl
COUNTY SURVEYOR

BEARINGS ARE BASED ON THE LINCOLN COUNTY COORDINATE SYSTEM NAD 83 (2011) AND REFERENCED AS SHOWN

THIS DRAWING IS NOT TO SCALE



A-3
NO.

CERTIFIED LAND CORNER RESTORATION

Index No. A-3

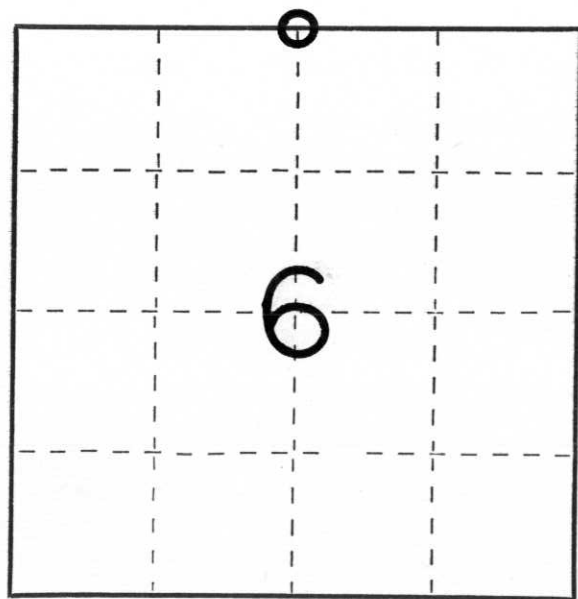
State of Wisconsin }
County of Lincoln } ss.

I Lester J. Schmit do hereby certify that on the 26th day of February, 1975, I found evidence of the North 1/4 corner of Section 6 Township 32, North, Range S. East, Fourth, Principal Meridian, as described hereon; and that from this evidence I established a new monument and accessories as described hereon to perpetuate the original location of this corner.

Resident witnesses:

Henry Gerbig

Doral Mullins



○ = Corner monument restored.

History of original corner establishment: Surveyor: James Marsh Date: 30 July 1851
Monumentation: None. Original survey does not indicate setting a post for said N. 1/4 cor., of Sec. 6, because of Prairie River, but upon measurement to the N. 1/4 cor., of Sec. 5, T. 32 N., R. 8 E., it is found to be 79.98 Chains, approximately the same as the Original Survey. Said N. 1/4 cor., of Sec. 5 is a granit monument, set during the same time as said N. 1/4 cor., of Sec. 6.

Description of corner evidence found: A granite monument, 6" x 6" x 30", 4" above ground, set about 1912 by the Government, as witnessed by Henry Gerbig, long time resident. This granite monument is situated on a fence line (very old) running north and south.

Description of monument and accessories I established to perpetuate the original location of this corner.

Berntsen Monument - 30" (Set 1.00' south of granite monument which is N. 1/4 cor., Sec. 6)
Berntsen Monument is to be Witness Corner to granite monument.
P.K. Nail in 8" Norway Pine N 3° E, 77.55'
P.K. Nail in 9" Elm S 13° W, 112.59'
Northwest corner of South Bridge Abutment S 50° E, 64.95'
Cleared Land to the Northwest

Dated at Rhineland, Wis., this 12th day of August, 1975

Signature Lester J. Schmit Title Land Surveyor Registration No. S-1192
(County Surveyor, Registered Land Surveyor, or other duly authorized official)

Office of Register of Deeds, County of _____, I hereby certify that the within instrument was filed in this office for record on the _____ day of _____, 19____ at _____ o'clock _____ M.

(Register of Deeds)

By _____ Deputy