

U.S. PUBLIC LAND SURVEY MONUMENT RECORD

NOTE: THIS FORM IS INTENDED AND DESIGNED TO FULFILL ALL REQUIREMENTS OF WISCONSIN ADMINISTRATIVE CODE, CHAPTER A-E 7.08, U.S. PUBLIC LAND SURVEY MONUMENT RECORD (3)(a)(b)(c)(d)(e)(f)(g)(h)(i). ADDITIONAL SHEETS MAY BE NECESSARY TO CONFORM TO SAID REQUIREMENTS.

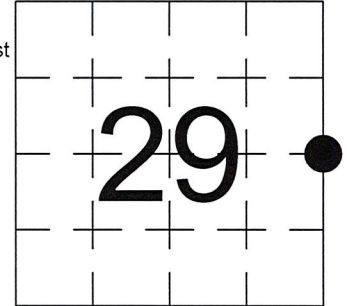
T 33 N, R 8 E

(a) CORNER LOCATION:

EAST QUARTER CORNER, SECTION 29
 TOWNSHIP 33 NORTH
 RANGE 8 EAST
 TOWN OF RUSSELL
 LINCOLN COUNTY
 WISCONSIN

(b) HISTORY OF ORIGINAL CORNER:

ORIGINAL SURVEYOR: Jackson L. Prentice, Set post
 COMMENCING DATE: October 2, 1854
 COMPLETION DATE: October 13, 1854
 ORIGINAL BEARING TREES:
 9" Balsam; S 74° W; 38 links
 9" White Oak; S 73° E; 37 links



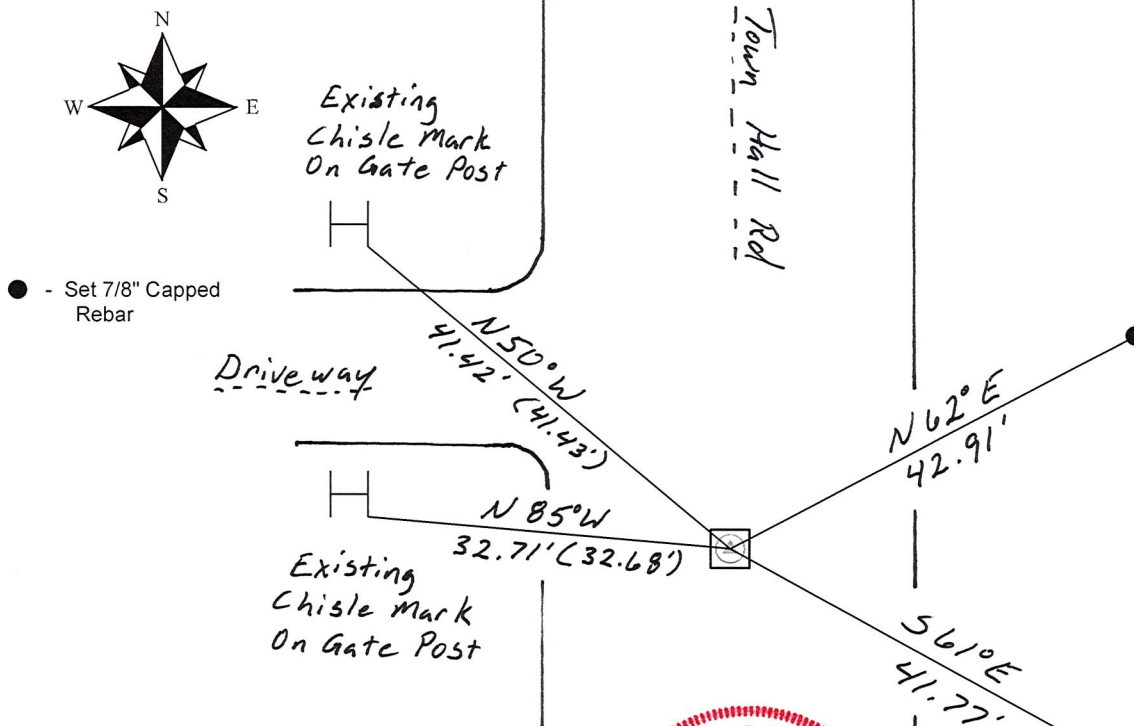
(f)(g)(h) DESCRIPTION OF MONUMENT FOUND AT THIS CORNER AND IF IT WAS ACCEPTED. STATE ALL EVIDENCE (MATERIAL, TESTIMONIAL, OCCUPATIONAL, PLATS, RECORDS, OTHER MONUMENTS) USED AS A BASIS FOR ESTABLISHING LOCATION. IF RE-ESTABLISHING THROUGH LOST CORNER PROPORTIONATE METHODS, INDICATE ALL MONUMENTS, DISTANCES, AND DIRECTIONS USED TO ESTABLISH. INDICATE TYPE OF MONUMENTS FOUND OR SET.

1990, Edwin Abendroth found 8" X 8" Stone Monument.

8/08/2018, I, Anthony R. Dallman, PLS-2405, found the 8" X 8" Granite Monument, down 3", and 3 of Abendroth's ties, the spruce tree is dead and leaning. I accepted this location and set reference ties to further perpetuate the corner location, returned on 7/25/2019 to set a SMN-1 Nail in new road surface, as shown in the sketch below.

(c)(d)(e) PLAN VIEW OF THE CORNER WITH TIES TO AT LEAST FOUR WITNESSES. IF IN DISAGREEMENT WITH PREVIOUSLY ESTABLISHED CORNER, SHOW THE DISTANCES BETWEEN THE TWO CORNERS AND ALSO THE TIES TO THE DISPUTED CORNER.

- Tie bearings by hand-held compass.
- Tie distances by steel tape.



I, ANTHONY R. DALLMAN, WISCONSIN PROFESSIONAL LAND SURVEYOR, S-2405, HEREBY CERTIFY THAT THE CORNER LOCATION ON THIS RECORD WAS REFERENCED BY ME OR UNDER MY DIRECTION AND CONTROL AND THAT THIS U.S. PUBLIC LAND SURVEY MONUMENT RECORD IS COMPLETE TO THE BEST OF MY KNOWLEDGE AND BELIEF.



Anthony R. Dallman 8/14/19
 ANTHONY R. DALLMAN, PLS S-2405

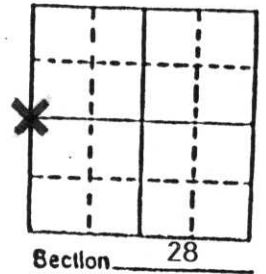
INDEX NO. S-9

U.S. PUBLIC LAND SURVEY MONUMENT RECORD

Note: This form is intended and designed to fulfill all requirements of Wisconsin Administrative Code, Chapter A-E 5.02, U.S. Public Land Survey Monument Record (3) (a) (b) (c) (d) (e) (f) (g) (h) (i). An additional sheet may be added if necessary to conform with said requirements.

(a) Corner location: Township 33 North
 Range 8 East

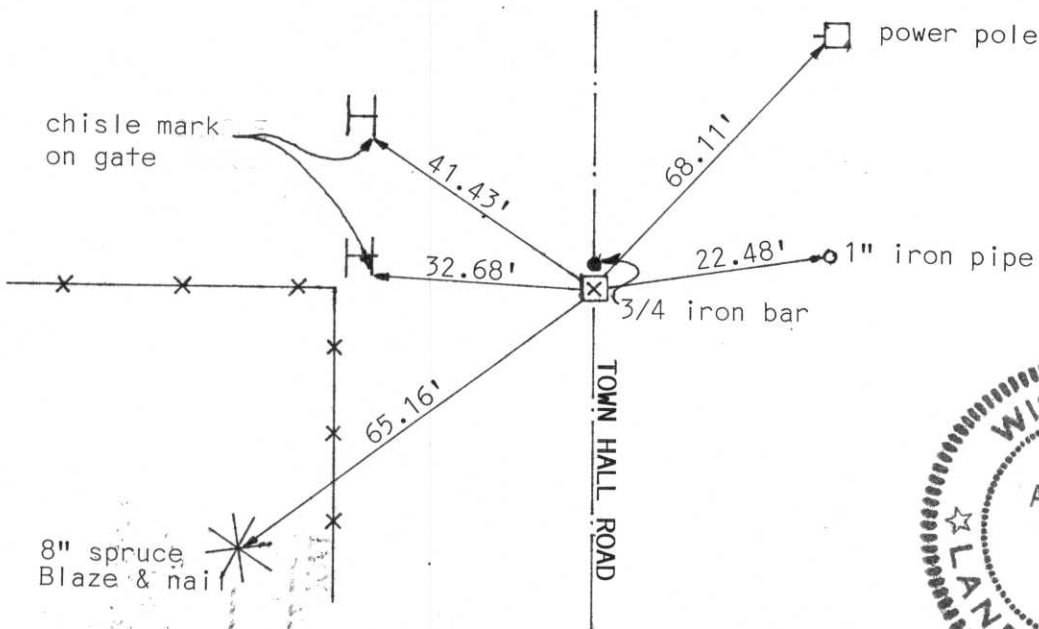
Town Russell
 County Lincoln



b) (f) (g) (h) Description of monument found at this corner and if it was accepted, state all evidence (material, testimonial, occupational, plats, records, other monuments) used as a basis for accepting. If not accepted or if nothing was found, state evidence used as basis for establishing location. If reestablished through lost corner proportionate methods, indicate all monuments, distances and directions used to establish.

Dug in blacktop pavement present werethe Town Chairman and one supervisor We located the 8" X 8" stone monument at a depth of about 6" . We placed a one inch iron pipe on the north side of the monument and covered. We accepted the stone as the corner as is the policy of Lincoln County and included in the traverse the distances checked well.

c) (d) (e) Plan view of corner with ties to at least 4 witness monuments. If in disagreement with previously established corner, show the distances between the two corners and also indicate the ties to the disputed corner.



(i) I, Edwin R. Abendroth RLS No. S-798
 (type or print name) certify that the corner location on this record was determined by me or under my direction and control and that this U.S. Public Land Survey Monument Record is correct and complete to the best of my knowledge and belief.

Edwin R. Abendroth July 17, 1990
 Signature Date

Index No. S-9