

LINCOLN COUNTY U.S. PUBLIC LAND CORNER RESTORATION

The Southeast corner of Section 29, T. 33 N., R. 8 E., Lincoln County, WI.

Corner was: (check all that apply)

- Restored through acceptance of an obliterated evidence location.
- Restored through acceptance of a found perpetuated location.
- Determined to be lost and re-established through proportionate methods.
Show bearings and distances to PLSS corners used for proportioning, and show original distances).
- Restored/recovered/re-established in a location that differs from a previously established position.
(Show difference in plan view below).
- Check here if additional information is shown on the reverse side of this form.

Describe record evidence, recovered physical evidence, occupational evidence, testimonial evidence and all other evidence considered in the recovery/restoration of the corner.

In Sept. 1986, Sheridan D. Schwark dug with a backhoe and found a 6" x 6" red granite monument with a 1" iron pipe over the top of it.
October 8, 2011. D. Tlusty Found PK nail in a road patch that worked well with two remaining ties of Schwark. Accepted nail as a perpetuation of the corner located and tied by Schwark. Added additional ties and measured to adjoining corners as shown below.

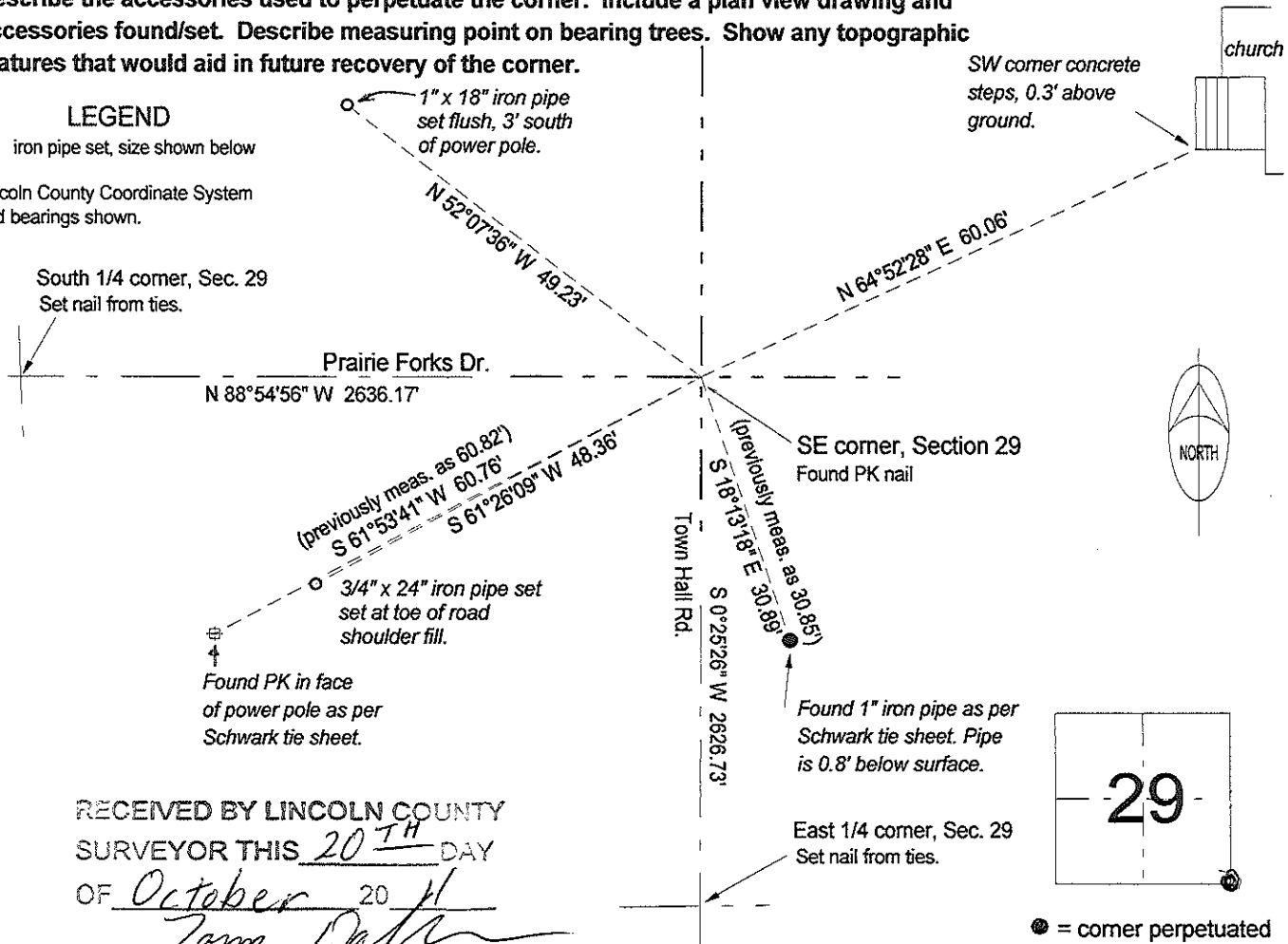


Physical description of the monument set:

Left existing nail in place.

Describe the accessories used to perpetuate the corner. Include a plan view drawing and accessories found/set. Describe measuring point on bearing trees. Show any topographic features that would aid in future recovery of the corner.

LEGEND
○ iron pipe set, size shown below
Lincoln County Coordinate System grid bearings shown.



RECEIVED BY LINCOLN COUNTY
SURVEYOR THIS 20TH DAY
OF October 2011
Tom Dalk
COUNTY SURVEYOR

I, David E. Tlusty, Wisconsin Registered Land Surveyor s-1390, certify that the corner location on this record was determined by me and that this U.S. Public Land Survey Monument Record is correct to the best of my knowledge and belief.

The Southeast corner of Section 29, T. 33 N., R. 8 E., Lincoln County, WI

U-9

U.S. PUBLIC LAND SURVEY MONUMENT RECORD

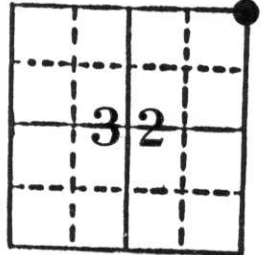
Note: This form is intended and designed to fulfill all requirements of Wisconsin Administrative Code, Chapter A-E 5.02, U.S. Public Land Survey Monument Record (3) (a) (b) (c) (d) (e) (f) (g) (h) (i). An additional sheet may be added if necessary to conform with said requirements.

(a) Corner location: Township 33 North

Range 8 East

Town Russell

County Lincoln

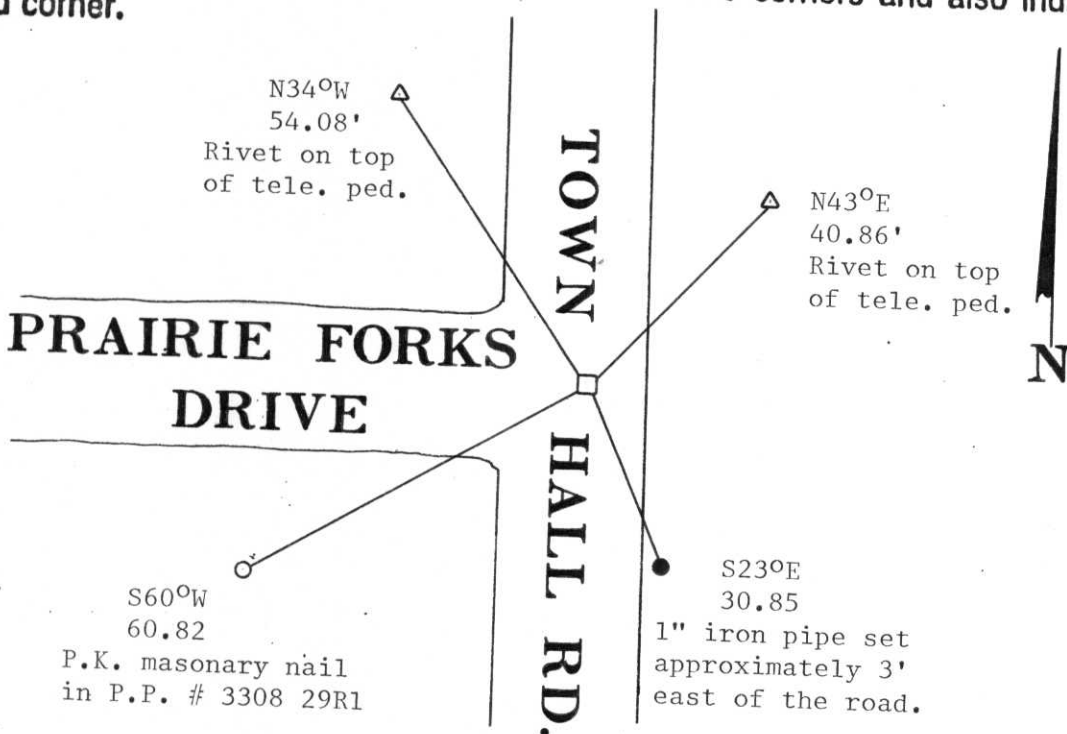


Section 32

b) (f) (g) (h) Description of monument found at this corner and if it was accepted, state all evidence (material, testimonial, occupational, plats, records, other monuments) used as a basis for accepting. If not accepted or if nothing was found, state evidence used as basis for establishing location. If reestablished through lost corner proportionate methods, indicate all monuments, distances and directions used to establish.

On September 3, 1986 we dug for the above corner with the assistance of Jack Prueser and his backhoe and found a 6" x 6" red granite monument with a 1" iron pipe over the top of it. It fit the roads well so we accepted it's location and referenced it in.

c) (d) (e) Plan view of corner with ties to at least 4 witness monuments. If in disagreement with previously established corner, show the distances between the two corners and also indicate the ties to the disputed corner.



(i) I, Sheridan D. Schwark
 (type or print name) certify that the corner location on this record was determined by me or under my direction and control and that this U.S. Public Land Survey Monument Record is correct and complete to the best of my knowledge and belief.

Sheridan D. Schwark
 Signature

December 6, 1986
 Date



Index No. 0-9