

CERTIFIED LAND CORNER RESTORATION

Index No. 5-13

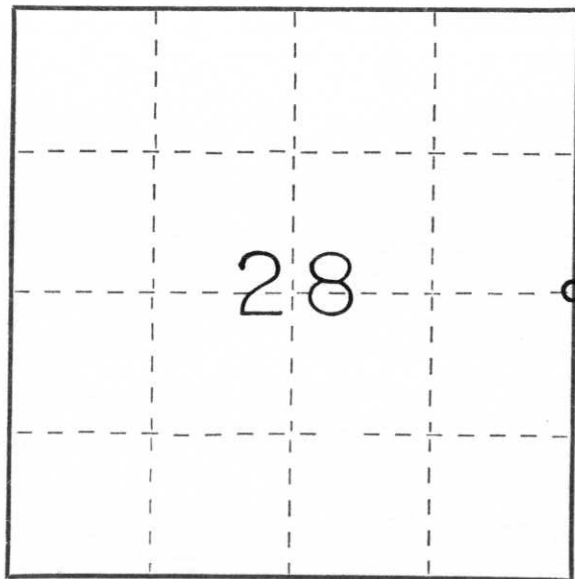
State of Wisconsin }
County of Lincoln } ss.

I Edwin R. Abendroth, do hereby certify that on the 10th day of July, 19 90, I found evidence of the East 1/4 corner of Section 28 Township 33, North, Range 8, Fourth, Principal Meridian, as described hereon; and that from this evidence I established a new monument and accessories as described hereon to perpetuate the original location of this corner.

Resident witnesses:

Chairman Leonard Ronis

Supervisor Schilke



○ = Corner monument restored.

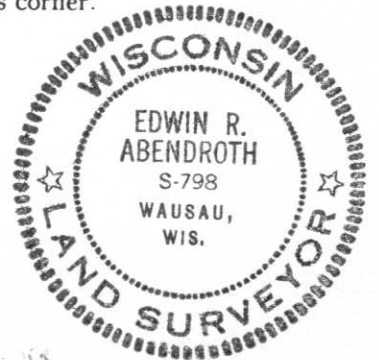
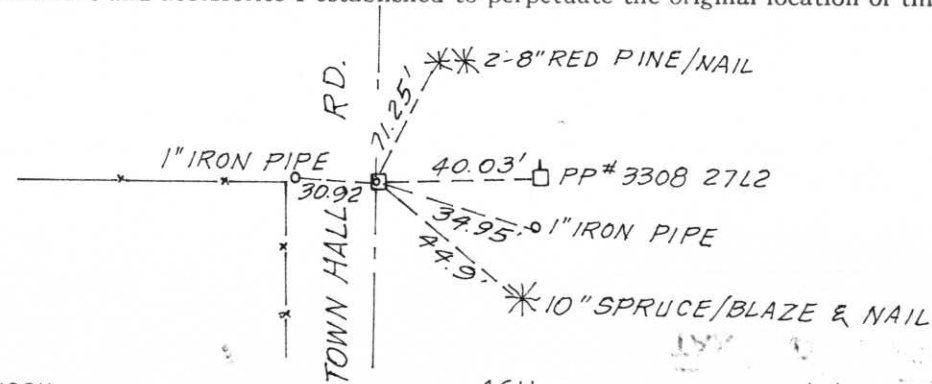
History of original corner establishment:

Original corner set in 1852 notes call for wood posts at all corners in Section 28. Wood posts were replaced with stone monuments, date unknown.

Description of corner evidence found:

Excavated roadway with backhoe at depth of 6" located stone (granite) in place but tipped reset stone at a deeper depth and straightened. placed magnetic disk on top of stone to aid in relocation

Description of monument and accessories I established to perpetuate the original location of this corner.



Dated at Wausau, Wis., this 16th day of July, 19 90

Signature Edwin R. Abendroth Surveyor Registration No. S-798
(County Surveyor, Registered Land Surveyor, or other duly authorized official)

Office of Register of Deeds, County of Lincoln, I hereby certify that the within instrument was filed in this office for record on the _____ day of _____, 19____ at _____ o'clock _____ M.

(Register of Deeds)

By _____ Deputy