

U.S. PUBLIC LAND SURVEY MONUMENT RECORD

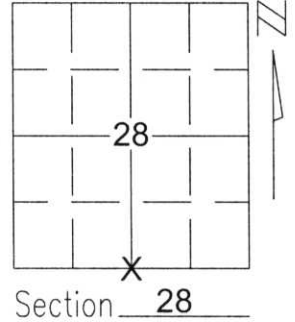
Note: This form is intended and designed to fulfill all requirements of Wisconsin Administrative Code, Chapter A-E 5.02, U.S. Public Land Survey Monument Record (3)(a)(b)(c)(d)(e)(f)(g)(h)(i). An additional sheet may be added if necessary to conform with said requirements.

(a) Corner location: Township 33 North

Range 8 East

Town/City/Village RUSSELL

County LINCOLN

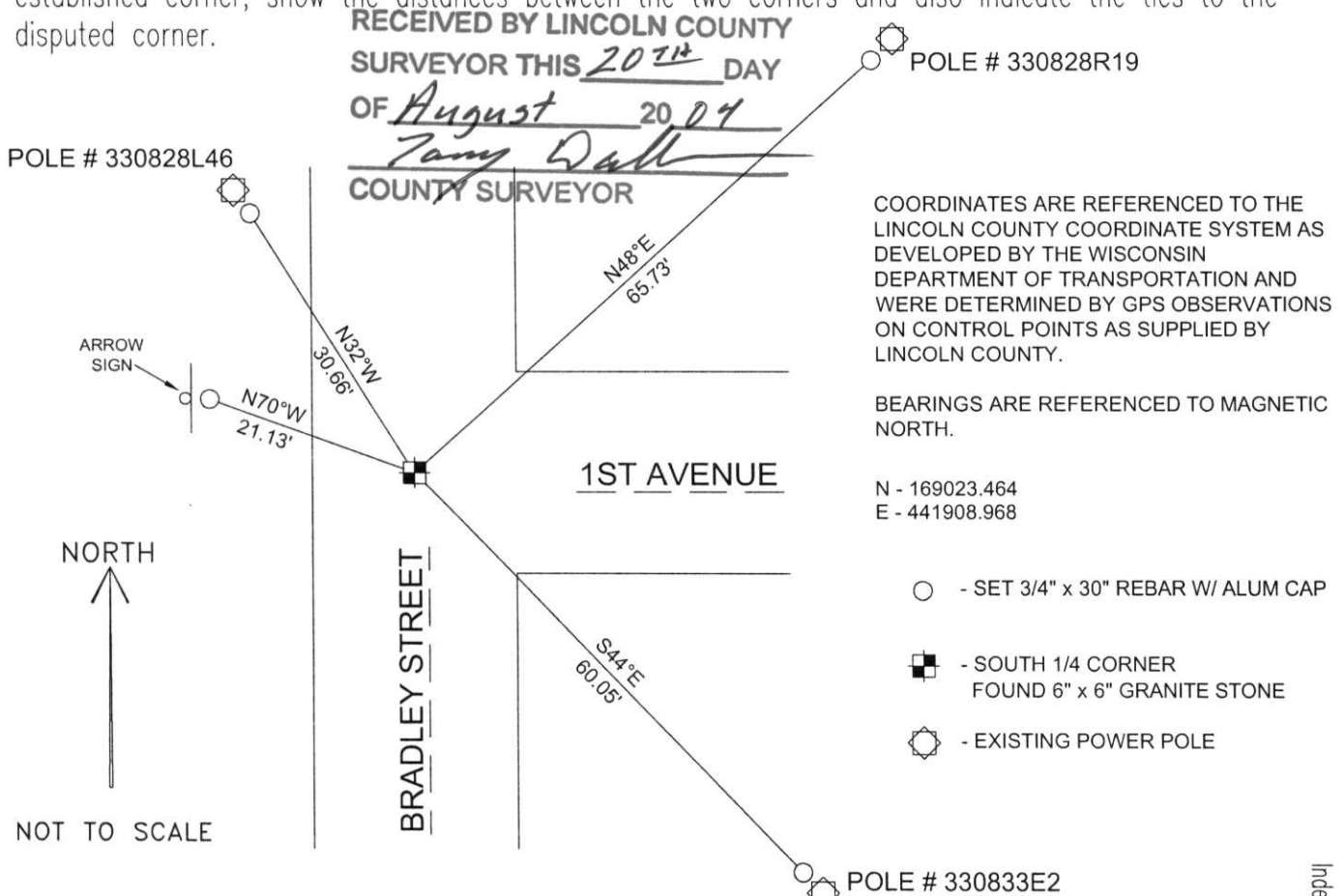


Section 28

(b)(f)(g)(h) Description of monument found at this corner and if it was accepted, state all evidence (material, testimonial, occupational, plats, records, other monuments) used as a basis for accepting. If not accepted or if nothing was found, state evidence used as basis for establishing location. If reestablished through lost corner proportionate methods, indicate all monuments, distances and directions used to establish.

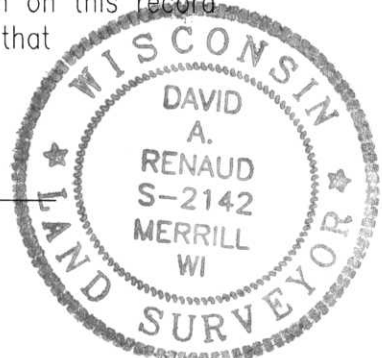
FOUND BAR CALLED FOR ON MANY SURVEYS. DUG WITH JACKHAMMER AND FOUND ROD TO BE INSIDE OF 1" IRON PIPE, DUG FURTHER AND FOUND 6" x 6" GRANITE STONE SOUTH OF PIPE. HELD STONE AS MONUMENT AND TIED OUT TO PERPETUATE CORNER LOCATION.

(c)(d)(e) Plan view of corner with ties to at least 4 witness monuments. If in disagreement with previously established corner, show the distances between the two corners and also indicate the ties to the disputed corner.



(i) I, David A. Renaud, RLS S-2142 certify that the corner location on this record was determined by me or under my direction and control and that this U.S. Public Land Survey Monument Record is correct and complete to the best of my knowledge and belief.

David Renaud 6-29-04
Signature Date



Index No. 283387

U-11

A photograph showing a circular hole in a grey asphalt surface. The hole is filled with brown soil. A white rectangular label is placed on the edge of the hole. The label has two lines of text: '283387' on the top line and '5/4/28-33-86' on the bottom line. A dark shadow of a person is cast on the asphalt to the right of the hole. The surrounding asphalt is dark grey with some small stones and debris. The soil inside the hole is a light brown color.

283387

5/4/28-33-86