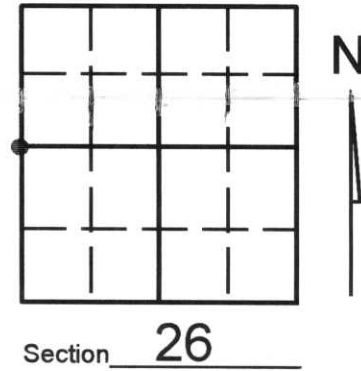


U.S. PUBLIC LAND SURVEY MONUMENT RECORD

Note: This form is intended and designed to fulfill all requirements of Wisconsin Administrative Code, Chapter A-E 7.08 U.S. Public Land Survey Monument Record (3)(a)(b)(c)(d)(e)(f)(g)(h)(i). An additional sheet may be added if necessary to conform with said requirements.

(a) Corner location: Township 33 North
 Range 08 (East) West

Town/City/Village RUSSELL
 County LINCOLN



(b) (f) (g) (h) Description of monument found at this corner and if it was accepted, state all evidence (material, testimonial, occupational, plats, records, other monuments) used as a basis for accepting. If not accepted or if nothing was found, state evidence used as basis for establishing location. If reestablished through lost corner proportionate methods, indicate all monuments, distances and directions used to establish. Indicate type of monument found or set and sign post.

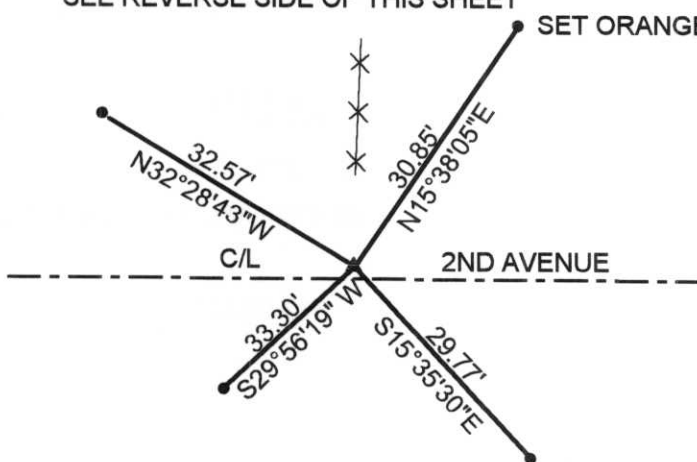
-GOV'T SURVEYOR- SET 1/4 SECTION POST AND MADE THE FOLLOWING B.T.s:
 18" BIRCH, S 85° E, 35 LINKS; 11" BIRCH, S 04° E, 25 LINKS.

- 2000 - KEVIN BIXBY SET P.K. NAIL AND WITNESS AS SHOWN BELOW.

RECEIVED AT LINCOLN COUNTY
 COURTHOUSE THIS 25TH DAY
 OF September 20 00
Zony Dellura
 LAND INFORMATION OFFICE

(c) (d) (e) Plan view of corner with ties to at least 4 witness monuments. If in disagreement with previously established corner, show the distances between the two corners and also indicate the ties to the disputed corner.

NOTE: BEARINGS AND DISTANCES MEASURED WITH TOTAL STATION. NO SCALE.
 SEE REVERSE SIDE OF THIS SHEET



LEGEND

- ▲ SET P.K. NAIL
- SET LINCOLN COUNTY WITNESS MONUMENT
- *-*-* EXISTING BARBED WIRE FENCE



(i) I, KEVIN P. BIXBY

(type or print name) certify that the corner location on this record was determined by me or under my direction and control and that this U.S. Public Land Survey Monument Record is correct and complete to the best of my knowledge and belief.



Kevin P. Bixby
 Signature

09/20/00
 Date

Stamp

Index No. S-17

U.S. PUBLIC LAND SURVEY MONUMENT RECORD

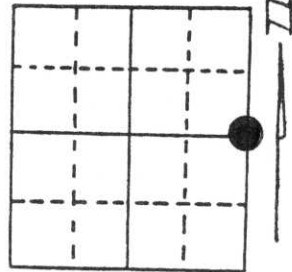
Note: This form is intended and designed to fulfill all requirements of Wisconsin Administrative Code, Chapter A-E 5.02, U.S. Public Land Survey Monument Record (3) (a) (b) (c) (d) (e) (f) (g) (h) (i). An additional sheet may be added if necessary to conform with said requirements.

(a) Corner location: Township 33 North

Range 8 East

Town/City/Village tn. of russell

County lincoln



Section 27

(b) (f) (g) (h) Description of monument found at this corner and if it was accepted, state all evidence (material, testimonial, occupational, plats, records, other monuments) used as a basis for accepting. If not accepted or if nothing was found, state evidence used as basis for establishing location. If reestablished through lost corner proportionate methods, indicate all monuments, distances and directions used to establish.

corner history on record in Lincoln County Surveyors Office

April 1997 dug for corner at intersection of fence line to south and tree line to north. Excavated well into original soil layers found no evidence of corner.

(c) (d) (e) Plan view of corner with ties to at least 4 witness monuments. If in disagreement with previously established corner, show the distances between the two corners and also indicate the ties to the disputed corner.

RECEIVED AT LINCOLN COUNTY
COURTHOUSE THIS 5th DAY
OF June 19 97
Pat Priebe
TAX DESCRIPTION OFFICE



(i) I, David L. Lenke S-1845

(type or print name) certify that the corner location on this record was determined by me or under my direction and control and that this U.S. Public Land Survey Monument Record is correct and complete to the best of my knowledge and belief.

Signature *David L. Lenke*

MAY 30 1997

Date

Index No. S-17

NW CORNER SEC. 26

2636.17'

5272.34'

C/L 2ND AVENUE
W. 1/4 SEC. 26

N00°40'44"W

2636.17'

C/L 1ST AVENUE
SW CORNER SEC. 26
(ACCEPTED BY LOCAL TESTIMONY)



LEGEND

- ▲ SET P.K. NAIL
- FOUND GRANITE MONUMENT

NO SCALE

