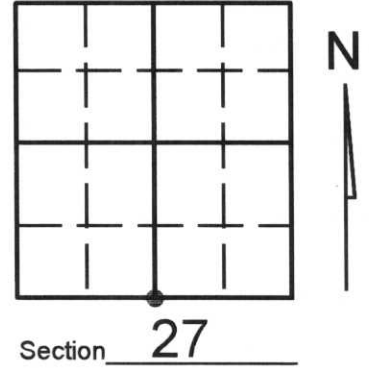


U.S. PUBLIC LAND SURVEY MONUMENT RECORD

Note: This form is intended and designed to fulfill all requirements of Wisconsin Administrative Code, Chapter A-E 7.08 U.S. Public Land Survey Monument Record (3)(a)(b)(c)(d)(e)(f)(g)(h)(i). An additional sheet may be added if necessary to conform with said requirements.

(a) Corner location: Township 33 North
 Range 08 (East) West

Town/City/Village RUSSELL
 County LINCOLN



(b) (f) (g) (h) Description of monument found at this corner and if it was accepted, state all evidence (material, testimonial, occupational, plats, records, other monuments) used as a basis for accepting. If not accepted or if nothing was found, state evidence used as basis for establishing location. If reestablished through lost corner proportionate methods, indicate all monuments, distances and directions used to establish. Indicate type of monument found or set and sign post.

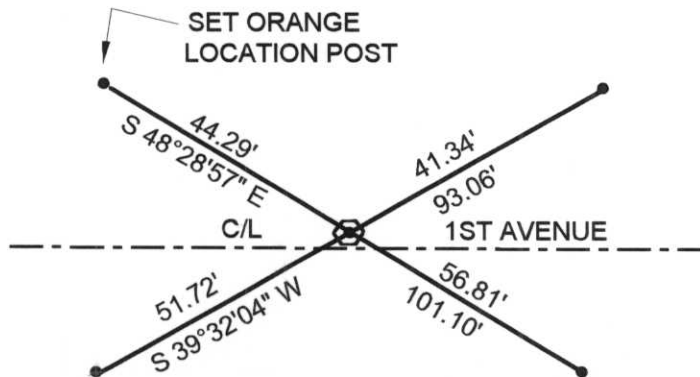
-ORIGINAL GOV'T SURVEY- SET 1/4 POST AND MADE THE FOLLOWING B.T.s:
 20" HEMLOCK, S 06° E, 9 LINKS, 10" BIRCH, N 40° E, 17 LINKS.

- 2000 - KEVIN BIXBY FOUND 6" x 6" GRANITE MONUMENT AND WITNESSED AS SHOWN BELOW

RECEIVED AT LINCOLN COUNTY
 COURTHOUSE THIS 28TH DAY
 OF August 2000
Tony Walker
 LAND INFORMATION OFFICE

(c) (d) (e) Plan view of corner with ties to at least 4 witness monuments. If in disagreement with previously established corner, show the distances between the two corners and also indicate the ties to the disputed corner.

NOTE: BEARINGS AND DISTANCES MEASURED WITH TOTAL STATION. NO SCALE.
 SET 1" x 24" IRON PIPE ON NORTH SIDE OF GRANITE.



LEGEND
 ⬡ FOUND 6" x 6" GRANITE MONUMENT
 • SET LINCOLN COUNTY WITNESS MONUMENT



(i) I, KEVIN P. BIXBY

(type or print name) certify that the corner location on this record was determined by me or under my direction and control and that this U.S. Public Land Survey Monument Record is correct and complete to the best of my knowledge and belief.



Index No. 0-15

Kevin P. Bixby
 Signature Date 08/21/00

MARKER
REVEY

23338754 2.3.3.86

