

CERTIFIED LAND CORNER RESTORATION

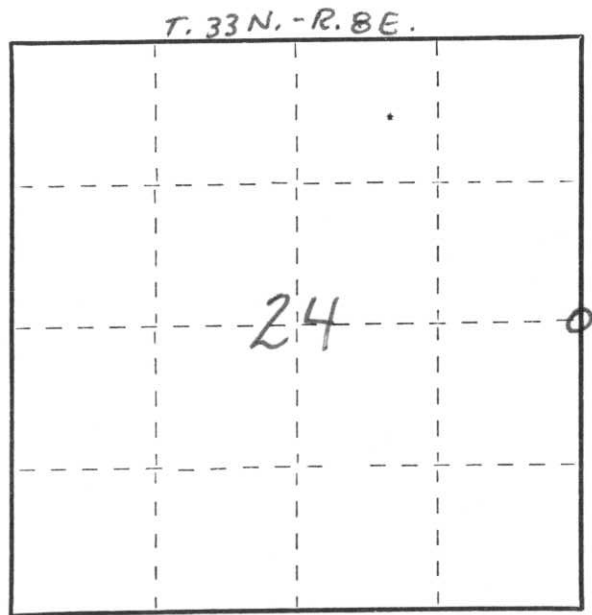
Index No. 0-25

State of Wisconsin }  
 County of LINCOLN } ss.

I WILLIAM F. KELLY, do hereby certify that on the 23RD day of SEPTEMBER, 1977, I found evidence of the 1/4 SECTION corner of SECTIONS 24 & 19 Township 33, North, Range 8 & 9 E, Fourth Principal Meridian, as described hereon; and that from this evidence I established a new monument and accessories as described hereon to perpetuate the original location of this corner.

Resident witnesses:

FORM 985 M. C. MILLER CO., MILWAUKEE



○ = Corner monument restored.

History of original corner establishment:

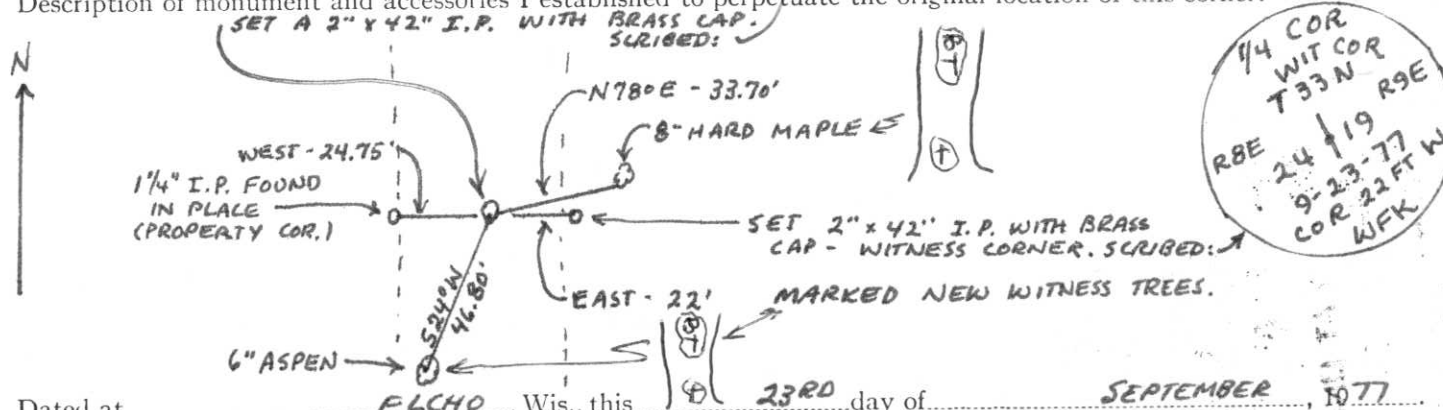


*William F. Kelly 9-23-77*

Description of corner evidence found:  
**LOLATED GRANITE MONUMENT BROKEN IN PIECES. EXCAVATED AND FOUND BOTTOM PART OF MONUMENT.**



Description of monument and accessories I established to perpetuate the original location of this corner.



Dated at ELCHO, Wis., this 23RD day of SEPTEMBER, 1977

Signature William F. Kelly Title REGISTERED LAND SURVEYOR Registration No. S1098  
 (County Surveyor, Registered Land Surveyor, or other duly authorized official)

Office of Register of Deeds, County of \_\_\_\_\_, I hereby certify that the within instrument was filed in this office for record on the \_\_\_\_\_ day of \_\_\_\_\_, 19\_\_\_\_ at \_\_\_\_\_ o'clock \_\_\_\_\_ M.

\_\_\_\_\_  
 (Register of Deeds)  
 By \_\_\_\_\_ Deputy