

# U.S. PUBLIC LAND SURVEY MONUMENT RECORD

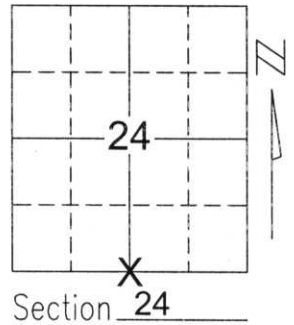
Note: This form is intended and designed to fulfill all requirements of Wisconsin Administrative Code, Chapter A-E 5.02, U.S. Public Land Survey Monument Record (3)(a)(b)(c)(d)(e)(f)(g)(h)(i). An additional sheet may be added if necessary to conform with said requirements.

(a) Corner location: Township 33 North

Range 8 East

Town/City/Village RUSSELL

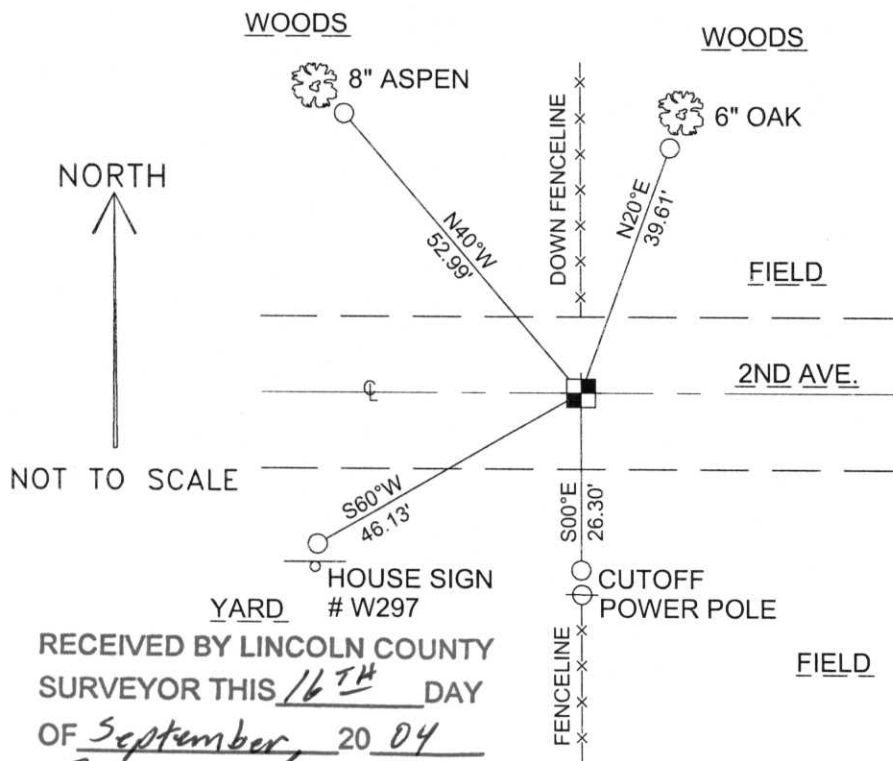
County LINCOLN



(b)(f)(g)(h) Description of monument found at this corner and if it was accepted, state all evidence (material, testimonial, occupational, plats, records, other monuments) used as a basis for accepting. If not accepted or if nothing was found, state evidence used as basis for establishing location. If reestablished through lost corner proportionate methods, indicate all monuments, distances and directions used to establish.

SEARCHED FOR CORNER WITH COUNTY GRADALL. DUG AT THE INTERSECTION OF THE FENCELINES EXTENDED NORTH AND SOUTH AND THE CENTERLINE OF 2ND AVENUE AND PRORATED DISTANCE. FOUND NO EVIDENCE OF CORNER. TALKED WITH LONG TIME RESIDENT AND HE SAID THAT HE REBUILT THE FENCE TO THE SOUTH ±40 YEARS AGO AND THE PREVIOUS FENCE WAS VERY OLD. SET BERNSTEN AT THE INTERSECTION OF THE FENCELINES EXTENDED AND THE CENTERLINE OF 2ND AVENUE AS BEST AVAILABLE EVIDENCE. TIED OUT TO PERPETUATE CORNER LOCATION.

(c)(d)(e) Plan view of corner with ties to at least 4 witness monuments. If in disagreement with previously established corner, show the distances between the two corners and also indicate the ties to the disputed corner.



COORDINATES ARE REFERENCED TO THE LINCOLN COUNTY COORDINATE SYSTEM AS DEVELOPED BY THE WISCONSIN DEPARTMENT OF TRANSPORTATION AND WERE DETERMINED BY GPS OBSERVATIONS ON CONTROL POINTS AS SUPPLIED BY LINCOLN COUNTY.

BEARINGS ARE REFERENCED TO MAGNETIC NORTH.

N - 174249.922  
E - 457785.364

○ - SET 3/4" x 30" REBAR W/ ALUM CAP

■ - SOUTH 1/4 CORNER SET BERNSTEN

NOT TO SCALE

RECEIVED BY LINCOLN COUNTY SURVEYOR THIS 16<sup>TH</sup> DAY OF September 20 04

Jerry Dall



(i) COUNTY SURVEYOR certifies that the corner location on this record was determined by me or under my direction and control and that this U.S. Public Land Survey Monument Record is correct and complete to the best of my knowledge and belief.

David Renaud 9-15-04  
Signature Date