

CERTIFIED LAND CORNER RESTORATION

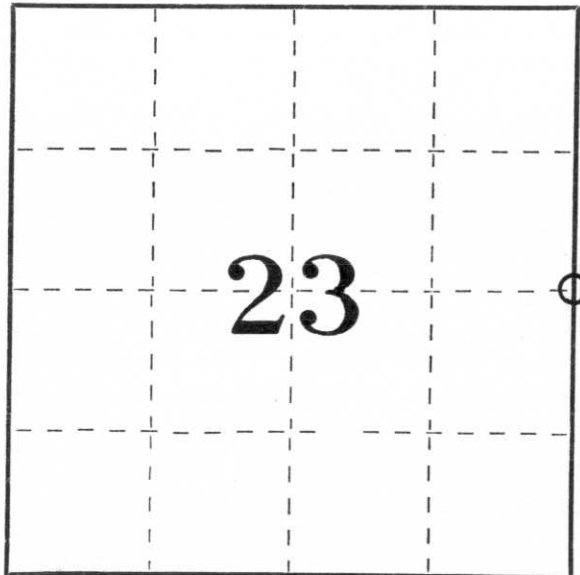
Index No. 0-21

State of Wisconsin }
County of Lincoln } ss.

I Sheridan D. Schwark do hereby certify that on the 9 th day of October 19 80, I found evidence of the East one-quarter corner of Section 23 Township 33, North, Range 8 East, Fourth, Principal Meridian, as described hereon; and that from this evidence I established a new monument and accessories as described hereon to perpetuate the original location of this corner.

Resident witnesses:

.....
.....
.....



○ = Corner monument restored.

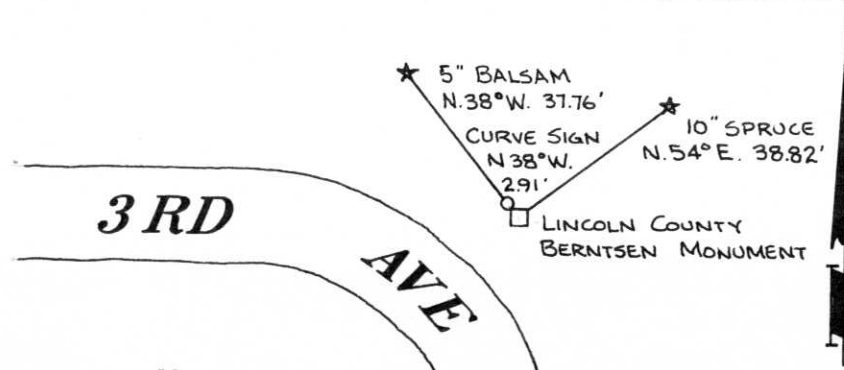
History of original corner establishment:

Wood post set by original government surveyor.

Description of corner evidence found:

We found a 6" x 6" granite monument which was tipped northerly, as we dug it out we found that the top 22" had broken off of the lower portion, we found the remaining 14" base and reset a Lincoln County Berntsen Monument in the same location. We also set a "Survey Marker" sign.

Description of monument and accessories I established to perpetuate the original location of this corner.



Dated at Merrill, Wis., this 23rd day of October, 1980

Signature Sheridan D. Schwark Title Registered Land Surveyor Registration No. S-1205
(County Surveyor, Registered Land Surveyor, or other duly authorized official)

Office of Register of Deeds, County of _____, I hereby certify that the within instrument was filed in this office for record on the _____ day of _____, 19____ at _____ o'clock _____ M.

.....
(Register of Deeds)

By _____ Deputy

LINCOLN COUNTY U.S. PUBLIC LAND CORNER RESTORATION

The East Quarter corner of Section 23, T. 33 N., R. 8 E., Lincoln County, WI.

Corner was: (check all that apply)

- Restored through acceptance of an obliterated evidence location.
- Restored through acceptance of a found perpetuated location.
- Determined to be lost and re-established through proportionate methods.
(Show bearings and distances to PLSS corners used for proportioning, and show original distances).
- Restored/recovered/re-established in a location that differs from a previously established position.
(Show difference in plan view below).
- Check here if addition information is shown on the reverse side of this form.

Describe record evidence, recovered physical evidence, occupational evidence, testimonial evidence and all other evidence considered in the recovery/restoration of the corner.

In 1980, Sheridan D. Schwark found the base of a 6" x 6" granite monument and reset a Lincoln County Berntsen Monument in the same location.
September 2004, D. Tlusty found a 4" aluminum capped monument stamped "23 | 24". It falls 2.9 feet SE of a road curve sign as shown on Schwarks tie sheet. Accepted this found monument as the one set by Schwark and as the best evidence of a previously perpetuated location of the quarter corner.

Physical description of the monument set:

Left existing monument in place.

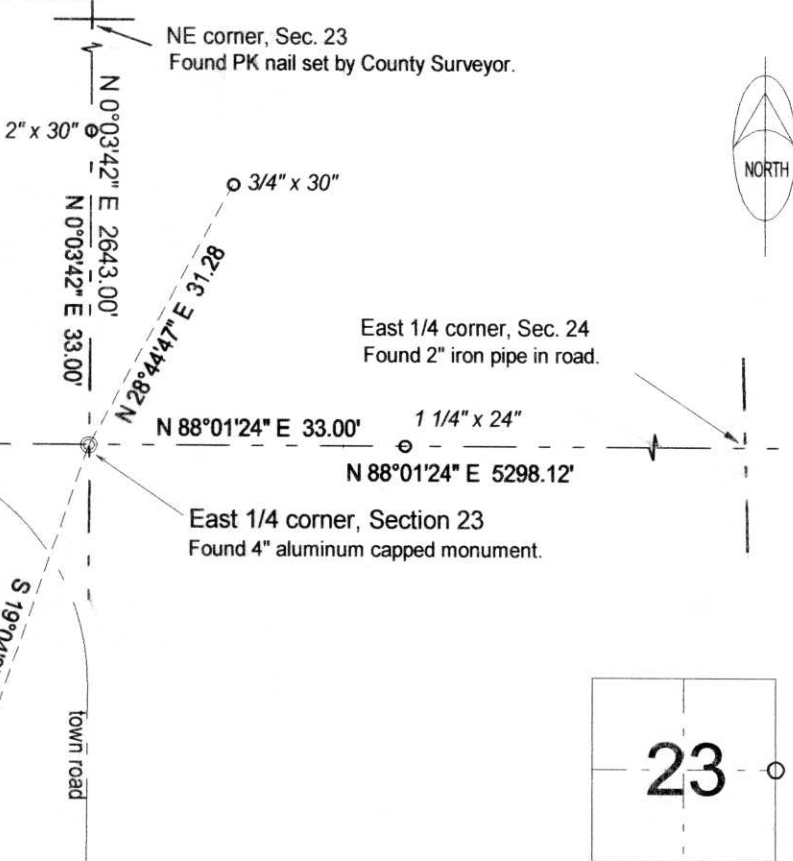
Describe the accessories used to perpetuate the corner. Include a plan view drawing and accessories found/set. Describe measuring point on bearing trees. Show any topographic features that would aid in future recovery of the corner.

LEGEND

○ iron pipe set, size shown below

Lincoln County Coordinate System
grid bearings shown.

RECEIVED BY LINCOLN COUNTY
SURVEYOR THIS 10TH DAY
OF December 2004
Tony Dell
COUNTY SURVEYOR



3/4" x 24" ○
set at north end of
eastmost row of small
spruce trees.

○ = corner perpetuated

The East Quarter
corner of Section 23,
T. 33 N., R. 8 E.,
Lincoln County, WI

I, David E. Tlusty, Wisconsin Registered Land Surveyor s-1390,
certify that the corner location on this record was determined by me and that
this U.S. Public Land Survey Monument Record is correct to the best of my
knowledge and belief.

0-21