

U.S. PUBLIC LAND SURVEY MONUMENT RECORD

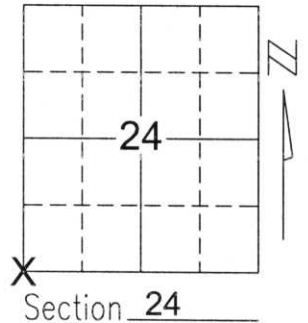
Note: This form is intended and designed to fulfill all requirements of Wisconsin Administrative Code, Chapter A-E 5.02, U.S. Public Land Survey Monument Record (3)(a)(b)(c)(d)(e)(f)(g)(h)(i). An additional sheet may be added if necessary to conform with said requirements.

(a) Corner location: Township 33 North

Range 8 East

Town/City/Village RUSSELL

County LINCOLN



(b)(f)(g)(h) Description of monument found at this corner and if it was accepted, state all evidence (material, testimonial, occupational, plats, records, other monuments) used as a basis for accepting. If not accepted or if nothing was found, state evidence used as basis for establishing location. If reestablished through lost corner proportionate methods, indicate all monuments, distances and directions used to establish.

SEARCHED FOR CORNER WITH COUNTY GRADALL.

FOUND STONE 1' BELOW ROAD GRADE. SET 1-1/4" BAR ON NORTH SIDE OF STONE TO AID IN LOCATION.

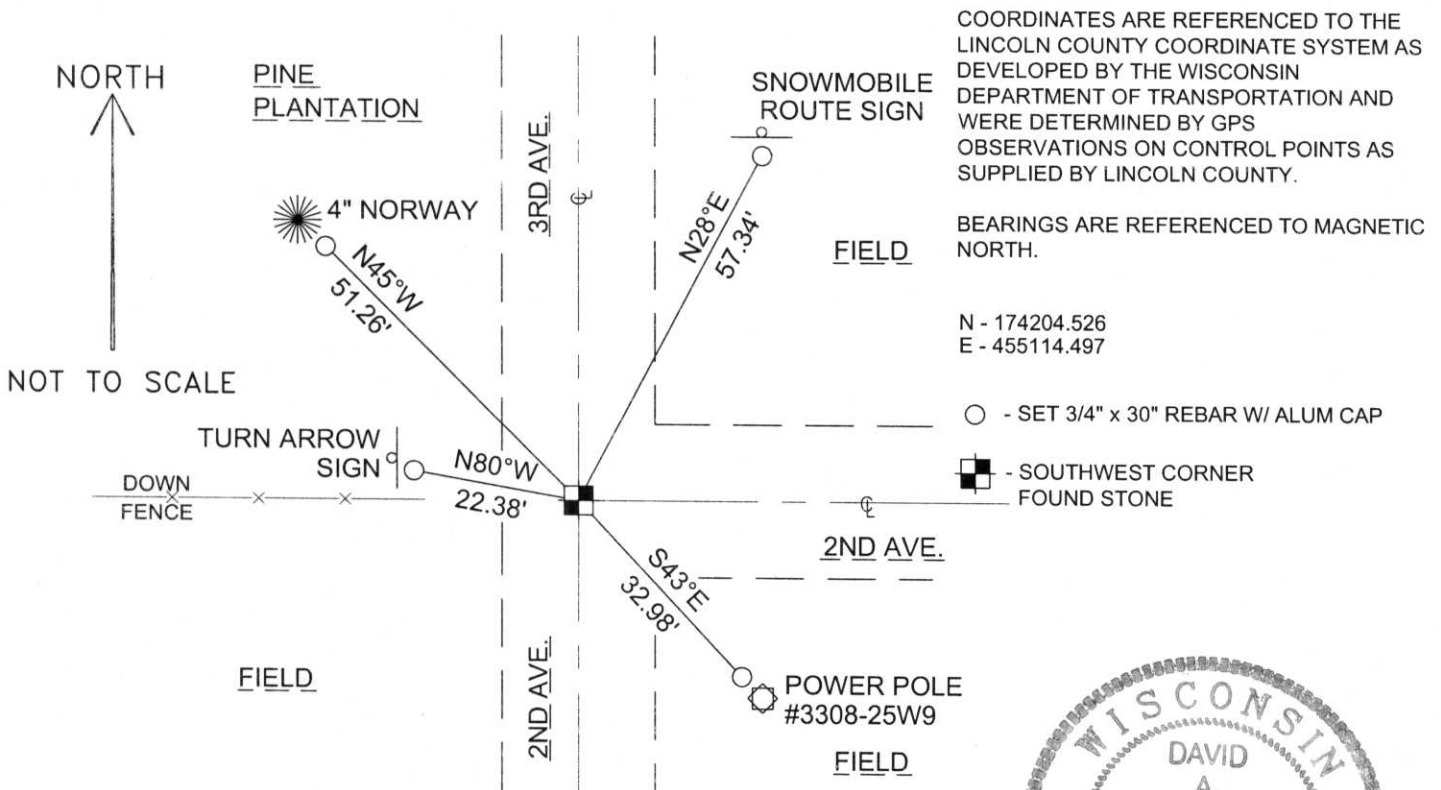
ACCEPTED STONE AS CORNER AND TIED OUT TO PERPETUATE CORNER LOCATION.

RECEIVED BY LINCOLN COUNTY SURVEYOR THIS 16TH DAY

OF September 20 04

David A. Renaud
COUNTY SURVEYOR

(c)(d)(e) Plan view of corner with ties to at least 4 witness monuments. If in disagreement with previously established corner, show the distances between the two corners and also indicate the ties to the disputed corner.



(i) I, David A. Renaud, RLS certify that the corner location on this record was determined by me or under my direction and control and that this U.S. Public Land Survey Monument Record is correct and complete to the best of my knowledge and belief.

David Renaud 9-15-04
Signature Date



243386 Q-21



SW 24-33N-8E STA. ID: 243386

SOKKI