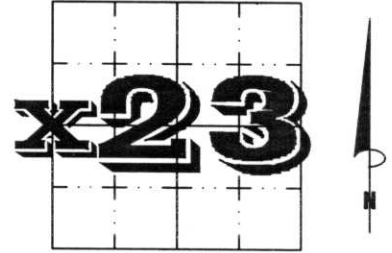


U.S. PUBLIC LAND SURVEY MONUMENT RECORD

NOTE: THIS FORM IS INTENDED AND DESIGNED TO FULFILL ALL REQUIREMENTS OF WISCONSIN ADMINISTRATIVE CODE, CHAPTER A-E 7.08 U.S. PUBLIC LAND SURVEY MONUMENT RECORD (3) (a) (b) (c) (d) (e) (f) (g) (h) (i). AN ADDITIONAL SHEET MAY BE ADDED IF NECESSARY TO CONFORM WITH SAID REQUIREMENTS.

(a) CORNER LOCATION: TOWNSHIP 33 NORTH
 RANGE 8 EAST/WEST
 TOWN/CITY/VILLAGE RUSSELL
 COUNTY LINCOLN



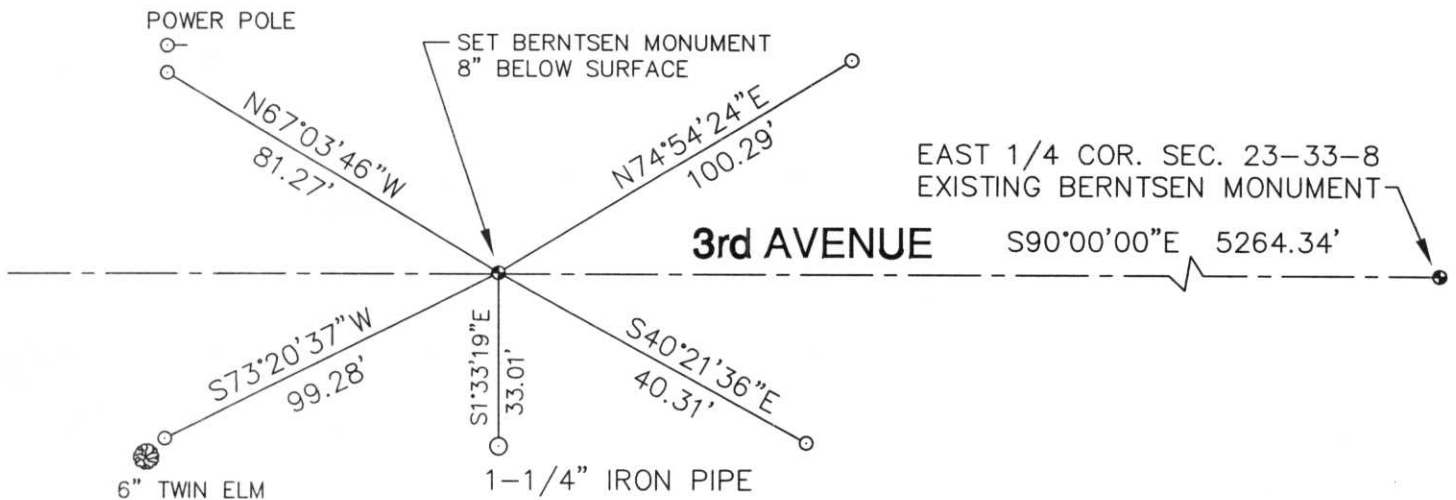
SECTION 23

(b) (f) (g) (h) DESCRIPTION OF MONUMENT FOUND AT THIS CORNER AND IF IT WAS ACCEPTED, STATE ALL EVIDENCE (MATERIAL, TESTIMONIAL, OCCUPATIONAL, PLATS, RECORDS, OTHER MONUMENTS) USED AS BASIS FOR ACCEPTING. IF NOT ACCEPTED OR IF NOTHING WAS FOUND, STATE EVIDENCE USED AS BASIS FOR ESTABLISHING LOCATION. IF REESTABLISHED THROUGH LOST CORNER PROPORTIONATE METHODS, INDICATE ALL MONUMENTS, DISTANCES AND DIRECTIONS USED TO ESTABLISH. INDICATE TYPE OF MONUMENT FOUND OR SET AND SIGN POST.

DUG WITH BACKHOE, THROUGH GRANITE ROAD, SAND LIFT. IN UNDISTURBED SOIL, FOUND 16" PIECE OF 6" x 6" GRANITE STONE, LAYING DOWN. TIED OUT, DUG DEEPER, FOUND ANOTHER 16" PIECE, IN A DIFFERENT LOCATION. HELD FIRST PIECE, AS IT WAS ON CENTER LINE OF ROAD. SET BERNTSEN MONUMENT, TIED OUT, PAINTED EVERYTHING RED. LEFT PIECES OF GRANITE STONE IN BOTTOM OF HOLE.

**RECEIVED AT LINCOLN COUNTY
 COURTHOUSE THIS 23rd DAY
 OF Sept 19 99
Pat Priebe
 LAND INFORMATION OFFICE**

(c) (d) (e) PLAN VIEW OF CORNER WITH TIES TO AT LEAST 4 WITNESS MONUMENTS. IF IN DISAGREEMENT WITH PREVIOUSLY ESTABLISHED CORNER, SHOW THE DISTANCES BETWEEN THE TWO CORNERS AND ALSO INDICATE THE TIES TO THE DISPUTED CORNER.



(i) I, DAVID L. OSTERBRINK RLS
 (TYPE OR PRINT NAME) CERTIFY THAT THE CORNER LOCATION ON THIS RECORD WAS DETERMINED BY ME OR UNDER MY DIRECTION AND CONTROL AND THAT THIS U.S. PUBLIC LAND SURVEY MONUMENT RECORD IS CORRECT AND COMPLETE TO THE BEST OF MY KNOWLEDGE AND BELIEF.

David L. Osterbrink
 SIGNATURE

9-23-99
 DATE



INDEX NO. 0-17