

U.S. PUBLIC LAND SURVEY MONUMENT RECORD

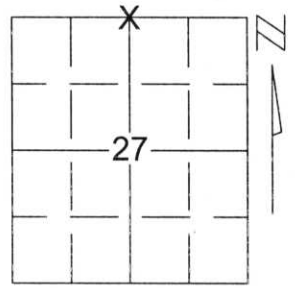
Note: This form is intended and designed to fulfill all requirements of Wisconsin Administrative Code, Chapter A-E 5.02, U.S. Public Land Survey Monument Record (3)(a)(b)(c)(d)(e)(f)(g)(h)(i). An additional sheet may be added if necessary to conform with said requirements.

(a) Corner location: Township 33 North

Range 8 East

Town/City/Village RUSSEL L

County LINCOLN



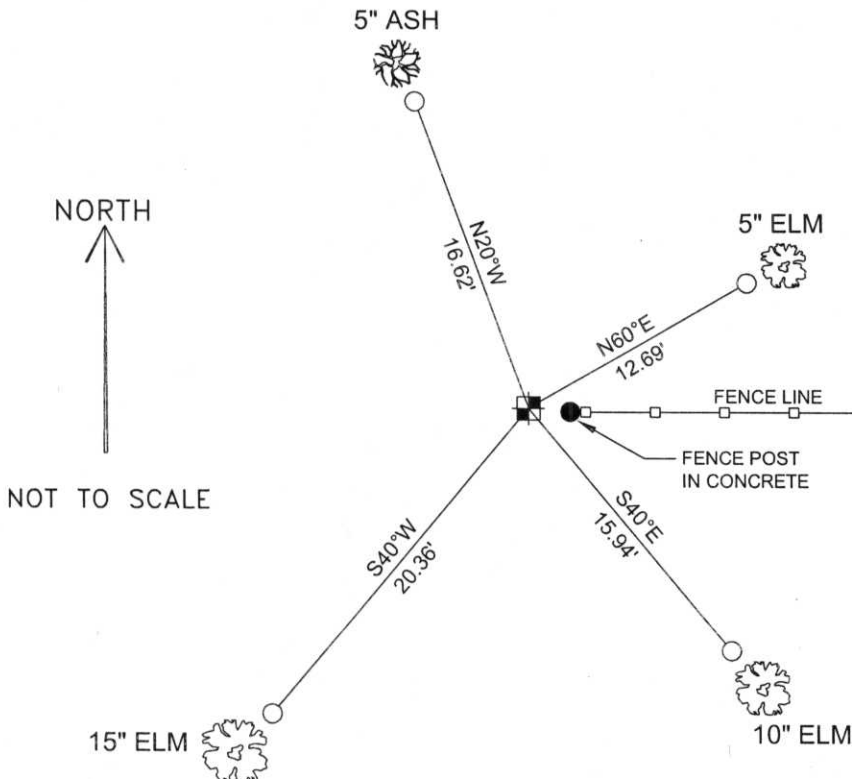
Section 27

(b)(f)(g)(h) Description of monument found at this corner and if it was accepted, state all evidence (material, testimonial, occupational, plats, records, other monuments) used as a basis for accepting. If not accepted or if nothing was found, state evidence used as basis for establishing location. If reestablished through lost corner proportionate methods, indicate all monuments, distances and directions used to establish.

SEARCHED FOR CORNER AND FOUND 6" x 6" GRANITE STONE AT END OF FENCE LINE. ACCEPTED STONE LOCATION AS CORNER, AND TIED OUT TO PERPETUATE CORNER LOCATION.

RECEIVED BY LINCOLN COUNTY
SURVEYOR THIS 16TH DAY
OF September 20 04
Tony Dahl
COUNTY SURVEYOR

(c)(d)(e) Plan view of corner with ties to at least 4 witness monuments. If in disagreement with previously established corner, show the distances between the two corners and also indicate the ties to the disputed corner.



COORDINATES ARE REFERENCED TO THE LINCOLN COUNTY COORDINATE SYSTEM AS DEVELOPED BY THE WISCONSIN DEPARTMENT OF TRANSPORTATION AND WERE DETERMINED BY GPS OBSERVATIONS ON CONTROL POINTS AS SUPPLIED BY LINCOLN COUNTY.

BEARINGS ARE REFERENCED TO MAGNETIC NORTH.

N - 174268.342
E - 447231.561

- - SET 3/4" x 30" REBAR W/ ALUM CAP AT BASE OF BEARING TREE
- - NORTH 1/4 CORNER FOUND 6" x 6" GRANITE STONE

(i) I, David A. Renaud, RLS S-2142 certify that the corner location on this record was determined by me or under my direction and control and that this U.S. Public Land Survey Monument Record is correct and complete to the best of my knowledge and belief.

David Renaud 9-15-04
Signature Date



Index No. 273382

Q-15

