

# U.S. PUBLIC LAND SURVEY MONUMENT RECORD

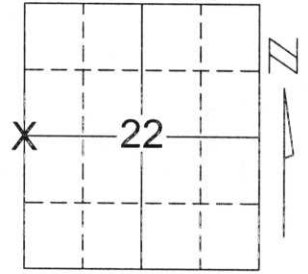
Note: This form is intended and designed to fulfill all requirements of Wisconsin Administrative Code, Chapter A-E 5.02, U.S. Public Land Survey Monument Record (3)(a)(b)(c)(d)(e)(f)(g)(h)(i). An additional sheet may be added if necessary to conform with said requirements.

(a) Corner location: Township 33 North

Range 8 East

Town/City/Village RUSSELL

County LINCOLN



Section 22

(b)(f)(g)(h) Description of monument found at this corner and if it was accepted, state all evidence (material, testimonial, occupational, plats, records, other monuments) used as a basis for accepting. If not accepted or if nothing was found, state evidence used as basis for establishing location. If reestablished through lost corner proportionate methods, indicate all monuments, distances and directions used to establish.

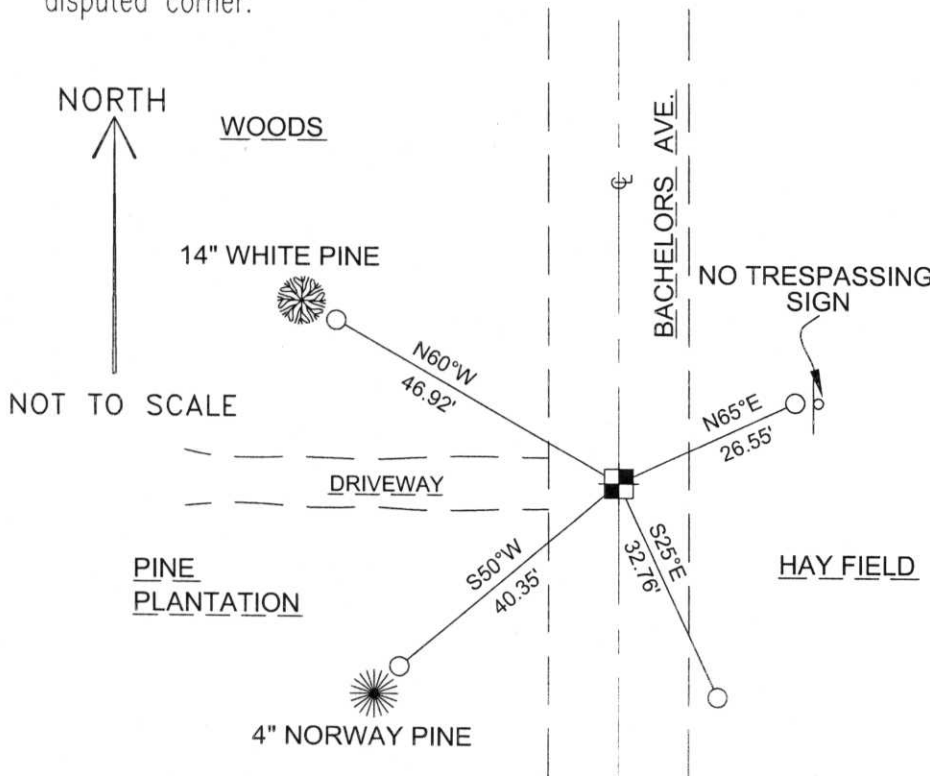
SEARCHED FOR CORNER WITH COUNTY GRADALL. FOUND STONE IN GOOD CONDITION 2' BELOW ROAD GRADE. SET 1-1/4" BAR ON NORTH SIDE OF STONE TO AID IN LOCATION. ACCEPTED STONE AS CORNER AND TIED OUT TO PERPETUATE CORNER LOCATION.

RECEIVED BY LINCOLN COUNTY SURVEYOR THIS 16<sup>TH</sup> DAY

OF September 20 04

Tommy Dahl

(c)(d)(e) Plan view of corner with ties to at least 4 witness monuments. If in disagreement with previously established corner, show the distances between the two corners and also indicate the ties to the disputed corner.



COORDINATES ARE REFERENCED TO THE LINCOLN COUNTY COORDINATE SYSTEM AS DEVELOPED BY THE WISCONSIN DEPARTMENT OF TRANSPORTATION AND WERE DETERMINED BY GPS OBSERVATIONS ON CONTROL POINTS AS SUPPLIED BY LINCOLN COUNTY.

BEARINGS ARE REFERENCED TO MAGNETIC NORTH.

N - 176891.934  
E - 444600.1755

○ - SET 3/4" x 30" REBAR W/ ALUM CAP

■ - WEST 1/4 CORNER FOUND STONE



(i) I, David A. Renaud, RLS certify that the corner location on this record was determined by me or under my direction and control and that this U.S. Public Land Survey Monument Record is correct and complete to the best of my knowledge and belief.

David Renaud 9-15-04  
Signature Date

223384

0-13

WEST 1/4 CORNER 22-33N-8E

The image shows a construction site with a dirt area. A wooden stake is placed vertically in the ground, with the text "WEST 1/4 CORNER 22-33N-8E" written on it. To the left, a yellow level is visible. The background shows a dirt path and some green grass.