

Attachment to Tie Sheet Q-09, T33N, R8E

43308200000

I visited the corner on 8/08/2018, before scheduled road work, to verify the corner and reference tie monumentation. I found the Berntsen Monument, and all 4 ties from REI's tie sheet (12/23/2004). The established Coordinates and 2 of the ties agree with existing monument.

Northeasterly witness measures 33.82', shown as 33.62' on Tie Sheet.

Southwesterly witness measures 51.85', shown as 51.98' on Tie Sheet.

I returned on 7/25/2019 to place a new SMN-1 at corner location.

 8/14/19

Anthony R. Dallman, PLS-2405

Lincoln County Surveyor



U.S. PUBLIC LAND SURVEY MONUMENT RECORD

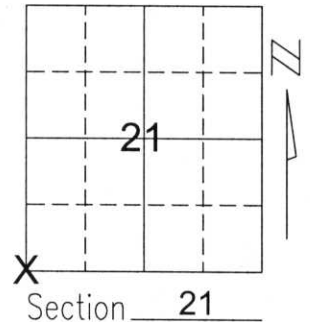
Note: This form is intended and designed to fulfill all requirements of Wisconsin Administrative Code, Chapter A-E 5.02, U.S. Public Land Survey Monument Record (3)(a)(b)(c)(d)(e)(f)(g)(h)(i). An additional sheet may be added if necessary to conform with said requirements.

(a) Corner location: Township 33 North

Range 8 East

Town/City/Village RUSSELL

County LINCOLN



(b)(f)(g)(h) Description of monument found at this corner and if it was accepted, state all evidence (material, testimonial, occupational, plats, records, other monuments) used as a basis for accepting. If not accepted or if nothing was found, state evidence used as basis for establishing location. If reestablished through lost corner proportionate methods, indicate all monuments, distances and directions used to establish.

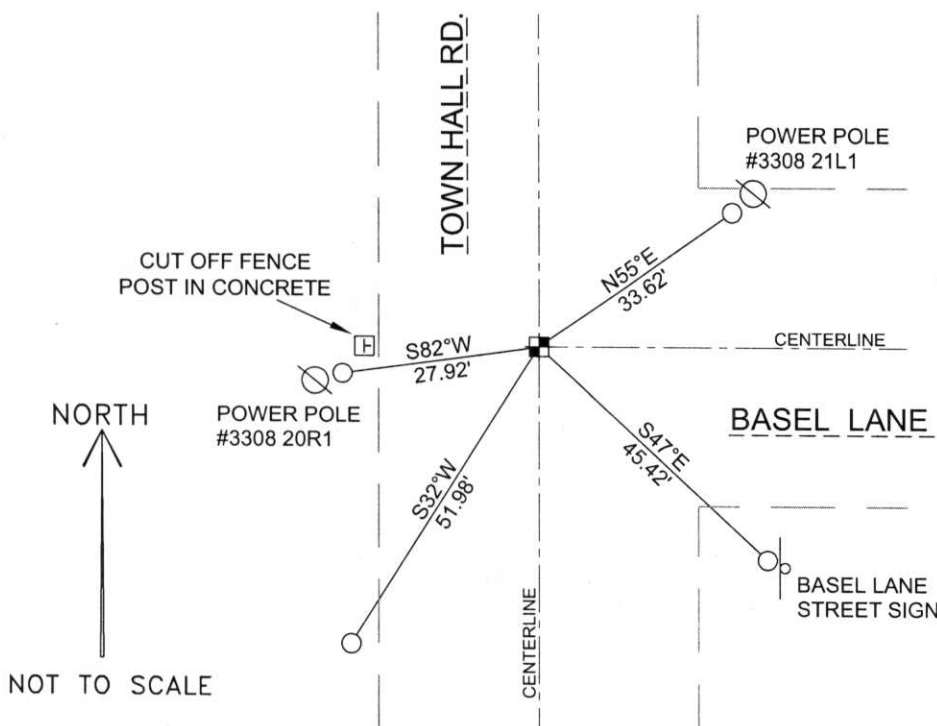
SEARCHED FOR CORNER WITH THE COUNTY'S GRADALL. FOUND NO EVIDENCE OF THE STONE.

SET THE BERNSTEN MONUMENT USING CENTERLINE OF BASEL LANE, THE CENTERLINE OF TOWN HALL ROAD, AND A FENCE POST IN CONCRETE FOUND ON THE WEST SIDE OF TOWN HALL ROAD AS BEST AVAILABLE EVIDENCE.

TIED OUT BERNSTEN TO PERPETUATE CORNER LOCATION.

RECEIVED BY LINCOLN COUNTY
SURVEYOR THIS 11TH DAY
OF January 20 05
Tommy Hall
COUNTY SURVEYOR

(c)(d)(e) Plan view of corner with ties to at least 4 witness monuments. If in disagreement with previously established corner, show the distances between the two corners and also indicate the ties to the disputed corner.



COORDINATES ARE REFERENCED TO THE LINCOLN COUNTY COORDINATE SYSTEM AS DEVELOPED BY THE WISCONSIN DEPARTMENT OF TRANSPORTATION AND WERE DETERMINED BY GPS OBSERVATIONS ON CONTROL POINTS AS SUPPLIED BY LINCOLN COUNTY.

BEARINGS ARE REFERENCED TO MAGNETIC NORTH.

N - 174484.987
E - 439222.507

- - SET 3/4" x 30" REBAR W/ ALUM CAP AT LOCATION SHOWN
- ⊠ - SOUTHWEST CORNER SET BERNSTEN MONUMENT

(i) I, David A. Renaud, RLS S-2142, certify that the corner location on this record was determined by me or under my direction and control and that this U.S. Public Land Survey Monument Record is correct and complete to the best of my knowledge and belief.

David Renaud 12-23-04
Signature S-2142 Date



Index No. 213386

Q-9