

U.S. PUBLIC LAND SURVEY MONUMENT RECORD

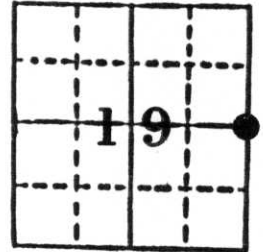
Note: This form is intended and designed to fulfill all requirements of Wisconsin Administrative Code, Chapter A-E 5.02, U.S. Public Land Survey Monument Record (3) (a) (b) (c) (d) (e) (f) (g) (h) (i). An additional sheet may be added if necessary to conform with said requirements.

(a) Corner location: Township 33 North

Range 8 East

Town Russell

County Lincoln

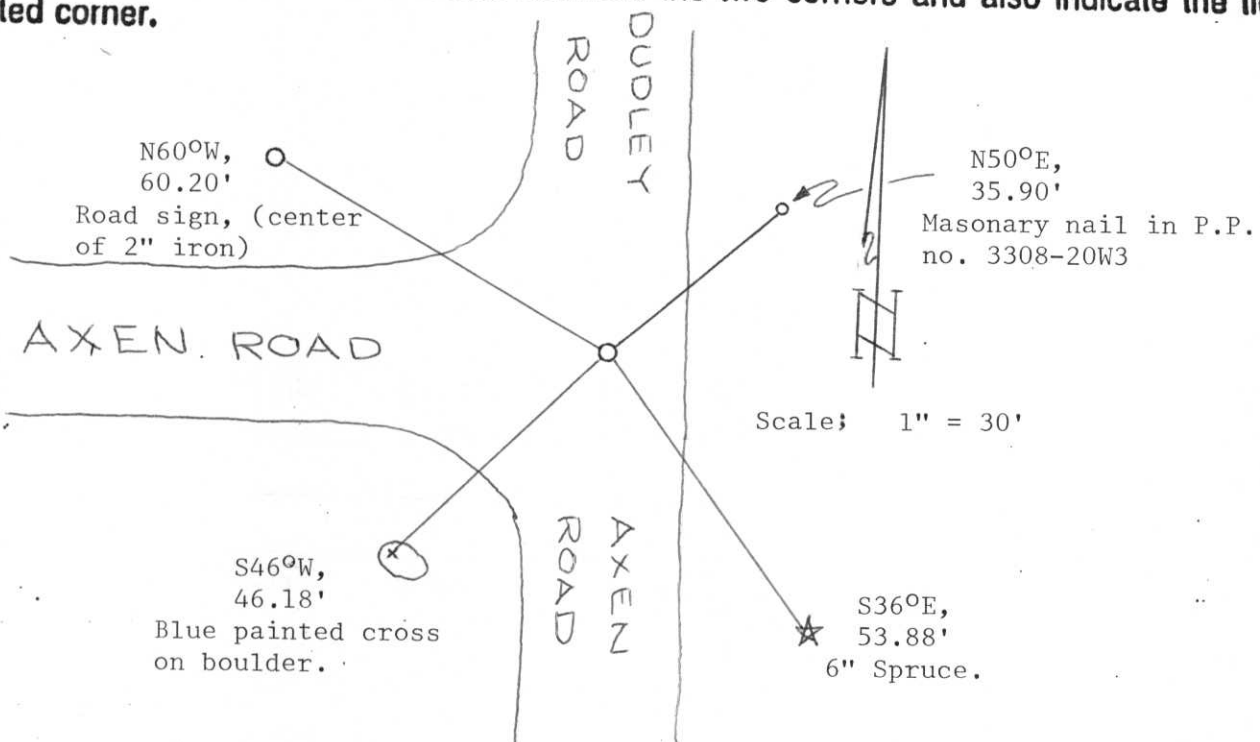


Section 19

b) (f) (g) (h) Description of monument found at this corner and if it was accepted, state all evidence (material, testimonial, occupational, plats, records, other monuments) used as a basis for accepting. If not accepted or if nothing was found, state evidence used as basis for establishing location. If reestablished through lost corner proportionate methods, indicate all monuments, distances and directions used to establish.

On October 26, 1985 we dug in the intersection of the road with a backhoe and found a 6" x 6" granite monument which was broken in half. We reset a Lincoln County Berntsen Monument at the location of the base of the granite. This location fit the centerlines of the granite roadway to the North, South and West. It also fit the location of a fence line to the east relatively well. We set the Berntsen Monument approximately 4" below the surface to avoid future destruction.

c) (d) (e) Plan view of corner with ties to at least 4 witness monuments. If in disagreement with previously established corner, show the distances between the two corners and also indicate the ties to the disputed corner.



(i) I, Sheridan D. Schwark
 (Type or print name) certify that the corner location on this record was determined by me or under my direction and control and that this U.S. Public Land Survey Monument Record is correct and complete to the best of my knowledge and belief.

Sheridan D. Schwark
 Signature

October 29, 1985
 Date

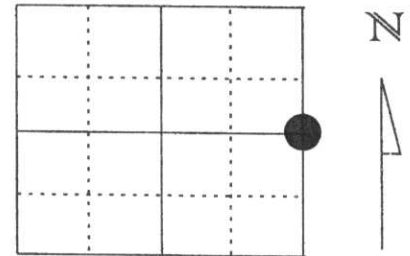


Index No. 0-5

U.S. PUBLIC LAND SURVEY MONUMENT RECORD

Note: This form is intended and designed to fulfill all requirements of Wisconsin Administrative Code, Chapter A-E 5.02, U.S. Public Land Survey Monument Record (3) (a) (b) (c) (d) (e) (f) (g) (h) (l). An additional sheet may be added if necessary to conform with said requirements.

(a) Corner location: Township 33 North
 Range 8 East
 Town/City/Village TN. RUSSELL
 County Lincoln



Section 19

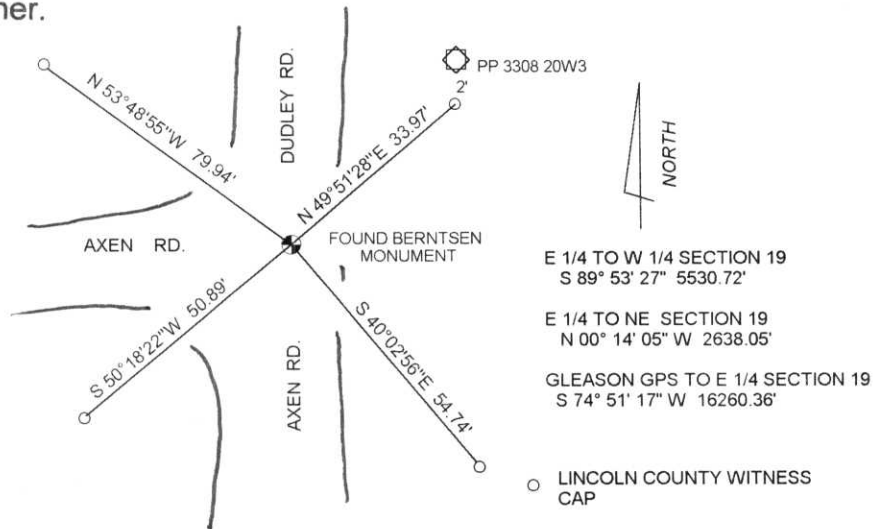
(b) (f) (g) (h) Description of monument found at this corner and if it was accepted, state all evidence (material, testimonial, occupational, plats, records, other monuments) used as a basis for accepting. If not accepted or if nothing was found, state evidence used as basis for establishing location. If reestablished through lost corner proportionate methods, indicate all monuments, distances and directions used to establish.

OCTOBER 1985 SHERIDAN SCHWARK RECOVERED A RED GRANITE STONE AND RESET A BERNTSEN MONUMENT IN THE STONES' POSITION.

APRIL 1998 I FOUND THE MONUMENT SET BY SHERIDAN AND TWO OF THE FOUR TIES HE ESTABLISHED. I SET FOUR NEW LINCOLN COUNTY WITNESS CAPS TO THE CORNER POSITION.

**RECEIVED AT LINCOLN COUNTY
 COURTHOUSE THIS 2nd DAY
 OF July 19 98
Pat Priske
 TAX DESCRIPTION OFFICE**

(c) (d) (e) Plan view of corner with ties to at least 4 witness monuments. If in disagreement with previously established corner, show the distances between the two corners and also indicate the ties to the disputed corner.



(l) I, DAVID L. LEMKE S-1845
 (type or print name) certify that the corner location on this record was determined by me or under my direction and control and that this U.S. Public Land Survey Monument Record is correct and complete to the best of my knowledge and belief.

David L. Lemke
 Signature Date JUL. 02 1998

Index No. 0-5