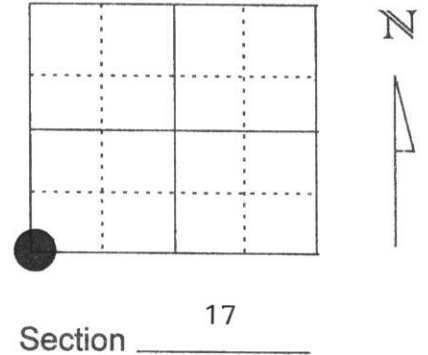


U.S. PUBLIC LAND SURVEY MONUMENT RECORD

Note: This form is intended and designed to fulfill all requirements of Wisconsin Administrative Code, Chapter A-E 5.02, U.S. Public Land Survey Monument Record (3) (a) (b) (c) (d) (e) (f) (g) (h) (i). An additional sheet may be added if necessary to conform with said requirements.

(a) Corner location: Township 33 North
 Range 8 East
 Town/City/Village TN. RUSSELL
 County Lincoln



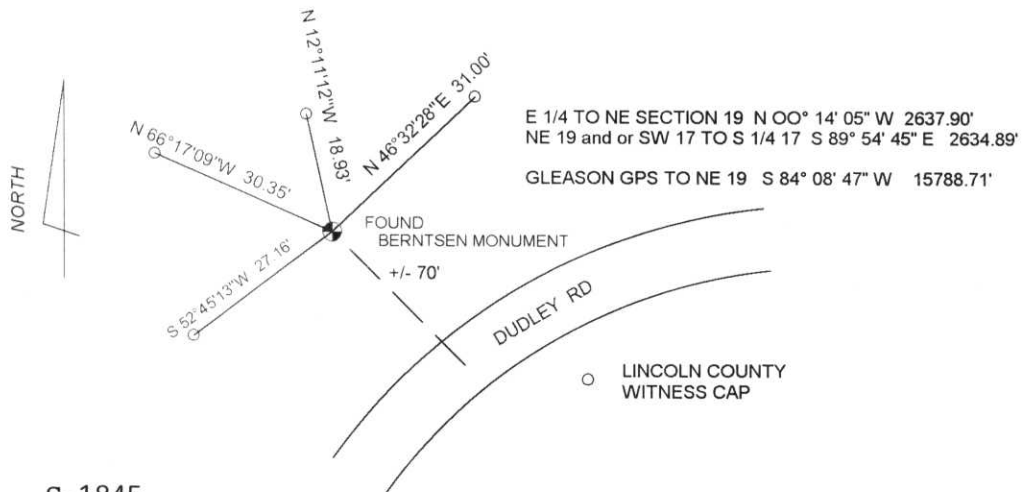
(b) (f) (g) (h) Description of monument found at this corner and if it was accepted, state all evidence (material, testimonial, occupational, plats, records, other monuments) used as a basis for accepting. If not accepted or if nothing was found, state evidence used as basis for establishing location. If reestablished through lost corner proportionate methods, indicate all monuments, distances and directions used to establish.

JUNE 1985 SHERIDAN SCHWARK RECOVERED A RED GRANITE STONE. RESET CORNER WITH A BERNTSEN MONUMENT AND ESTABLISHED 4 WITNESS POINTS TO THE CORNER POSITION.

APRIL 1998 I FOUND THE BERNTSEN MONUMENT AND FOUND THE WITNESS POINTS SET BY SHERIDAN. I RESET 4 NEW LINCOLN COUNTY WITNESS CAPS TO THE CORNER POSITION.

RECEIVED AT LINCOLN COUNTY
 COURTHOUSE THIS 2nd DAY
 OF July 1998
Pat Priebe
 TAX DESCRIPTION OFFICE

(c) (d) (e) Plan view of corner with ties to at least 4 witness monuments. If in disagreement with previously established corner, show the distances between the two corners and also indicate the ties to the disputed corner.



(i) I, DAVID L. LEMKE S-1845
 (type or print name) certify that the corner location on this record was determined by me or under my direction and control and that this U.S. Public Land Survey Monument Record is correct and complete to the best of my knowledge and belief.
David L. Lemke
 Signature Date JUL 02 1998

Index No. M-5

CERTIFIED LAND CORNER RESTORATION

Index No. M-5

State of Wisconsin }
 County of Lincoln } ss.

I Sheridan D. Schwark, do hereby certify that on the 19th day of June, 1985, I found evidence of the Northeast corner of Section 19, Township 33, North, Range 8 East, Fourth, Principal Meridian, as described hereon; and that from this evidence I established a new monument and accessories as described hereon to perpetuate the original location of this corner.

Resident witnesses:

James Rahlf

Emil Lange

History of original corner establishment:

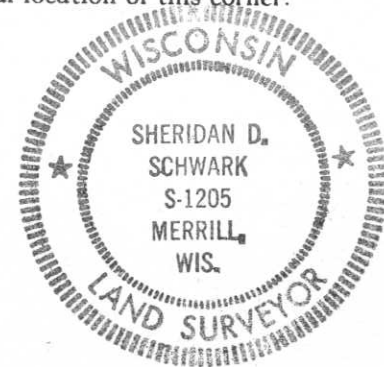
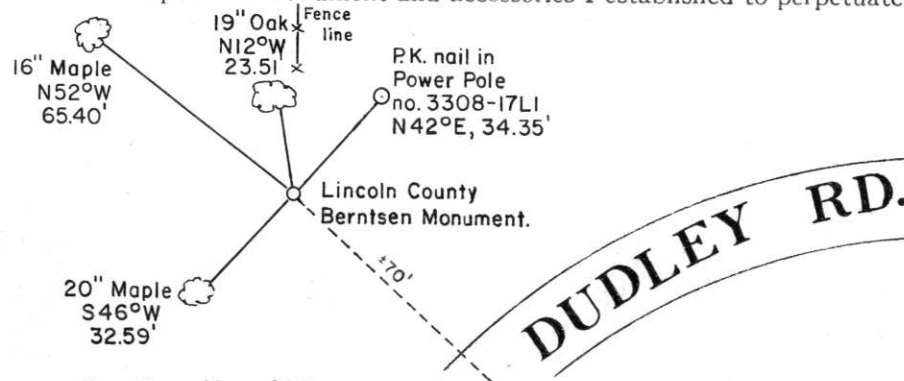
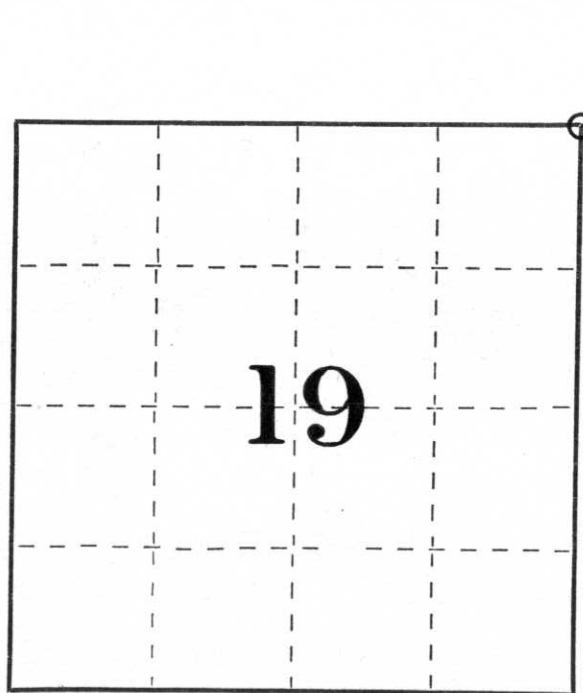
Original wood post set by Government Surveyor.

Red granite set during W.P.A. or C.C.C. days, exact dates and procedures uncertain.

Description of corner evidence found:

With the use of a backhoe, Arnold Wyland Jr. operator, we excavated an area until we found a 6" x 6" x 36" red granite monument. The monument was laying on its side and under several inches of ground. We established the Lincoln County Berntsen Monument at the location of the base of the granite monument. The monument fits a fenceline from the North and the centerline of Dudley Road from the East very well.

Description of monument and accessories I established to perpetuate the original location of this corner.



Dated at Merrill, Wis., this 19th day of June, 1985

Signature Sheridan D. Schwark Title Registered Land Surveyor Registration No. S-1205
 (County Surveyor, Registered Land Surveyor, or other duly authorized official)

Office of Register of Deeds, County of _____, I hereby certify that the within instrument was filed in this office for record on the _____ day of _____, 19____ at _____ o'clock _____ M.

 (Register of Deeds)

By _____ Deputy

○ = Corner monument restored.