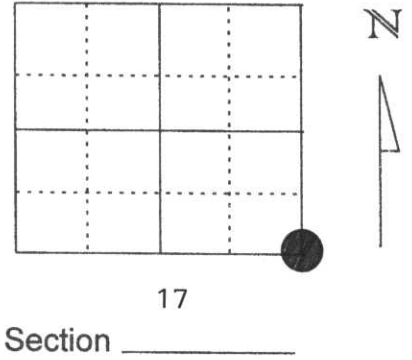


U.S. PUBLIC LAND SURVEY MONUMENT RECORD

Note: This form is intended and designed to fulfill all requirements of Wisconsin Administrative Code, Chapter A-E 5.02, U.S. Public Land Survey Monument Record (3) (a) (b) (c) (d) (e) (f) (g) (h) (l). An additional sheet may be added if necessary to conform with said requirements.

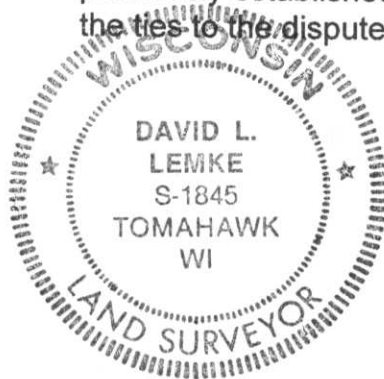
(a) Corner location: Township 33 North
 Range 8 East
 Town/City/Village TN. RUSSELL
 County Lincoln



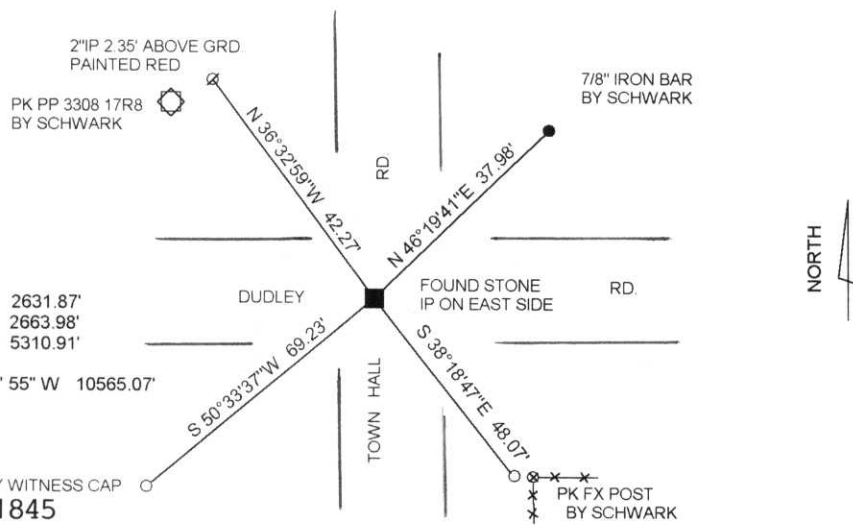
(b) (f) (g) (h) Description of monument found at this corner and if it was accepted, state all evidence (material, testimonial, occupational, plats, records, other monuments) used as a basis for accepting. If not accepted or if nothing was found, state evidence used as basis for establishing location. If reestablished through lost corner proportionate methods, indicate all monuments, distances and directions used to establish.

- NOVEMBER 1980 SHERIDAN SCHWARK RECOVERED A GRANITE STONE +/- 3" BELOW THE ROAD SURFACE AND ESTABLISHED THREE WITNESS TIES TO THE CORNER POSITION.
- JUNE 1996 I FOUND THE STONE AND ALL OF SHERIDAN'S WITNESS POINT. AT THAT TIME I ESTABLISHED TWO ADDITIONAL WITNESS TIES - LINCOLN COUNTY WITNESS CAPS TO THE CORNER POSITION.
- JUNE 1998 I FOUND THE STONE AND ALL WITNESS POINTS. I TIED THE CORNER TO SURROUNDING SECTION CORNERS AND THE GLEASON GPS STATION.

(c) (d) (e) Plan view of corner with ties to at least 4 witness monuments. If in disagreement with previously established corner, show the distances between the two corners and also indicate the ties to the disputed corner.



SE 17 TO S 1/4 17 N 89° 49' 06" W 2631.87'
 SE 17 TO E 1/4 17 N 00° 01' 33" E 2663.98'
 SE 17 TO SE 16 S 88° 08' 07" E 5310.91'
 GLEASON GPS TO SE 17 S 81° 09' 55" W 10565.07'



(l) I, DAVID L. LEMKE S-1845
 (type or print name) certify that the corner location on this record was determined by me or under my direction and control and that this U.S. Public Land Survey Monument Record is correct and complete to the best of my knowledge and belief.

David L. Lemke
 Signature

JUL. 02 1998
 Date

RECEIVED AT LINCOLN COUNTY COURTHOUSE THIS 2nd DAY OF July 19 98
Pat Priebe
 TAX DESCRIPTION OFFICE

(revised 2/97)

Index No. M-9

U.S. PUBLIC LAND SURVEY MONUMENT RECORD

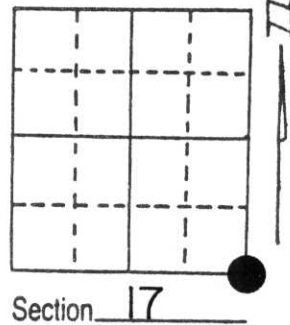
Note: This form is intended and designed to fulfill all requirements of Wisconsin Administrative Code, Chapter A-E 5.02, U.S. Public Land Survey Monument Record (3) (a) (b) (c) (d) (e) (f) (g) (h) (i). An additional sheet may be added if necessary to conform with said requirements.

(a) Corner location: Township 33 North

Range 8 East

Town/City/Village TN RUSSELL

County LINCOLN



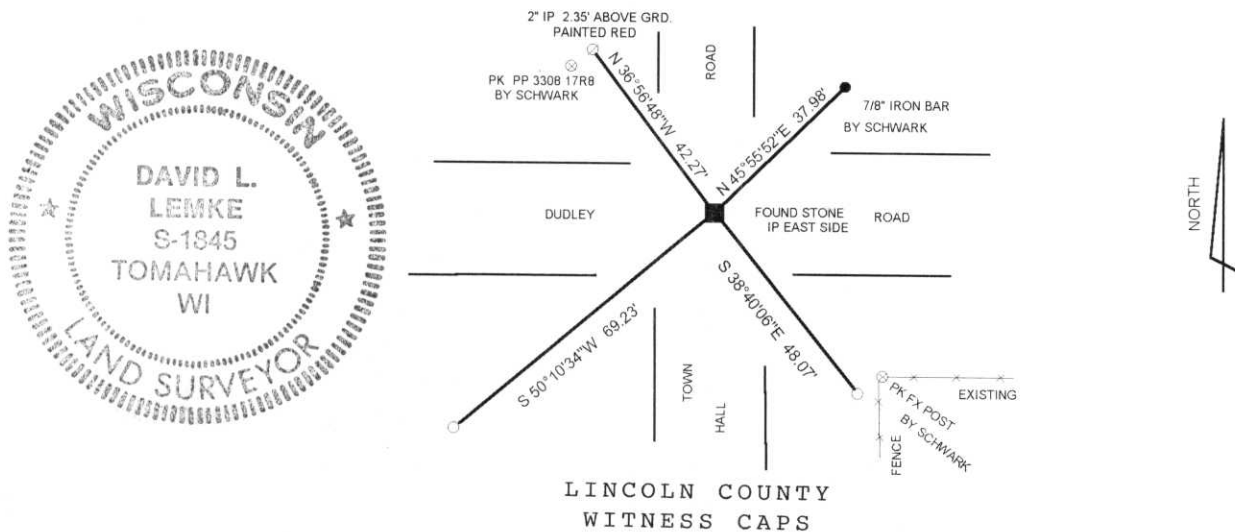
(b) (f) (g) (h) Description of monument found at this corner and if it was accepted, state all evidence (material, testimonial, occupational, plats, records, other monuments) used as a basis for accepting. If not accepted or if nothing was found, state evidence used as basis for establishing location. If reestablished through lost corner proportionate methods, indicate all monuments, distances and directions used to establish.

NOVEMBER 1980 SHERIDAN SCHWARK RECOVERED A STONE ±3" BELOW THE ROAD SURFACE AND SET 3 WITNESS REFERENCES.

I FOUND THE SAME STONE ±3" BELOW THE ROAD SURFACE AND ALL OF SHERIDAN'S WITNESS TIES.

**RECEIVED AT LINCOLN COUNTY
COURTHOUSE THIS 28th DAY
OF June 19 96
Pat Prebe
TAX DESCRIPTION OFFICE**

(c) (d) (e) Plan view of corner with ties to at least 4 witness monuments. If in disagreement with previously established corner, show the distances between the two corners and also indicate the ties to the disputed corner.



(i) I, DAVID L. LEMKE
(type or print name) certify that the corner location on this record was determined by me or under my direction and control and that this U.S. Public Land Survey Monument Record is correct and complete to the best of my knowledge and belief.

David Lemke 6.6.95
Signature Date

Index No. M-9

CERTIFIED LAND CORNER RESTORATION

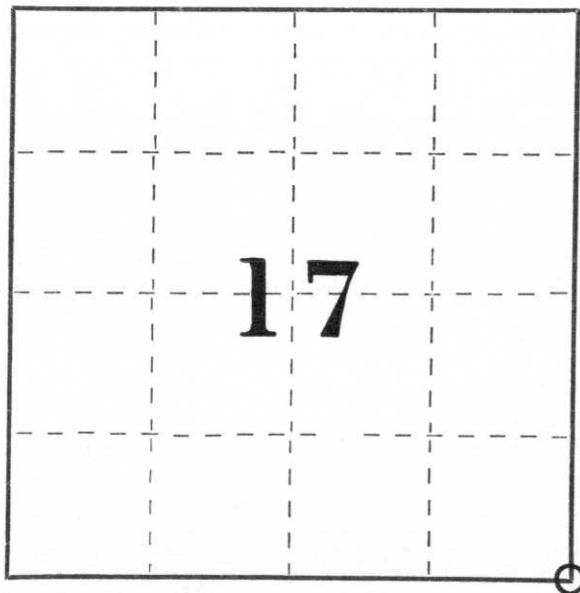
Index No. m-9

State of Wisconsin }
 County of Lincoln } ss.

I Sheridan D. Schwark, do hereby certify that on the 30th day of October, 1980, I found evidence of the Southeast corner of Section 17 Township 33, North, Range 8 East, Fourth, Principal Meridian, as described hereon; and that from this evidence I established a new monument and accessories as described hereon to perpetuate the original location of this corner.

Resident witnesses:

Mr. Harold Van Ert



○ = Corner monument restored.

History of original corner establishment:

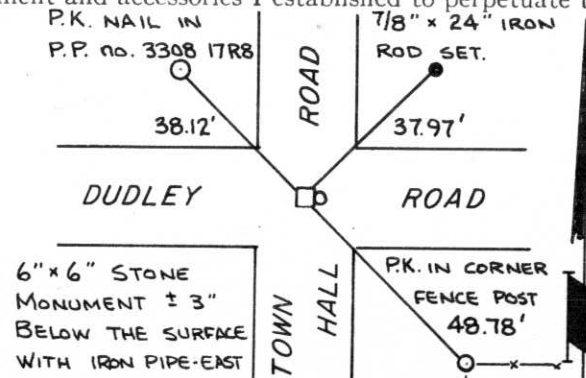
Wood post by original government surveyor

Description of corner evidence found:

Mr. Harold Van Ert showed us the location of the stone in the road, we then dug for it by hand and found the stone 3" below the surface in good condition. We established the references shown below.



Description of monument and accessories I established to perpetuate the original location of this corner.



Dated at Merrill, Wis., this 4th day of November, 1980

Signature Sheridan D. Schwark Title Registered Land Surveyor Registration No. S-1205
 (County Surveyor, Registered Land Surveyor, or other duly authorized official)

Office of Register of Deeds, County of _____, I hereby certify that the within instrument was filed in this office for record on the _____ day of _____, 19____ at _____ o'clock _____ M.

(Register of Deeds)

By _____ Deputy