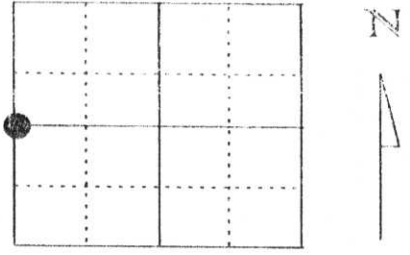


U.S. PUBLIC LAND SURVEY MONUMENT RECORD

Note: This form is intended and designed to fulfill all requirements of Wisconsin Administrative Code, Chapter A-E 5.02, U.S. Public Land Survey Monument Record (3) (a) (b) (c) (d) (e) (f) (g) (h) (i). An additional sheet may be added if necessary to conform with said requirements.

(a) Corner location: Township 33 North
 Range 8 East
 Town/City/Village RUSSELL
 County Lincoln



Section 14

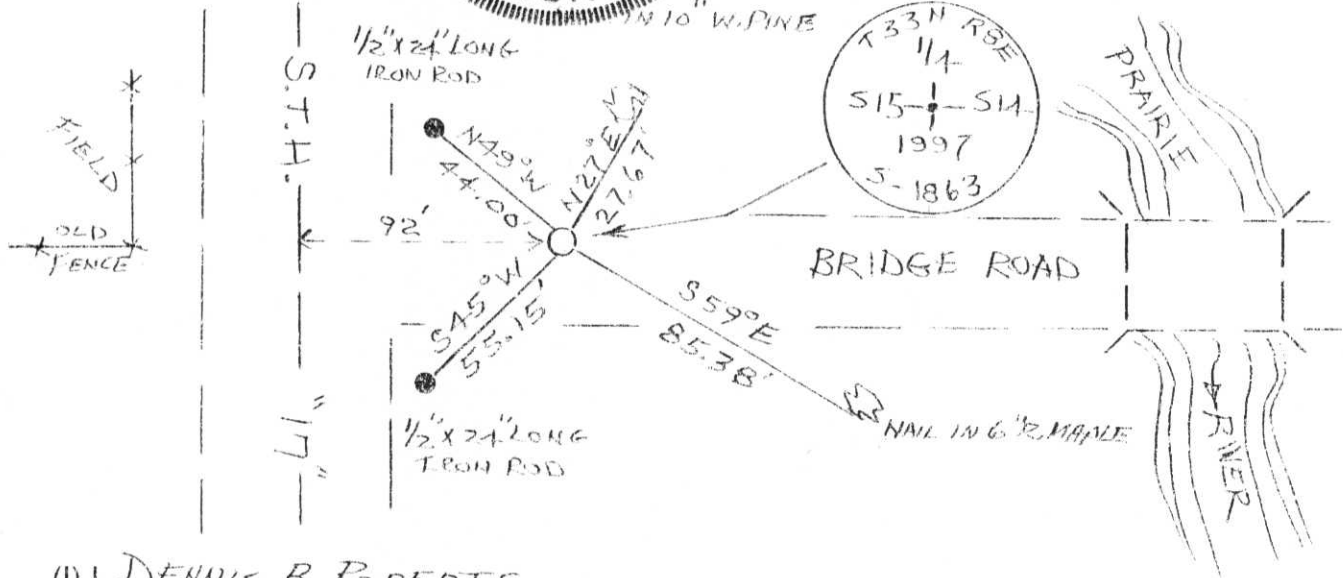
(b) (f) (g) (h) Description of monument found at this corner and if it was accepted, state all evidence (material, testimonial, occupational, plats, records, other monuments) used as a basis for accepting. If not accepted or if nothing was found, state evidence used as basis for establishing location. If reestablished through lost corner proportionate methods, indicate all monuments, distances and directions used to establish.

- 1854 JACKSON L. PRENTICE ESTABLISHED QUARTER SECTION POST, HEMLOCK 8 WEST 17 LINKS, CEDAR S 76° E 15 LINKS.
 - 1997 I FIND NO EVIDENCE OF CORNER USING LOCATION AS SHOWN ON D.O.T. PROJECT T0189 (2) 1958.
 I ESTABLISHED CORNER USING EXTENSION OF OLD FENCE FROM WEST AND 92 FEET EAST OF CENTERLINE OF STATE HIGHWAY "17" AS SHOWN ON D.O.T. PROJECT T0189 (2).



RECEIVED AT LINCOLN COUNTY
 COURTHOUSE THIS 14TH DAY
 OF June 20 00
Tony Wallman
 LAND INFORMATION OFFICE

(c) (d) (e) Plan view of corner with ties to at least 4 witness monuments. If in disagreement with previously established corner, show the distances between the two corners and also indicate the ties to the disputed corner.



(I) I, DENNIS B. ROBERTS
 (type or print name) certify that the corner location on this record was determined by me or under my direction and control and that this U.S. Public Land Survey Monument Record is correct and complete to the best of my knowledge and belief.
Dennis B. Roberts June 6, 1997
 Signature Date

Index No. K-17