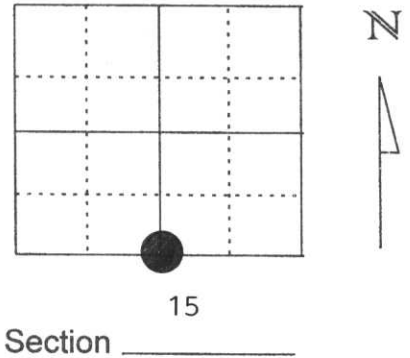


U.S. PUBLIC LAND SURVEY MONUMENT RECORD

Note: This form is intended and designed to fulfill all requirements of Wisconsin Administrative Code, Chapter A-E 5.02, U.S. Public Land Survey Monument Record (3) (a) (b) (c) (d) (e) (f) (g) (h) (l). An additional sheet may be added if necessary to conform with said requirements.

(a) Corner location: Township 33 North
 Range 8 East
 Town/City/Village TN. RUSSELL
 County Lincoln

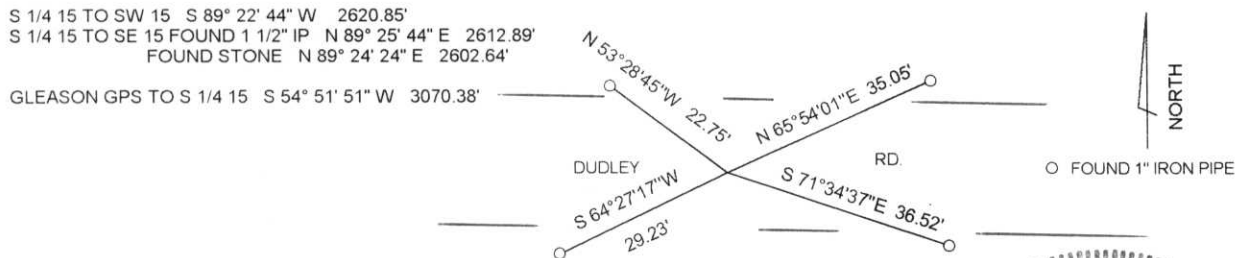


(b) (f) (g) (h) Description of monument found at this corner and if it was accepted, state all evidence (material, testimonial, occupational, plats, records, other monuments) used as a basis for accepting. If not accepted or if nothing was found, state evidence used as basis for establishing location. If reestablished through lost corner proportionate methods, indicate all monuments, distances and directions used to establish.

DECEMBER 1994 DANIEL HIGGINBOTHAM RECOVERED A STONE FOR THE CORNER POSITION & RESET A BERNTSEN MONUMENT IN ITS PLACE. ALSO ESTABLISHED 4 WITNESS PIPES.

JUNE 1998 I FOUND THE WITNESS PIPES SET BY HIGGINBOTHAM. I DID NOT DIG THE CORNER AS THE DISTANCE TIE TO THE IP FOR THE SE CORNER OF SECTION 15 CHECKED. I TIED THE CORNER TO THE SE & SW CORNER OF SECTION 15 AND TO THE GLEASON GPS STATION. CORNER FALLS IN A FILL AREA WITH A WET SWAMP ON BOTH SIDES. THE WITNESS PIPES ARE ON THE EDGE OF THE TRAVELED PORTION OF DUDLEY ROAD.

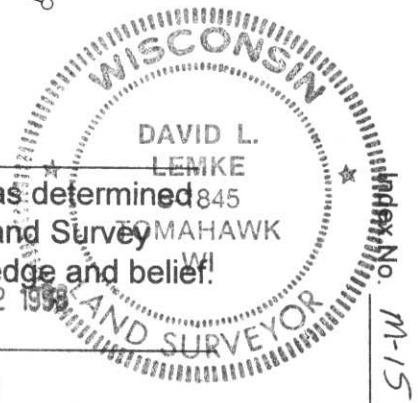
(c) (d) (e) Plan view of corner with ties to at least 4 witness monuments. If in disagreement with previously established corner, show the distances between the two corners and also indicate the ties to the disputed corner.



(l) I, DAVID L. LEMKE S-1845
 (type or print name) certify that the corner location on this record was determined by me or under my direction and control and that this U.S. Public Land Survey Monument Record is correct and complete to the best of my knowledge and belief.

David L. Lemke
 Signature

JUL. 02 1998
 Date



RECEIVED AT LINCOLN COUNTY
 COURTHOUSE THIS 2nd DAY
 OF July 19 98
Pat Priske
 TAX DESCRIPTION OFFICE

