

U.S. PUBLIC LAND SURVEY MONUMENT RECORD

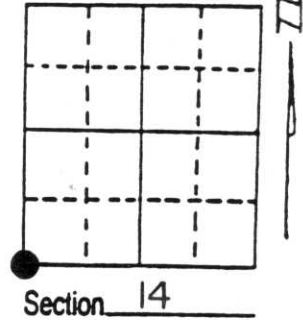
Note: This form is intended and designed to fulfill all requirements of Wisconsin Administrative Code, Chapter A-E 7.08 U.S. Public Land Survey Monument Record (3) (a) (b) (c) (d) (e) (f) (g) (h) (i). An additional sheet may be added if necessary to conform with said requirements.

(a) Corner location: Township 33 North

Range 8 East ~~West~~

Town/~~City/Village~~ RUSSELL

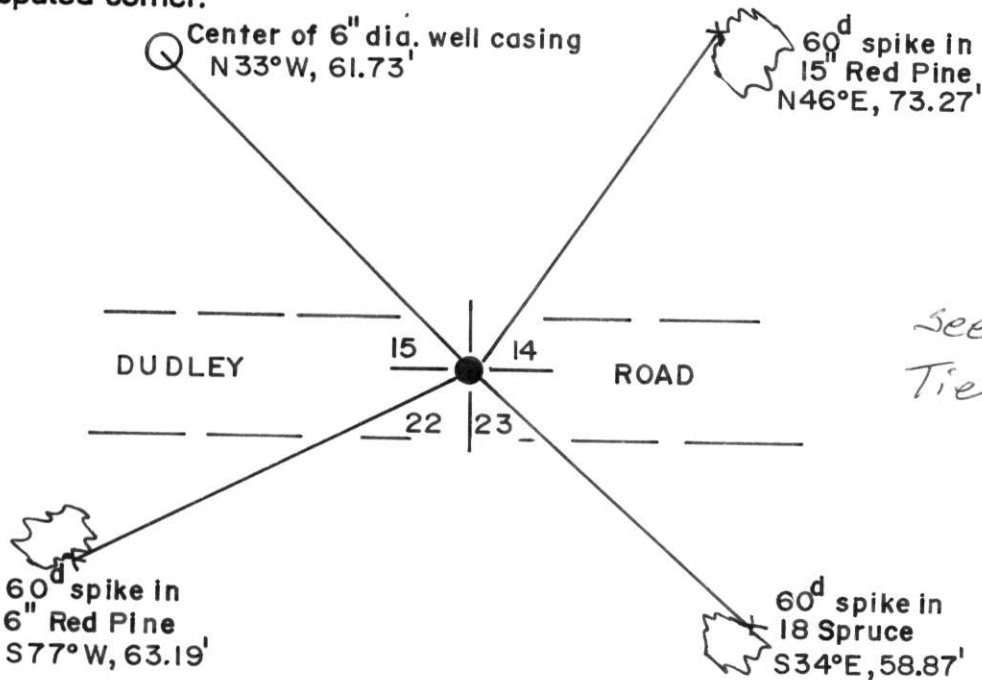
County LINCOLN



(b) (f) (g) (h) Description of monument found at this corner and if it was accepted, state all evidence (material, testimonial, occupational, plats, records, other monuments) used as a basis for accepting. If not accepted or if nothing was found, state evidence used as basis for establishing location. If reestablished through lost corner proportionate methods, indicate all monuments, distances and directions used to establish. Indicate type of monument found or set and sign post.

- 1854 Jackson Prentice established original Section Corner post Maple 10 N40W 10 lks, Maple 12 N79E 22 lks, Linden 18 S43E 20 lks, Linden 18 S56E 30 lks.
- 1963 Robert L. Ilg found iron pipe in centerline of Dudley Road, \pm 153 feet west of centerline of S.T.H. "17", per highway construction plans.
- 1994 I found 1 1/2" dia. iron pipe in centerline of Dudley Road 1 foot below flush and witnessed as shown.

(c) (d) (e) Plan view of corner with ties to at least 4 witness monuments. If in disagreement with previously established corner, show the distances between the two corners and also indicate the ties to the disputed corner.



- Magnetic Bearings Taken With Handheld Compass
- No Scale

see Lemke Tie sheet

(i) I, Dennis B. Roberts

(type or print name) certify that the corner location on this record was determined by me or under my direction and control and that this U.S. Public Land Survey Monument Record is correct and complete to the best of my knowledge and belief.

Dennis B. Roberts
Signature

9-23-94
Date



Stamp

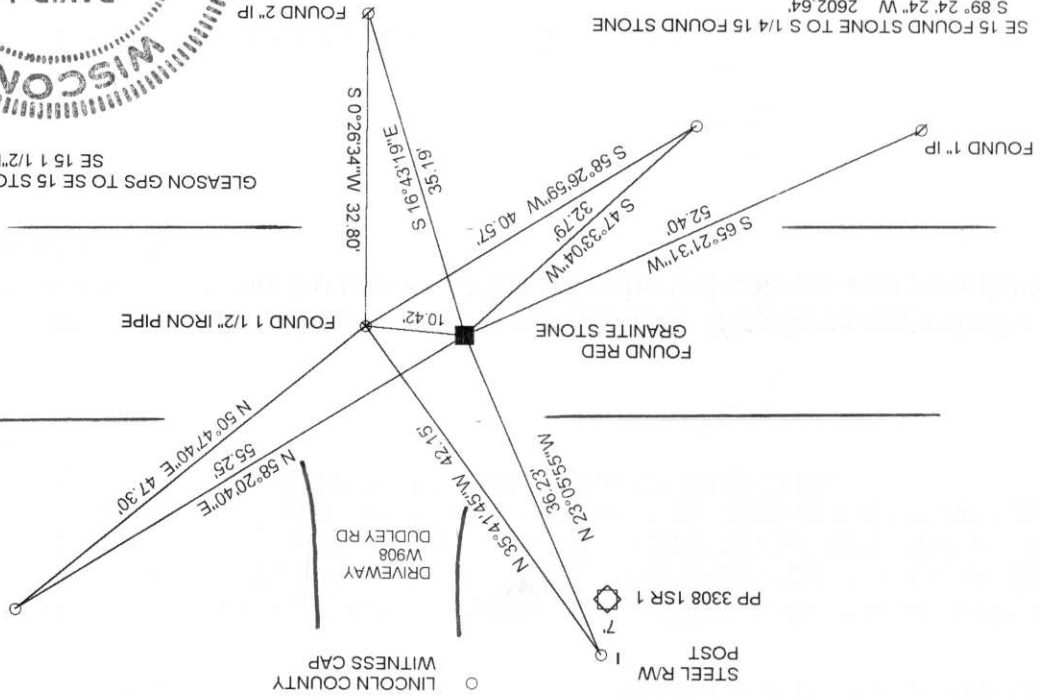
Index No. M-17



RECEIVED AT LINCOLN COUNTY COURTHOUSE THIS

SE 15 FOUND STONE TO S 1/4 15 FOUND STONE
 S 89° 24' 24" W 2602.64'
 SE 15 FOUND 1 1/2" IP TO S 1/4 15 FOUND STONE
 S 89° 25' 44" W 2612.89'

GLEASON GPS TO SE 15 STONE: S 3° 00' 45" E 1742.50'
 SE 15 1 1/2" IP: S 3° 21' 05" E 1743.98'

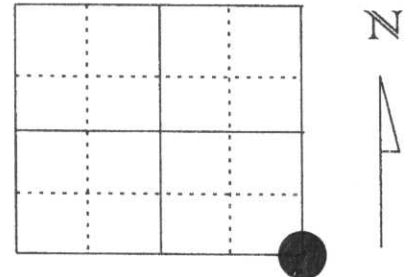


STEEL RM POST
 PP 3308 1SR 1
 LINCOLN COUNTY WITNESS CAP
 DUDLEY RD W/908 DRIVEWAY

U.S. PUBLIC LAND SURVEY MONUMENT RECORD

Note: This form is intended and designed to fulfill all requirements of Wisconsin Administrative Code, Chapter A-E 5.02, U.S. Public Land Survey Monument Record (3) (a) (b) (c) (d) (e) (f) (g) (h) (l). An additional sheet may be added if necessary to conform with said requirements.

(a) Corner location: Township 33 North
 Range 8 East
 Town/City/Village TN. RUSSELL
 County Lincoln



Section 15

(b) (f) (g) (h) Description of monument found at this corner and if it was accepted, state all evidence (material, testimonial, occupational, plats, records, other monuments) used as a basis for accepting. If not accepted or if nothing was found, state evidence used as basis for establishing location. If reestablished through lost corner proportionate methods, indicate all monuments, distances and directions used to establish.

- 1854 JACKSON PRENTICE ESTABLISHED ORIGINAL CORNER POST
- 1963 ROBERT ILG FOUND AN IRON PIPE +/- 153' WEST OF C/L HWY. 17 - PER R/W PLAT
- 1971 LOUIS LEMBKE FOUND AN IRON PIPE FOR CORNER POSITION - CSM # 55 & 60
- 1994 DENNIS ROBERTS FOUND AN IRON PIPE FOR CORNER POSITION - TIE SHEET DATED: 9/23/94
 DANIEL HIGGINBOTHAM FOUND AN IRON PIPE FOR CORNER POSITION - CSM #774 & TIE SHEET DATED: 12/4/94
- 1998 IN LOOKING FOR THE CORNER THE LINCOLN CTY. HWY. DEPT. FOUND A RED GRANITE STONE WITH A SICKLE BLADE NEXT TO IT. I REDUG THE STONE USING THEIR TIE AND FOUND IT TO BE SOLID IN IT'S POSITION 1.5' N OF THE C/L OF DUDLEY RD AND 10.42' WESTERLY OF A 1 1/2" IRON PIPE. THE STONE LOOKS TO HAVE BEEN HIT - POSSIBLY BY PLOW BLADES OVER THE YEARS - I LOCATED IT'S POSITION AS SHOWN ON THE REVERSE SIDE OF THIS SHEET

(c) (d) (e) Plan view of corner with ties to at least 4 witness monuments. If in disagreement with previously established corner, show the distances between the two corners and also indicate the ties to the disputed corner.



SEE MAP ON REVERSE SIDE OF SHEET

RECEIVED AT LINCOLN COUNTY
 COURTHOUSE THIS 2nd DAY
 OF July 19 98
Pat Priebe
 TAX DESCRIPTION OFFICE

(l) I, DAVID L. LEMKE S-1845
 (type or print name) certify that the corner location on this record was determined by me or under my direction and control and that this U.S. Public Land Survey Monument Record is correct and complete to the best of my knowledge and belief.

JUL 02 1998
 Date

David L. Lemke
 Signature

Index No. M-17