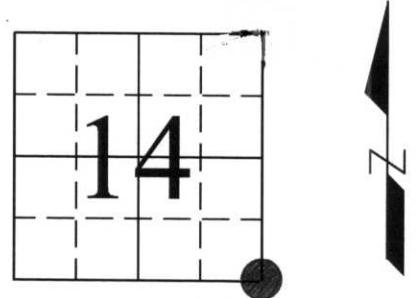


U.S. PUBLIC LAND SURVEY MONUMENT RECORD

Note: This form is intended and designed to fulfill all requirements of Wisconsin Administrative Code, Chapter A-E 7.08, U.S. Public Land Survey Monument Record (3) (a) (b) (c) (d) (e) (f) (g) (h) (i). An additional sheet may be added if necessary to conform with said requirements.

(a) Corner location: Township 33 North
 Range 8 East
 Town/City/Village Russell
 County Lincoln



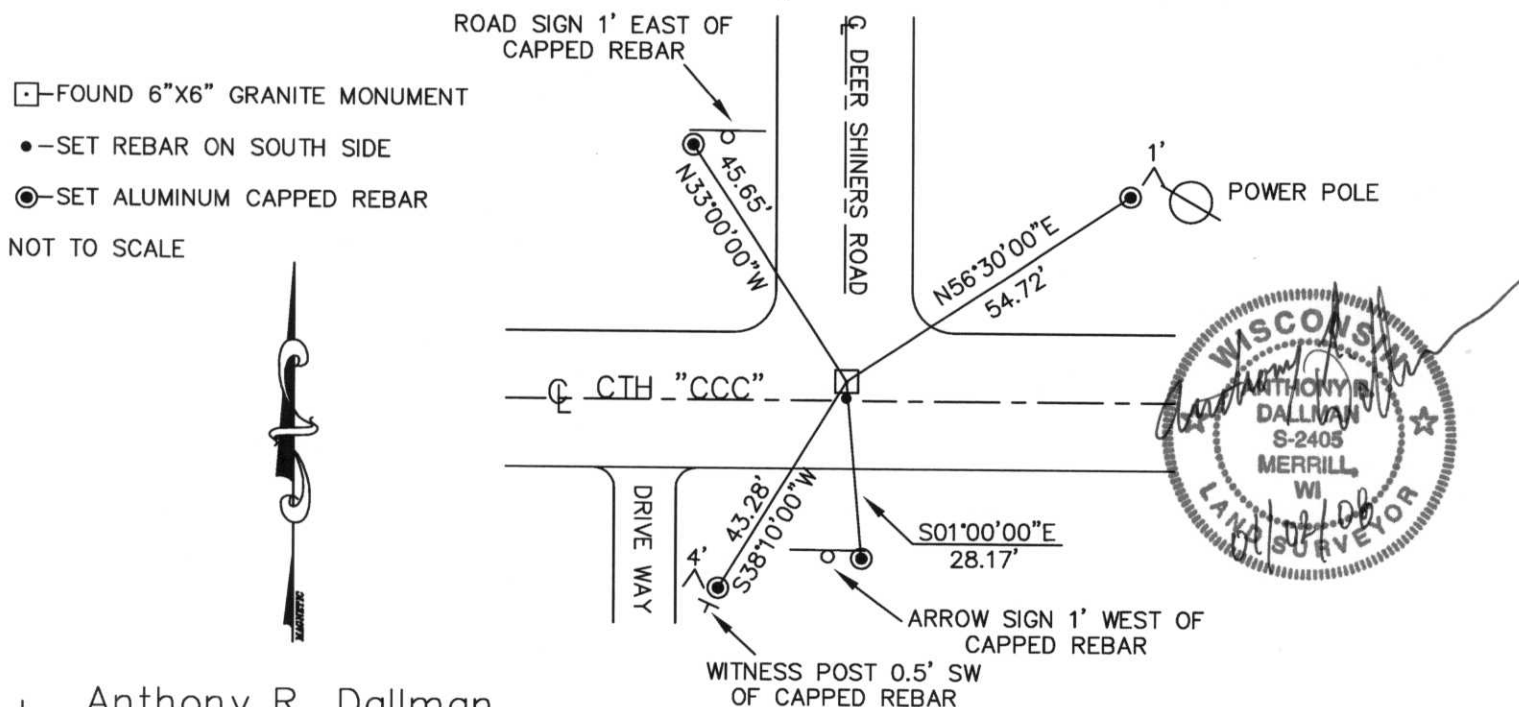
(b) (f) (g) (h) Description of monument found at this corner and if it was accepted, state all evidence (material, testimonial, occupational, plats, records, other monuments) used as a basis for accepting. If not accepted or if nothing was found, state evidence used as basis for establishing location. If reestablished through lost corner proportionate methods, indicate all monuments, distances and directions used to establish.

1854 - JACKSON L. PRENTICE ESTABLISHED SECTION CORNER POST, WITNESSED BY: BIRCH 20 N58°E 9 LINKS
 MAPLE 10 S24°E 25 LINKS
 MAPLE 12 S48°W 31 LINKS
 MAPLE 8 N25°W 7 LINKS

UNKNOWN DATE - UNKNOWN SURVEYOR SET 6"X6" GRANITE MONUMENT.

2000 - FOUND 6"X6" GRANITE MONUMENT 1' NORTH OF CENTER LINE CTH "CCC", DOWN 20" FROM ROAD SURFACE, SET IRON ROD ON SOUTH SIDE. WITNESSED AS SHOWN BELOW.

(c) (d) (e) Plan view of corner with ties to at least 4 witness monuments. If in disagreement with previously established corner, show the distance between the two corners and also indicate the ties to the disputed corner.



(i) I, Anthony R. Dallman
 (type or print name) certify that the corner location on this record was determined by me or under my direction and control and that this U.S. Public Land Survey Monument Record is correct and complete to the best of my knowledge and belief.

Anthony R. Dallman
 Signature Date 01/02/08

Index No. M-21