

# U.S. PUBLIC LAND SURVEY MONUMENT RECORD

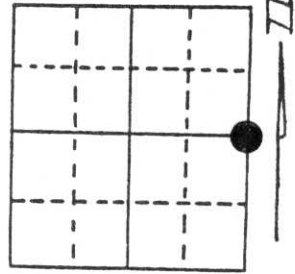
Note: This form is intended and designed to fulfill all requirements of Wisconsin Administrative Code, Chapter A-E 5.02, U.S. Public Land Survey Monument Record (3) (a) (b) (c) (d) (e) (f) (g) (h) (i). An additional sheet may be added if necessary to conform with said requirements.

(a) Corner location: Township 33 North

Range 8 East

Town/City/Village RUSSELL

County LINCOLN



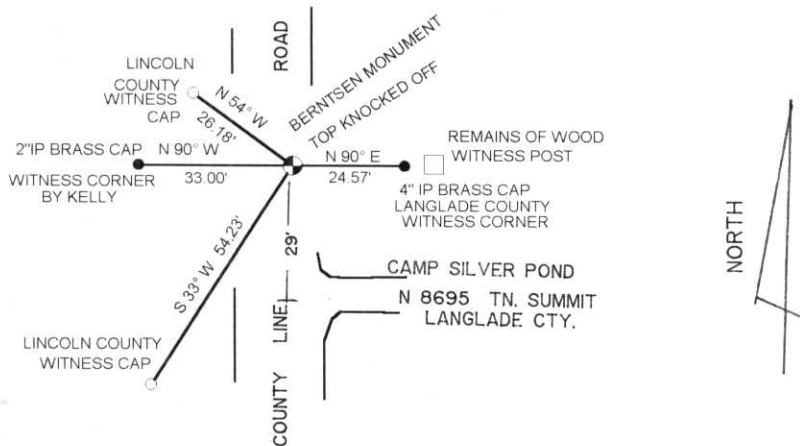
Section 13

(b) (f) (g) (h) Description of monument found at this corner and if it was accepted, state all evidence (material, testimonial, occupational, plats, records, other monuments) used as a basis for accepting. If not accepted or if nothing was found, state evidence used as basis for establishing location. If reestablished through lost corner proportionate methods, indicate all monuments, distances and directions used to establish.

NOVEMBER 1975 BILL KELLY FOUND A SCRIBED WOOD POST AND A 2" IP BRASS CAP WITNESS CORNER SET BY A.W. KORPICK (I SUSPECT BILL KELLY MEANT A.W. KORDICK) KELLY SET A BERNTSEN MONUMENT AND A 1"x12" IP FOR DETECTION. IN ADDITION, SET A 2" IP BRASS CAP WITNESS CORNER 33 FEET WEST OF TRUE CORNER AND RECOVERED AN 8" ASPEN BT.

I FOUND A BERNTSEN MONUMENT ON THE ROAD SURFACE WITH THE TOP KNOCKED OFF. ALSO FOUND BOTH WITNESS CORNER BRASS CAPS AND THE REMAINS OF KORDICK'S WOOD POST AND THE ASPEN BT TO THE SOUTHWEST. THE CORNER IS 13' TO THE EAST OF THE WEST EDGE OF THE ROAD AND APPROX. 29' NORTH OF THE DRIVEWAY TO N 8695 TN. OF SUMMIT LANGLADE CTY.

(c) (d) (e) Plan view of corner with ties to at least 4 witness monuments. If in disagreement with previously established corner, show the distances between the two corners and also indicate the ties to the disputed corner.



RECEIVED AT LINCOLN COUNTY  
 COURTHOUSE THIS 28th DAY  
 OF June 1996  
 OF Pat Lemke  
 TAX DESCRIPTION OFFICE

(i) I, DAVID L. LEMKE  
 (type or print name) certify that the corner location on this record was determined by me or under my direction and control and that this U.S. Public Land Survey Monument Record is correct and complete to the best of my knowledge and belief.

Signature David Lemke S.C. 96

Date



Index No. K-25

CERTIFIED LAND CORNER RESTORATION

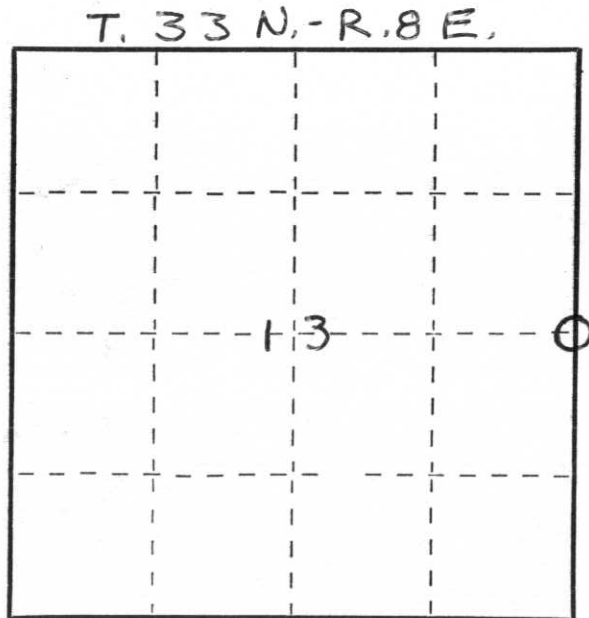
Index No. K-25

State of Wisconsin }  
 County of LINCOLN } ss.

I WILLIAM F KELLY, do hereby certify that on the 25<sup>th</sup> day of NOVEMBER, 1975, I found evidence of the 1/4 SECTION corner of SECTIONS 13 & 18 Township 33, North, Range 8E & 9E, Fourth, Principal Meridian, as described hereon; and that from this evidence I established a new monument and accessories as described hereon to perpetuate the original location of this corner.

Resident witnesses:

A. SCHAUFELBERGER

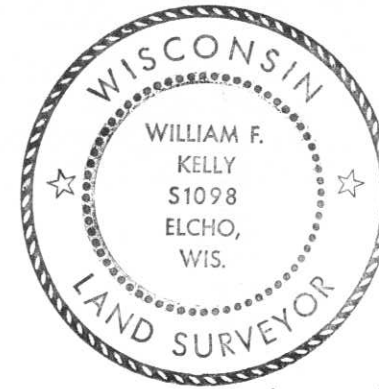


○ = Corner monument restored.

History of original corner establishment:

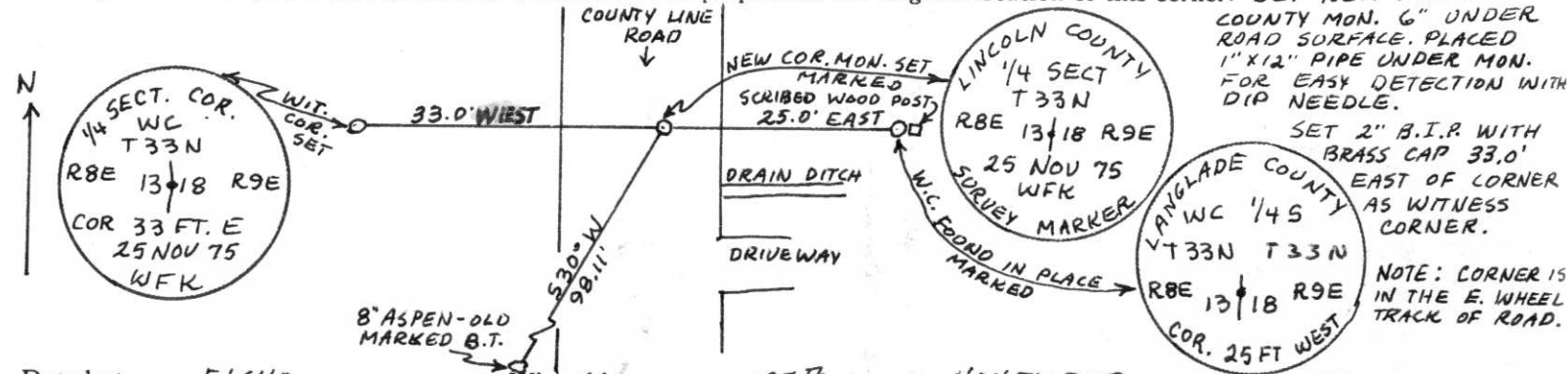
Description of corner evidence found:

LOCATED SCRIBED WOOD POST AND 2" PIPE IN CONCRETE WITH BRASS CAP AS WITNESS CORNER TO 1/4 SECTION CORNER 13 & 18 T. 33N. - R 8E & 9E. RESIDENT WITNESS REPORTED THAT ORIGINAL STONE WAS REMOVED DURING ROAD WORK. WITNESS CORNER SET BY A.W. KOPICK IN OCT. 1964.



*William F. Kelly*

Description of monument and accessories I established to perpetuate the original location of this corner.



Dated at ELCHO, Wis., this 25<sup>th</sup> day of NOVEMBER, 1975.

Signature William F. Kelly Title REGISTERED LAND SURVEYOR Registration No. 51098  
 (County Surveyor, Registered Land Surveyor, or other duly authorized official)

Office of Register of Deeds, County of \_\_\_\_\_, I hereby certify that the within instrument was filed in this office for record on the \_\_\_\_\_ day of \_\_\_\_\_, 19\_\_\_\_ at \_\_\_\_\_ o'clock \_\_\_\_\_ M.

(Register of Deeds)

By \_\_\_\_\_ Deputy