

U S PUBLIC LAND SURVEY MONUMENT RECORD

NOTE: This form is intended and designed to fulfill all requirements of Wisconsin Administrative Code, Chapter A-E 7.08 U.S. Public Land Survey Monument Record (3) (a-i)

A-E 7.08(3)(a) Identity of corner:
SOUTH 1/4 CORNER SECTION 13,
TOWNSHIP 33 NORTH,
RANGE 08 EAST OF THE 4TH PM,
TOWN OF RUSSELL,
COUNTY OF LINCOLN

WISCORS - LINCOLN COUNTY
N: 179,465.011 USft (179,465.016)
E: 457,745.829 USft (457,745.832)
Datum: NAD83 (2011)
GNSS Method RTN - Direct
GNSS Control WISCORS VRS



The coordinate value shown has been verified by the average of two or more GPS observations at a markedly different time. Coordinates shown in parenthesis are provided by Lincoln County.

A-E 7.08(3)(b)

Original Surveyor: Jackson L. Prentice

Date of Original Survey Commenced: October 2, 1854
Completed: October 13, 1854

Original Accessories:
Maple 10 N 50 1/2° W 22 Links
Tamarac 8 S 47° W 20 Links

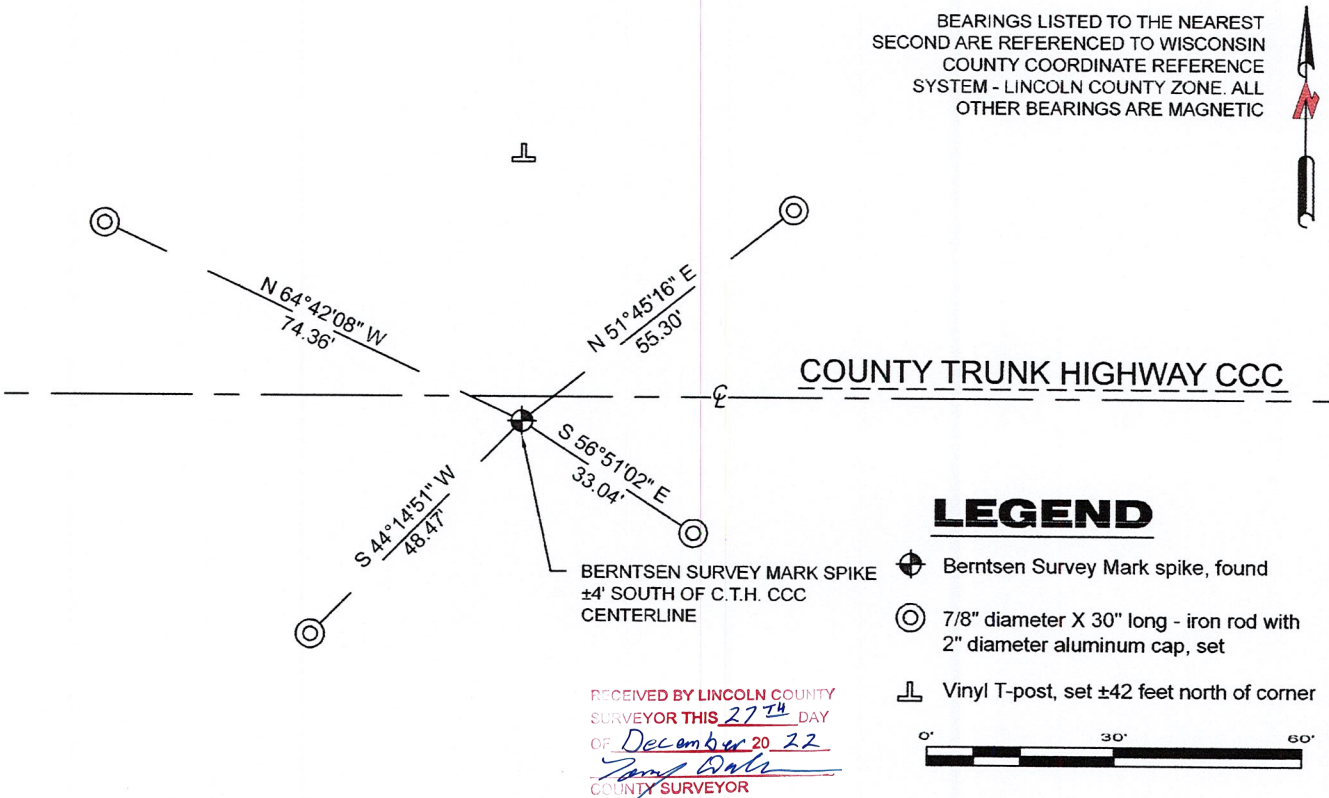
December 4, 2004 - Surveyor 1390 - David E. Tlusty - indicates this position as "found Berntsen SN-1Nail" on Lincoln County map S203B.

July 16, 2008 - Surveyor 2561 - Brendon J. Boulanger - indicates this position as "found cotton spindle" on Lincoln County map S268B.

August 25, 2018 - Surveyor 1390 - David E. Tlusty - indicates this position as "found Berntsen SN-1Nail" on Lincoln County map S656A.

September 27, 2022 - While performing the 2022 Lincoln County PLSS Corner Remonumentation and GPS Services project, I found a Berntsen Survey Mark spike near the computed position provided by Lincoln County. The monument is ±4 feet south of the of C.T.H. CCC centerline, and at road grade. I established 4 new reference monuments as shown below.

A-E 7.08(3)(c)(d) Plan view of corner with references to at least 4 witness monuments.



A-E 7.08(3)(e) 1854 Surveyor set a post, 2004, 2008, 2018 Surveyors found a spike. I found a Berntsen Survey Mark spike.

A-E 7.08(3)(f) I accept this monument as a FOUND PERPETUATED LOCATION of the corner.

A-E 7.08(3)(g)(h) This corner was not determined through lost-corner-proportionate methods.

A-E 7.08(3)(i) I, Jeffrey L. DeMuth, Professional Land Surveyor No. S-2656, hereby certify that the corner location on this record was determined by the Lincoln County Surveyor, and the monuments found or set as shown hereon were measured by me or under my direction and control, and that this U.S. Public Land Survey Monument Record is correct and complete to the best of my knowledge, and belief.

SIGNATURE *Jeffrey L. DeMuth* DATE December 14, 2022



17-23

REPORT

2022-Lincoln County PLSS Corner Remonumentation and GPS Services

Wisconsin Corner Point Identification Number: 43308130020
Surveyor: Jeffrey L. DeMuth – S2656
Corner monument: Found Berntsen “Survey Mark” steel spike.

Field Book: Cardinal North – Lincoln Co. Remon. – 2022-00
Page: 49

Horizontal Datum: WisCRS – Lincoln County Zone – NAD83(2011)

Date / time of initial measurement:
September 27, 2022 - Start 15:42:38 CDT – End 15:57:59 CDT

Reference monuments:
4 – Set - 7/8” diameter X 30” long iron rods with 2” diameter Lincoln Co. aluminum cap.

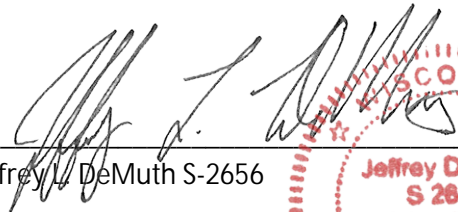
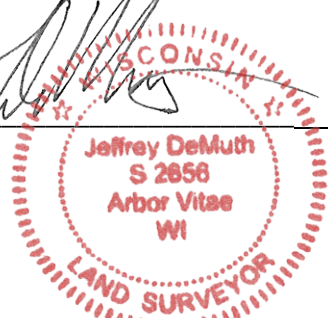
Coordinate Table

	County Provided	2022 Measurement	Difference
North	179465.016	179465.011	0.01
East	457745.832	457745.829	0.00

Observed coordinates match with existing coordinates within reason.
Request Data Log for more information.

Additional Notes:

Corner falls $\pm 4'$ south of CTH CCC centerline. There is a N-S tree line heading north and south from the corner.


 Jeffrey L. DeMuth S-2656
 
 October 7, 2022
 Date

43308130020_Mon-N



43308130020_North



43308130020_West



43308130020_South



43308130020_East

