

U.S. PUBLIC LAND SURVEY MONUMENT RECORD

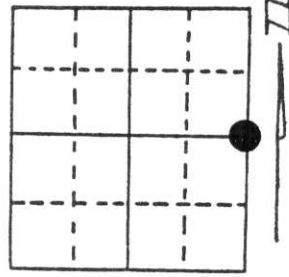
Note: This form is intended and designed to fulfill all requirements of Wisconsin Administrative Code, Chapter A-E 5.02, U.S. Public Land Survey Monument Record (3) (a) (b) (c) (d) (e) (f) (g) (h) (i). An additional sheet may be added if necessary to conform with said requirements.

(a) Corner location: Township 33 North

Range 8 East

Town/City/Village RUSSELL

County LINCOLN



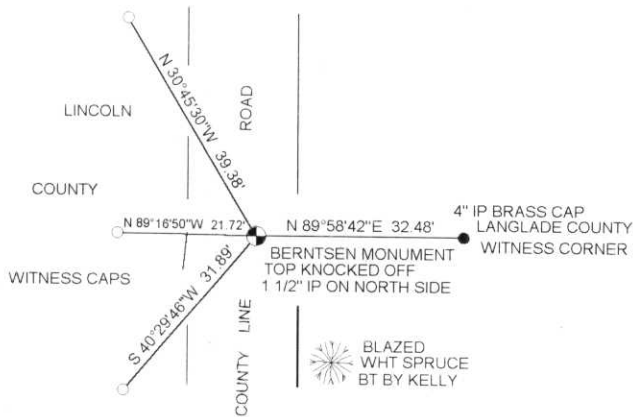
Section 12

(b) (f) (g) (h) Description of monument found at this corner and if it was accepted, state all evidence (material, testimonial, occupational, plats, records, other monuments) used as a basis for accepting. If not accepted or if nothing was found, state evidence used as basis for establishing location. If reestablished through lost corner proportionate methods, indicate all monuments, distances and directions used to establish.

NOVEMBER 1975 BILL KELLY RECOVERED A 4" IP BRASS CAP WITNESS CORNER AND EXCAVATED A STONE IN THE CENTER OF THE ROAD. HE SET A BERNTSEN MONUMENT OVER THE STONE AND ESTABLISHED TWO BT'S.

I FOUND A BERNTSEN MONUMENT ON THE ROAD SURFACE WITH THE TOP KNOCKED OFF IN ADDITION A 4" IP BRASS CAP WITNESS CORNER TO THE EAST AND ONE OF KELLY'S BT'S, A BLAZES WHITE SPRUCE TO THE SOUTHEAST.

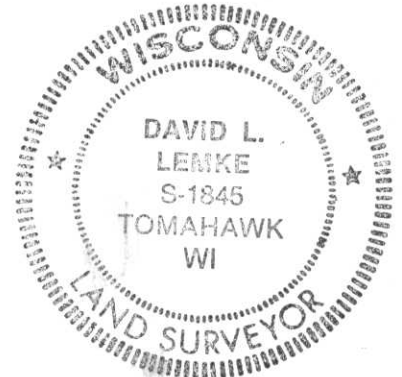
(c) (d) (e) Plan view of corner with ties to at least 4 witness monuments. If in disagreement with previously established corner, show the distances between the two corners and also indicate the ties to the disputed corner.



RECEIVED AT LINCOLN COUNTY
 COURTHOUSE THIS 8th DAY
 OF June 19 96
 TAX DESCRIPTION OFFICE

(i) I, DAVID L. LEMKE
 (type or print name) certify that the corner location on this record was determined by me or under my direction and control and that this U.S. Public Land Survey Monument Record is correct and complete to the best of my knowledge and belief.

David L. Lemke 6.6.96
 Signature Date



Index No. 6-25

CERTIFIED LAND CORNER RESTORATION

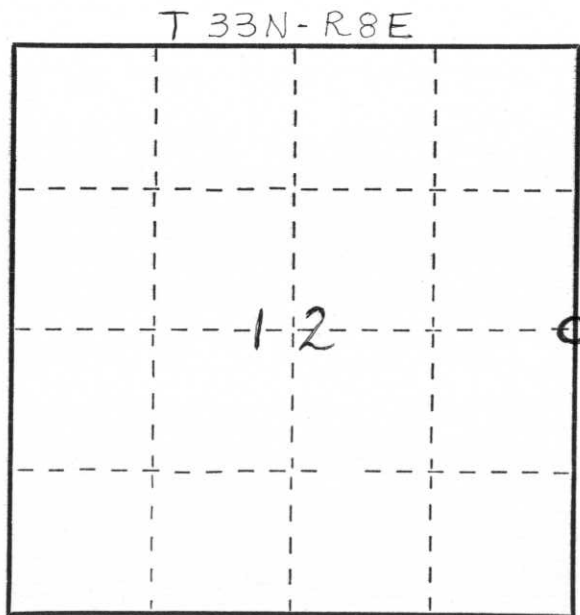
Index No. G-25

State of Wisconsin }
County of LINCOLN } ss.

I WILLIAM F. KELLY, do hereby certify that on the 25TH day of NOVEMBER, 1975, I found evidence of the 1/4 SECT corner of SECTIONS 12 & 7 Township 33, North, Range 8E & 9E, Fourth, Principal Meridian, as described hereon; and that from this evidence I established a new monument and accessories as described hereon to perpetuate the original location of this corner.

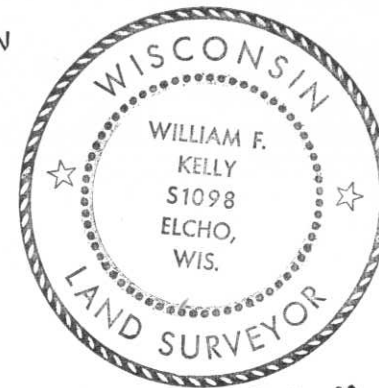
Resident witnesses:

A. SCHAUFELBERGER



○ = Corner monument restored.

History of original corner establishment:

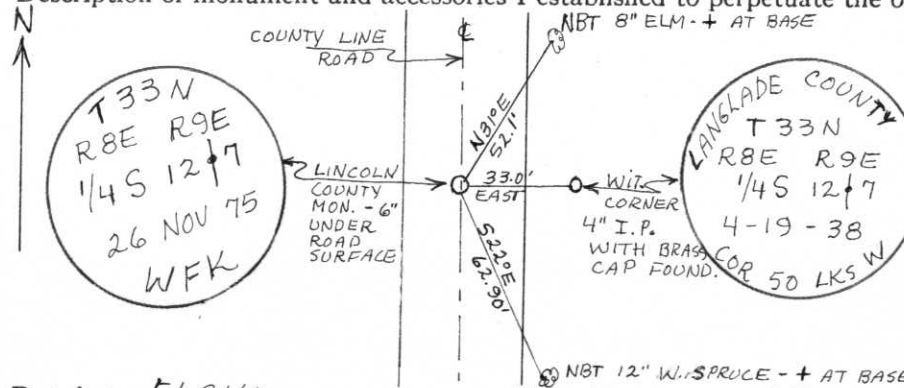


William F. Kelly

Description of corner evidence found:

LOCATED WITNESS CORNER TO 1/4 SECT. CORNER 12 & 7 T. 33N.-R. 8E. and 9E. RESIDENT WITNESS IDENTIFIED WITNESS CORNER. EXCAVATED ROAD AND FOUND FIELD STONE WITH CROSS. STONE TILTED ON AN ANGLE OF 45°

Description of monument and accessories I established to perpetuate the original location of this corner.



SET NEW MONUMENT FROM WITNESS CORNER DISTANCE AND LEFT STONE IN ITS TILTED POSITION.

Dated at ELCHO, Wis., this 25TH day of NOVEMBER, 1975

Signature William F. Kelly Title REGISTERED LAND SURVEYOR Registration No. 51098
(County Surveyor, Registered Land Surveyor, or other duly authorized official)

Office of Register of Deeds, County of _____, I hereby certify that the within instrument was filed in this office for record on the _____ day of _____, 19____ at _____ o'clock _____ M.

(Register of Deeds)

By _____ Deputy