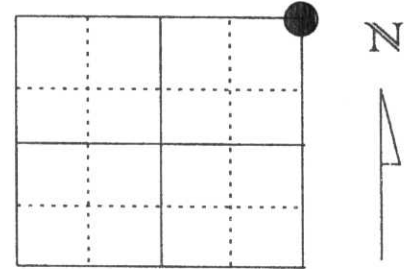


U.S. PUBLIC LAND SURVEY MONUMENT RECORD

Note: This form is intended and designed to fulfill all requirements of Wisconsin Administrative Code, Chapter A-E 5.02, U.S. Public Land Survey Monument Record (3) (a) (b) (c) (d) (e) (f) (g) (h) (l). An additional sheet may be added if necessary to conform with said requirements.

(a) Corner location: Township 33 North
 Range 8 East
 Town/City/Village TN. RUSSELL
 County Lincoln



Section 17

(b) (f) (g) (h) Description of monument found at this corner and if it was accepted, state all evidence (material, testimonial, occupational, plats, records, other monuments) used as a basis for accepting. If not accepted or if nothing was found, state evidence used as basis for establishing location. If reestablished through lost corner proportionate methods, indicate all monuments, distances and directions used to establish.

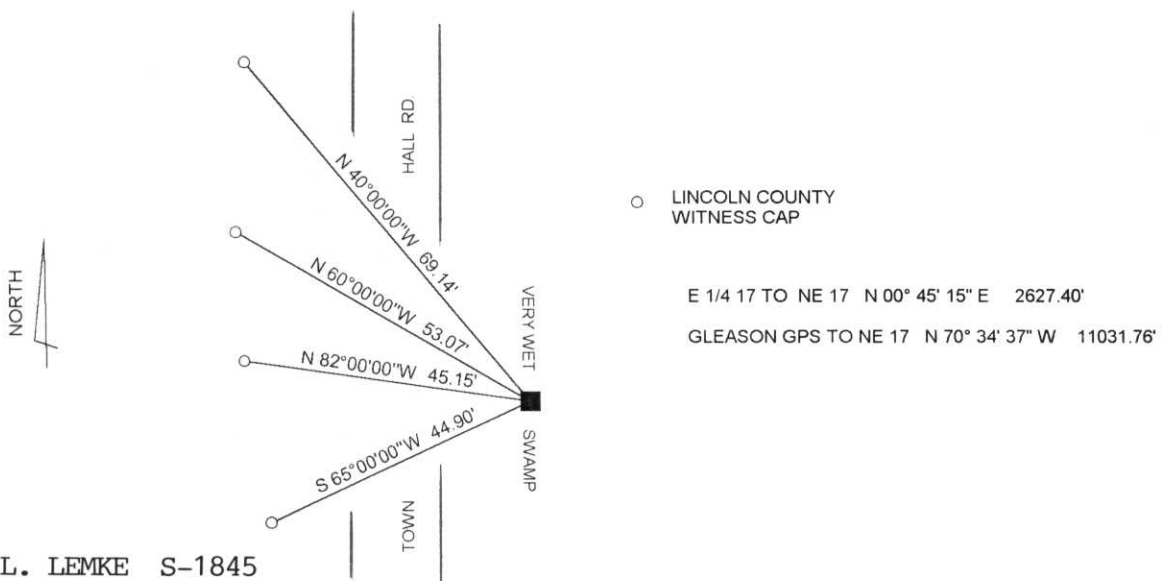
AUGUST 1981 SHERIDAN SCHWARK RECOVERED A GRANITE STONE AND ESTABLISHED 3 WITNESS POINTS TO THE CORNER POSITION.

JUNE 1998 I FOUND THE STONE AND TWO OF THE WITNESS POINTS ESTABLISHED BY SHERIDAN. I SET 4 NEW LINCOLN COUNTY WITNESS CAPS TO THE CORNER POSITION.

RECEIVED AT LINCOLN COUNTY
 COURTHOUSE THIS 2nd DAY
 OF July 1998
Pat Friebe
 TAX DESCRIPTION OFFICE



(c) (d) (e) Plan view of corner with ties to at least 4 witness monuments. If in disagreement with previously established corner, show the distances between the two corners and also indicate the ties to the disputed corner.



(l) I, DAVID L. LEMKE S-1845
 (type or print name) certify that the corner location on this record was determined by me or under my direction and control and that this U.S. Public Land Survey Monument Record is correct and complete to the best of my knowledge and belief.

David L. Lemke JUL. 02 1998
 Signature Date

Index No. I-9

CERTIFIED LAND CORNER RESTORATION

Index No. I-9

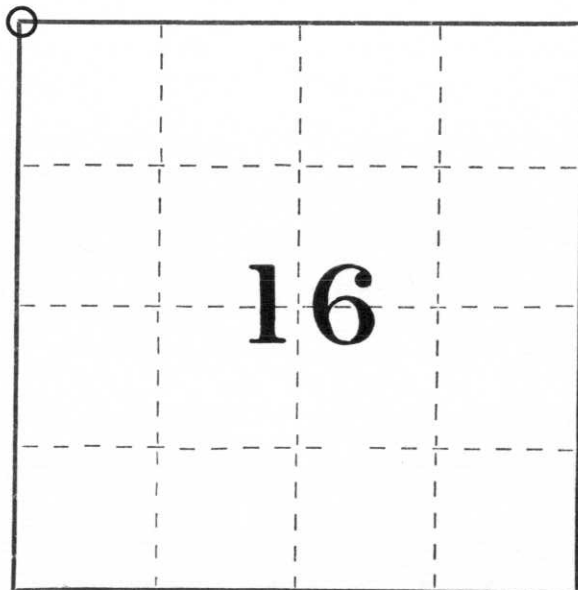
State of Wisconsin }
County of Lincoln } ss.

History of original corner establishment:
Wood post set by original government surveyor

I Sheridan D. Schwark, do hereby certify that on the 26th day of November, 1980, I found evidence of the Northwest corner corner of Section 16 Township 33, North, Range 8 East, Fourth, Principal Meridian, as described hereon; and that from this evidence I established a new monument and accessories as described hereon to perpetuate the original location of this corner.

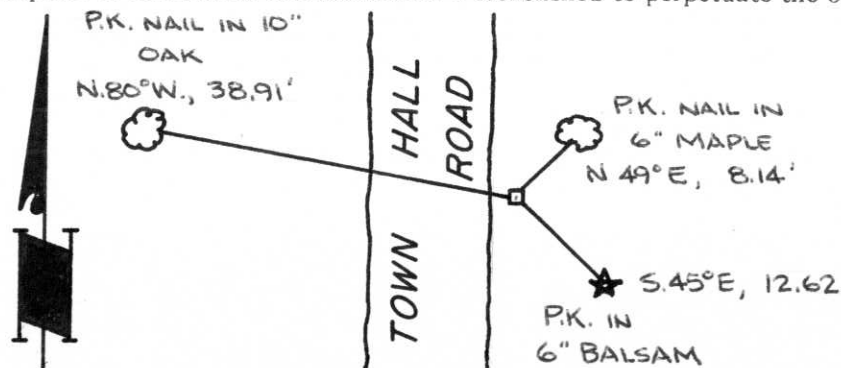
Description of corner evidence found:
We found a 6" x 6" granite monument up approximately 1'.
We set the references as shown below.

Resident witnesses:



○ = Corner monument restored.

Description of monument and accessories I established to perpetuate the original location of this corner.



Dated at Merrill, Wis., this 18th day of August, 1981.

Signature Sheridan D. Schwark Title Registered Land Surveyor Registration No. S-1205
(County Surveyor, Registered Land Surveyor, or other duly authorized official)

Office of Register of Deeds, County of _____, I hereby certify that the within instrument was filed in this office for record on the _____ day of _____, 19____ at _____ o'clock _____ M.

(Register of Deeds)

By _____ Deputy