

# Attachment to Tie Sheet E-05, T33N, R8E

43308060000

I visited the corner on 10/12/2023 to verify the corner and reference tie monumentation. I found a Granite Monument, up 12", and all 4 of David Renaud's ties(12/23/2004). All ties check well.

*Anthony R. Dallman 02/16/24*

Anthony R. Dallman, PLS-2405

Lincoln County Surveyor



43308060000\_Mon-N



43308060000\_North



43308060000\_West



43308060000\_South



43308060000\_East



PLEASE DO NOT  
REMOVE  
**MARK**

# U.S. PUBLIC LAND SURVEY MONUMENT RECORD

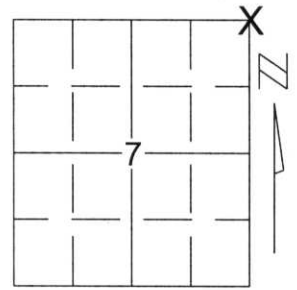
Note: This form is intended and designed to fulfill all requirements of Wisconsin Administrative Code, Chapter A-E 5.02, U.S. Public Land Survey Monument Record (3)(a)(b)(c)(d)(e)(f)(g)(h)(i). An additional sheet may be added if necessary to conform with said requirements.

(a) Corner location: Township 33 North

Range 8 East

Town/City/Village RUSSELL

County LINCOLN



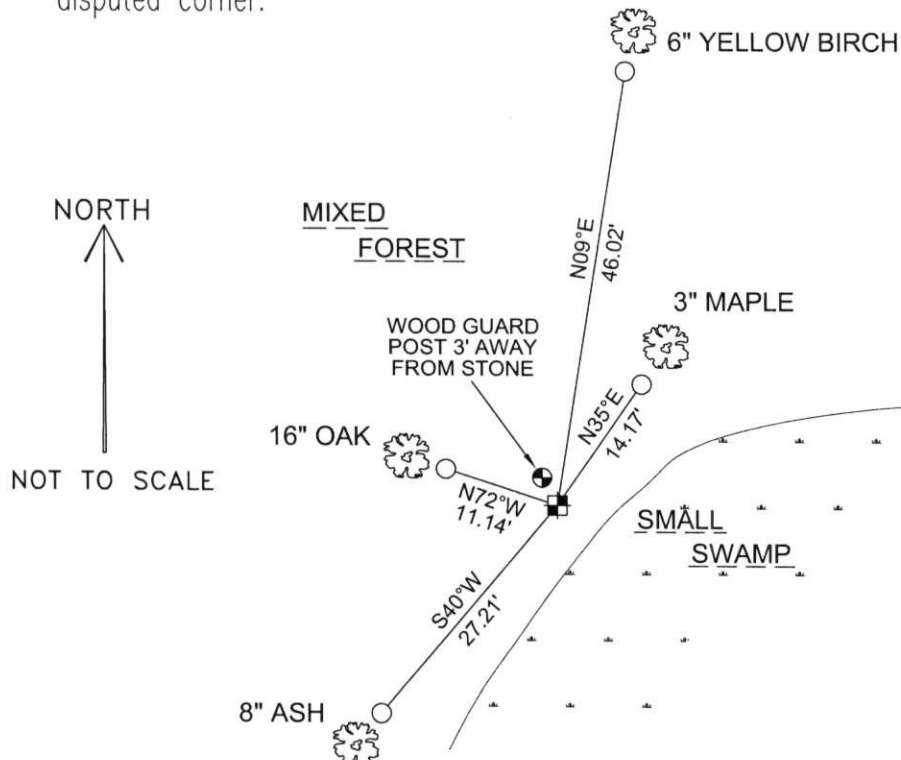
Section 7

(b)(f)(g)(h) Description of monument found at this corner and if it was accepted, state all evidence (material, testimonial, occupational, plats, records, other monuments) used as a basis for accepting. If not accepted or if nothing was found, state evidence used as basis for establishing location. If reestablished through lost corner proportionate methods, indicate all monuments, distances and directions used to establish.

SEARCHED FOR CORNER. FOUND A 6" x 6" GRANITE STONE WITH 2 TIES FROM 1979 GENISOT SURVEY. ALSO FOUND BLUE BLAZE LINE RUNNING NORTH AND WEST OF STONE. ACCEPTED STONE AS CORNER AND TIED OUT TO PERPETUATE CORNER LOCATION.

RECEIVED BY LINCOLN COUNTY  
SURVEYOR THIS 11<sup>TH</sup> DAY  
OF January 20 05  
*Tommy Dahl*  
COUNTY SURVEYOR

(c)(d)(e) Plan view of corner with ties to at least 4 witness monuments. If in disagreement with previously established corner, show the distances between the two corners and also indicate the ties to the disputed corner.



COORDINATES ARE REFERENCED TO THE LINCOLN COUNTY COORDINATE SYSTEM AS DEVELOPED BY THE WISCONSIN DEPARTMENT OF TRANSPORTATION AND WERE DETERMINED BY GPS OBSERVATIONS ON CONTROL POINTS AS SUPPLIED BY LINCOLN COUNTY.

BEARINGS ARE REFERENCED TO MAGNETIC NORTH.

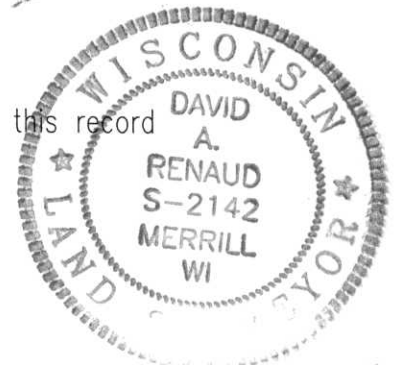
N - 190342.955  
E - 434000.481

○ - SET 3/4" x 30" REBAR W/ ALUM CAP AT BASE OF BEARING TREE

■ - NORTHEAST CORNER FOUND 6" x 6" GRANITE STONE

(i) I, David A. Renaud, RLS S-2142, certify that the corner location on this record was determined by me or under my direction and control and that this U.S. Public Land Survey Monument Record is correct and complete to the best of my knowledge and belief.

David Renaud 12-23-04  
Signature S-2142 Date



Index No. .... 73383

E-5

