

U.S. PUBLIC LAND SURVEY MONUMENT RECORD

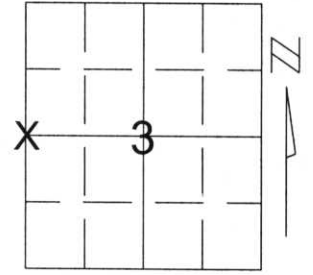
Note: This form is intended and designed to fulfill all requirements of Wisconsin Administrative Code, Chapter A-E 5.02, U.S. Public Land Survey Monument Record (3)(a)(b)(c)(d)(e)(f)(g)(h)(i). An additional sheet may be added if necessary to conform with said requirements.

(a) Corner location: Township 33 North

Range 8 East

Town/City/Village RUSSELL

County LINCOLN



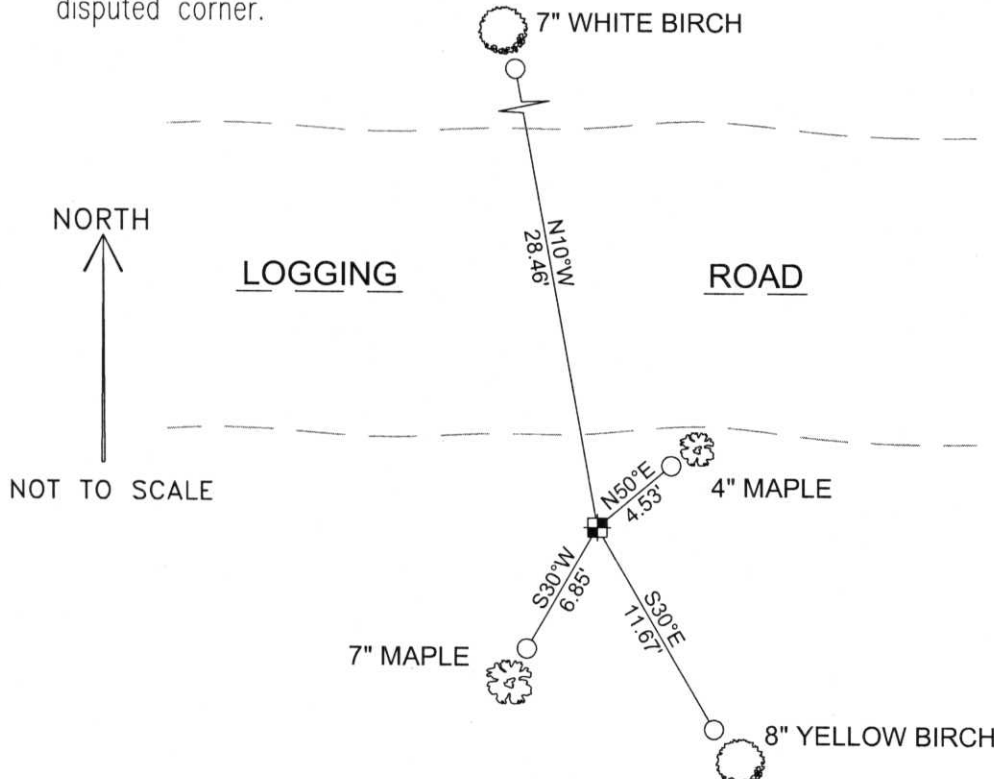
Section 3

(b)(f)(g)(h) Description of monument found at this corner and if it was accepted, state all evidence (material, testimonial, occupational, plats, records, other monuments) used as a basis for accepting. If not accepted or if nothing was found, state evidence used as basis for establishing location. If reestablished through lost corner proportionate methods, indicate all monuments, distances and directions used to establish.

SEARCHED FOR CORNER AND FOUND A 6" x 6" GRANITE STONE 10 FEET SOUTH OF A NEW LOGGING ROAD. STONE HAD TWO BLAZE TREES FOR TIES, USED EXISTING BLAZE TREES AND SET TIES TO PERPETUATE CORNER LOCATION.

RECEIVED BY LINCOLN COUNTY SURVEYOR THIS 11TH DAY OF January 20 05
Tony Dahl
 COUNTY SURVEYOR

(c)(d)(e) Plan view of corner with ties to at least 4 witness monuments. If in disagreement with previously established corner, show the distances between the two corners and also indicate the ties to the disputed corner.



COORDINATES ARE REFERENCED TO THE LINCOLN COUNTY COORDINATE SYSTEM AS DEVELOPED BY THE WISCONSIN DEPARTMENT OF TRANSPORTATION AND WERE DETERMINED BY GPS OBSERVATIONS ON CONTROL POINTS AS SUPPLIED BY LINCOLN COUNTY.

BEARINGS ARE REFERENCED TO MAGNETIC NORTH.

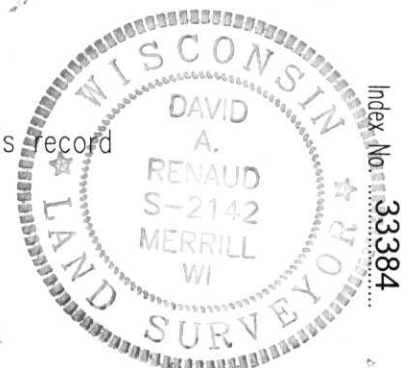
N - 192709.024
 E - 444601.518

○ - SET 3/4" x 30" REBAR W/ ALUM CAP AT BASE OF BEARING TREE

■ - WEST 1/4 CORNER FOUND 6" x 6" GRANITE STONE

(i) I, David A. Renaud, RLS S-2142, certify that the corner location on this record was determined by me or under my direction and control and that this U.S. Public Land Survey Monument Record is correct and complete to the best of my knowledge and belief.

David Renaud 12-23-04
 Signature S-2142 Date



C-13

333 R4 WY RANGE SP23

