

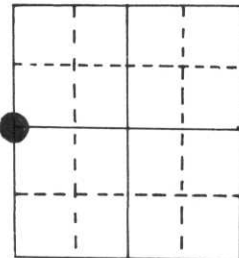
U.S. PUBLIC LAND SURVEY MONUMENT RECORD

Note: This form is intended and designed to fulfill all requirements of Wisconsin Administrative Code, Chapter A-E 5.02, U.S. Public Land Survey Monument Record (3) (a) (b) (c) (d) (e) (f) (g) (h) (i). An additional sheet may be added if necessary to conform with said requirements.

(a) Corner location: Township 33 North
 Range 8 East/~~West~~

Town/City/Village Russell

County Lincoln



Section 2

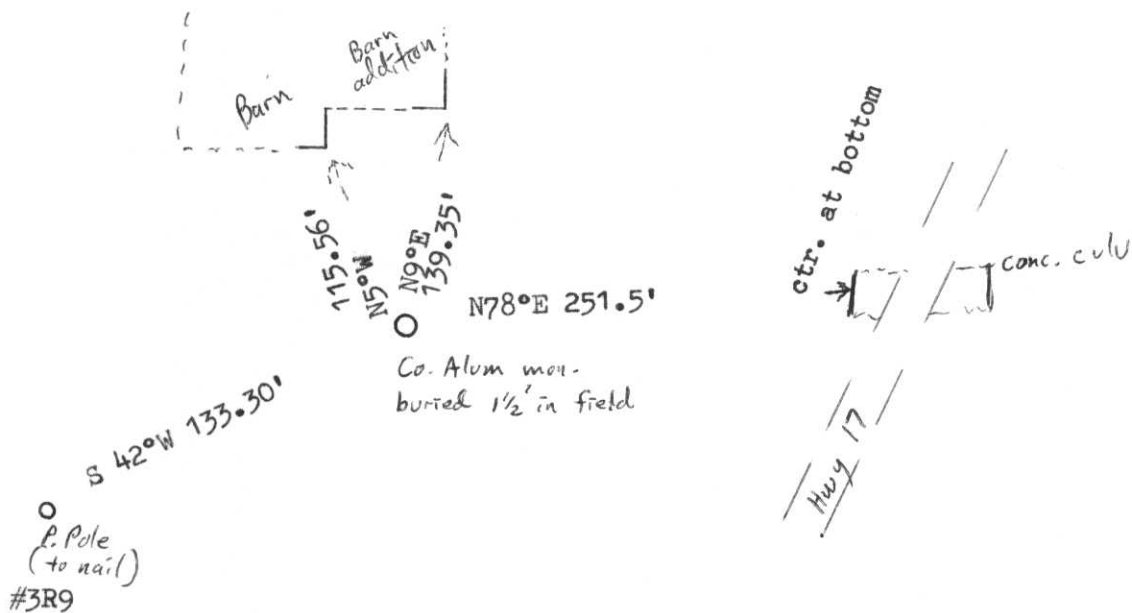
(b) (f) (g) (h) Description of monument found at this corner and if it was accepted, state all evidence (material, testimonial, occupational, plats, records, other monuments) used as a basis for accepting. If not accepted or if nothing was found, state evidence used as basis for establishing location. If reestablished through lost corner proportionate methods, indicate all monuments, distances and directions used to establish.

Original by Jackson L. Prentice, 1854, BW 10" N65°E 12 lks., Heml N83°W 27 lks.

According to Adam Miller (land owner) the corner stone was in the old Hwy 17 pavement, as it stuck up a little and the snow plow would hit it. The area now is an open field. Miller located the corner spot by lining up the old road bed to the south with an extended line from his fence that had been set before off the corner in the road. This location checks with the D.O.T. highway plan location of 1959, and checks reasonably well to R. Ilg's map.

I set an aluminum Co. berntsen monument at that location. (buried 12")

(c) (d) (e) Plan view of corner with ties to at least 4 witness monuments. If in disagreement with previously established corner, show the distances between the two corners and also indicate the ties to the disputed corner.



(i) I, Marvin E. Seymour
 (type or print name) certify that the corner location on this record was determined by me or under my direction and control and that this U.S. Public Land Survey Monument Record is correct and complete to the best of my knowledge and belief.

Marvin E. Seymour Signature
Oct 7, 1988 Date



C-17